



243

COBALT BOATS

3SERIES

COBALT 243



This boat has been proven to induce over-zealous responses from its owners. Everyone take a deep breath as we proceed.

Even lifelong bowrider folks are choosing the 243, having seen its dragsteresque acceleration, its Indy-car handling at top speeds, especially in the company of Cobalt hallmarks of value, in features both standard and optional. No sacrifice here of boorah performance in trade neither for a large and quite spectacular cabin, nor for a head compartment whose entry door is a masterpiece of double-duty engineering. The 243 uses its spaciousness to full effect, most especially in ski storage and in cockpit appliances where a sink console highlights an interior among Cobalt's most sophisticated ever. The cabin, splendid in its appointments, offers a full eight feet of bedtime berth, an oversized deck hatch and opening portal to bring in the sea air.

Full speed ahead then, weekenders and confirmed cuddy owners. Full speed ahead.





243

3 SERIES

COBALT 243



Specifications

Length Overall w/o Swim Platform	23' 11"	7.29 m
Length Overall w/ Swim Platform	25' 11"	7.90 m
Beam	8' 6"	2.59 m
Interior Cockpit Width	87"	2.20 m
Deadrise at Transom	21°	21°
Fuel Capacity	50 gal.	189 L
Freshwater Capacity	10 gal.	38 L
Bridge Clearance w/o Bimini	5' 3"	1.60 m
Bridge Clearance w/Arch or Tower	8' 2"	2.49 m
Draft Drive Up	21"	.53 m
Draft Drive Down	37"	.94 m
Dry Weight	4600 lbs.	2087 m
Boat Certified Capacity	13 persons	13 persons
Boat Certified Capacity w/gear	2250 lbs.	1021 kg

MerCruiser Sterndrive Power

350 Mag MPI ECT B3	300 php	224 PkW
377 Mag MPI ECT B3	320 php	239 PkW
8.2 Mag ECT B3	380 php	283 PkW
8.2 Mag HO ECT B3	430 php	321 PkW

Volvo Penta Sterndrive Power

V8-300C DP	300 php	224 PkW
V8-320C DP	320 php	239 PkW
V8-380C DP	380 php	283 PkW

ENGINE OPTIONS

Anti-Corrosion System
 DTS (Merc)
 EVC (Volvo)
 Ocean-X (Volvo)
 Seacore (Merc)



STANDARD EQUIPMENT

Dash and Instrumentation

Accessory Power Plug - 12 Volt
Aluminum Dash Panels
Black Leather/SS Steering Wheel
Composite Helm Eyebrow,
Custom Stitching
Depth & Water/Air Temp Gauge Pkg.
Hour Meter
Stainless Steel Switches

Stereo

AM-FM, Single CD Stereo w/6 Speakers
iPod/MP3 Port
Stereo Remote, Dashh

Exterior

Anchor Locker
Bow Scuff Plate, Stainless Steel
Extended Running Surface
Graphics, Molded-In Gelcoat
Midship Cleats
Portal Lights-2 (fwd. cabin)
Ski Pylon - Stainless Steel
SS Tubular Platform Perimeter Rail
Stainless Steel Engine Vents
Stainless Top Trim Windshield
Swim Platform, Extended w/Ladder

Interior

Aft Sunpad w/Adjustable Backrest
Aft Sunpad w/Walk-Thru Transom
Aft Walk-Thru Carpet
Cabin/Head Entry Doors (sliding)
Carpet, 40 oz., Snap-In w/Neoprene Back
Enclosed Head w/Porta Potti
Removable Cockpit Carpet
Seating Varadense Comfort
Seating, Dual Flip-Lip Buckets
Seating, Helm Flip-Up

Structure / Safety / Performance

10/5/3 Year Warranty Protection
Battery Switch, Single
Circuit Breaker Protected Elec System
Composite Floor
Composite Transom
Fiberglass Cockpit Liner
Fiberglass Stringer System
Fire Extinguisher, Manual
Ignition Safety Switch

Kevlar Reinforced Hull
Stainless Steel Windshield Braces
Through Prop Exhaust

OPTIONAL EQUIPMENT

Canvas

Bimini Enclosure Package
Bimini Top
Cockpit Tonneau Cover
Mooring Cover

Dash and Instrumentation

GPS w/Weather, Garmin 640, w/maps
GPS, Garmin 640, w/maps
Windshield Wiper-Starboard
Wood Dash/Trim Pkg., Oil Rubbed

Stereo

Cabin Entertainment Package (TV/DVD)
Premium Sound System w/Transom Remote
Satellite Radio System
Speakers (1 pr.), Tower
Stereo Remote, Transom
Tower Speakers (req. Prem.Sound, Dual Batt.)

Exterior

Arch, Aluminum, Fwd. Folding w/Bimini
COBALT Oval Logo, Recessed
Docking Lights-Stainless Steel
Fender Clips w/Line (4)
Flagpole w/Flag
Flip-Down Swim Step w/Ladder
Flip-Down Swim Step w/o Ladder
Foredeck Sunpad
Motorbox Actuator
Portal Lights-2 (1-head, 1-aft cabin)
Sof-Trac Mat (std swim platform)
Sof-Trac Mat (swim platform w/step)
Stainless Steel Bow Rails 10"
Stainless Steel Tower w/Bimini Top
Swim Platform Transom Lighting
Transom Shower
Transom Tilt Switch
Underwater Lighting
Wakeboard Racks w/Swivel, requires tower

Interior

Aft Walk-Thru Gate
Air Compressor w/Holder
Cabin Table/Filler Cushion Pkg.
Carpet, Cesera (Sand & Terra)

Chiller Plate (cockpit)
Cockpit Heater
Del Mar Sport Seating
Dinette Table w/cockpit receptacle
Floor Covering, Sea Grass (Sand & Terra)
Foredeck Step "Euro Style"
Head Sink/Storage Console
Head w/Electric Porcelain Toilet
Head w/Electric Porcelain, Macerator
Pump Out Head
Pump Out Head w/Macerator
Remote Courtesy Lights w/Key fob
Sink Console, Cockpit
Stainless Steel Foot Tread (helm only)
Throw Pillows, cockpit

Structure / Safety / Performance

Battery Switch, Dual w/VSR
Battery Tender/Charger, 110v
Battery Tender/Charger, 220v
Captain's Call Exhaust
Captain's Call Plus (w/Mufflers)
CE Requirements w/Automatic
Fire Extinguisher
Fire Extinguisher
Cruise Control (Perfect Pass) w/GPS
Fire Extinguisher, Automatic System
Tool Kit
Trim Tabs
Windlass w/Line, Chain & Anchor



COBALT BOATS

Cobalt makes boat after boat so perfectly suited to its owners that, once aboard, there is no place in the world they'd rather be. Here are boats for people who have worked hard, who have accomplished, who are now ready to enjoy to the fullest the success that their efforts have brought them.

So welcome aboard, achievers, in your thoughtful appreciation of timeless good taste and inspired functionality. You remember that Cobalt means interiors that anticipate your needs for space and its comfortable usage at cruise and at anchor alike. You expect electronic entertainment systems that turn coves into concert halls. You understand Cobalt ease and accommodation and accessibility and comfort and safety astern, where so many of your truly storied festivities take place, with Cobalt innovation so sweeping that patents are called for.

The technicalities: honeycomb composite construction; completely hand-laid hulls, reinforced with essentially indestructible Kevlar®; a proprietary barrier coat for improved cosmetics and blister resistance; taller hull sides for a stable, dry ride in rough water; over-sized, over-strong, stainless-steel hardware; cushioned lids with knuckled hinges for easy, open access to storage compartments large and larger still; graphics deep, untouched in the gelcoat. Herewith, the ingredients of thoroughly enjoyable use of a boat for the generations.

You know that the little details of a boat's construction do their work quietly, contributing to big enjoyment when no one but you need notice the integrated bow eye with scuff plate, the stainless-steel ski tow, the structural genius of the bimini top, the quick-release fender system, the flip-lip seat bolster at the helm, or the dozens of Cobalt firsts which serve as a beacon for an entire industry.

COBALT BOATS

Cobalt is approaching fifty years of building boats in the classic tradition. 50 years of excellence. 50 years of creating quality. For 5 decades we passionately pursue quality as not just a sometimes thing, we know it as an everyday thing. We're not interested in mass producing; we are boat and dream builders. It's a subtle play on words, but a major differentiation. It defines the difference between acceptable and excellence. Machines can produce. They can produce just fine. But only a knowledgeable, caring, engaged human being can build: there the throwback, there the wisdom which is so instilled in our team. At Cobalt we understand that opportunities for fundamental changes of attitude are pretty much what you make of them. And so, we've built boats that speak to the heart of things, boats capable of producing sounds not entirely meant to be heard: the escaping ooohs and inescapable wows of sudden movement. A Cobalt coming quickly on plane can lead to a welcome, unasked amnesia, the cares of a workaday world gone in a nanosecond of spray, land-locked worries forgotten in the laughing thump to the chest that defines Cobalt performance.

The beguiling begins in the basics, in fundamentals of design and construction that have defined Cobalt for almost fifty years, these boats the product of ever-changing technical innovation and unchanging allegiance to the personal integrity of our boat-builders, their individual craftsmanship, their day-to-day decisions about when a boat is good enough to be a Cobalt.

So we persist in the daily pursuit of the unreachable -- the design, manufacture, and ongoing support of the perfect runabout, the ideal performance cruiser. With our dealers worldwide, we give our minds and hearts to the winning of the hearts and minds of our customers, creating time and again a trust that feels just like family.



Finely Detailed Interiors

- Vara-Dense Seat Construction
- Double-Needle Interior Details
- 32oz. Vinyl with Protective Barrier Coat
- Multiple Densities of Antimicrobial Foam
- StarBoard/Kelron Wood-Free Seat Bases
- Double-Knuckle Hinges
- Flip-Lip Seat Bolster
- Multi-Position Convertible Seat Backs

Interior Versatility and Comfort

- Easily Convertible
- Ergonomic Comfort
- High Freeboard
- Deep Bow and Cockpit Seating
- 40 oz. Snap In/Out Carpet with Action Backing
- Exacting fit and seal of motorbox for the quietest cockpit

Luxury is Not Made of Plastic

- Aluminum Dash Panel
- Solid Fiberglass Helm Station
- Digital Instrumentation
- GPS Offering on All Models
- Stainless Ignition Switch
- Stainless Steel Switches
- Circuit Breaker Protection
- Dual Grounding Busses
- Waterproof Electrical Connectors



Waterproof Sealed Connectors



Illuminated Switch Panels



Double-Needle Stitching



Engine Hatch Seal for a Quiet Ride



Wood-Free Seat Construction

Real World Solutions (a.k.a. Industry Firsts)

- Quick-Release Fender Clips
- Stainless Steel Turn-Buckle Bimini Stanchions
- Stainless Steel Bow Scuff Plates
- Stainless Steel Windshield Door Latch
- Flush Mount Removable Ski Tow
-

The Cobalt Swim Platform

- Easy Entry/Exit Water Access
- Protection From the Propeller
- Stainless Steel Bumper Rail
- Cobalt Exclusive Flip-Down Swim Step
- A-Series Hydraulic Deployable Swim Platform



Turn-Buckle Bimini Stanchions



Stainless Steel Bow Scuff Plate



Quick-Release Fender Clips



Stainless Steel Windshield Latch



Cobalt Exclusive Swim Step



A Series Hydraulic Swim Platform

Superior Construction

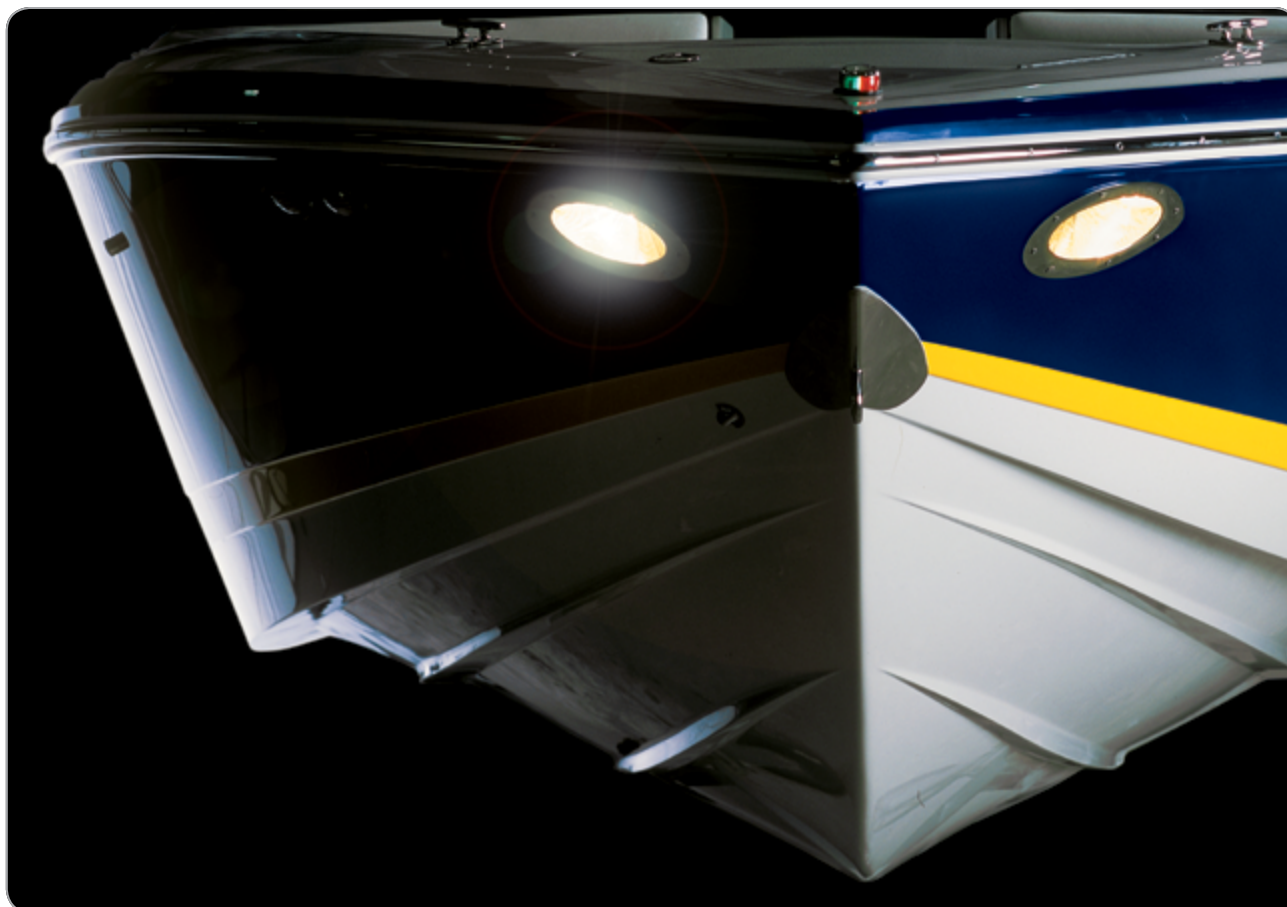
- Gelcoat Graphics
- Barrier Coat - A Cobalt Exclusive
- 100% Hand-Laid Hulls
- Buffback Gelcoat to Resist Fading
- Tapped Aluminum Backing Plates on All Hardware
- Composite Transom
- Nida-Core Floor Construction
- Fiberglass Stringer System
- Gas-Assist Struts on All Hatch Covers
- Extensive Electropolished Stainless Steel Hardware
- Kevlar Reinforced Hull Construction

Hulls Designed for Smooth and Soft Ride

- Progressive Deadrise Hull Design
- Smooth, Dry, Award Winning Ride
- Extended Running Surface
- Reverse Chines for Ultimate Control

Unrivalled Handling

- Quick On-Plane with Minimal Bow Rise
- Stay On-Plane at Low Speed
- Cornering "On Rails"
- High Speed Stability



Electropolished Advantages



Extended Running Surface



Composite Floor Construction



Bonded Fiberglass Stringers



Kevlar Reinforced Hull

10-5-3 Transferable Warranty

Ten Year Protection

Hull & Deck Structure: Floors, stringers, bulkheads, motor mounts, transom, all deck and hull joints

Five Year Protection

Engine: Internally lubricated parts

Stern Drive: Internally lubricated parts in upper and lower housings, stern drive control system: power steering pump, power steering cooler, TVM module, TVM cylinder, joystick

Intermediate Housing: Shaft, U-joints, bearings

Steering: Helm, rack, cable, pump, seals and gaskets

Power Trim: Pump, cylinders, solenoids, switches, seals and gaskets

Electrical: Alternator, voltage regulator, electronic ignition module, ignition coil, starter motor, wiper motor, engine wiring harness, courtesy lights, docking lights, battery switch, battery isolator, bow light, horn, anchor light, spotlight, blower motor, electric hatch motor and switch

Fuel Delivery: Fuel injection control units and injectors, fuel injection pump, fuel injector rails, fuel delivery pump, flame arrestor

Controls: Control box, neutral safety switch, cables

Instrumentation: Tachometer, oil pressure, volt gauge, hour meter, speedometer, engine temperature, trim gauge, fuel gauge, air/water temperature

Accessories: Air conditioner, cockpit heater, engine battery charger, compass, depth finder, transducer and wiring harness, generator, refrigerator, galley sink and faucet, shore power, stainless steel deck railings, stainless steel rubrail, stainless steel hardware, stereo/CD player, amplifier(1), dash stereo remote, trim tabs, freshwater pump, toilet, stove, microwave, windlass

Electronics: Radar, GPS, VHF radio

Non-Defect Failures: Overheating, pre-ignition, detonation, scored pistons, scored cylinders, tuliped valves, carbonized rings, heat collapsed rings, burnt valves, bent valves, warped heads, heat cracked heads and block (excludes freezing), thermostat failures, sensor failures

Additional Benefits: Choice of towing, dock side assistance, hoist and lift out or pick up and delivery. Taxes, shop supplies, lubricants, coolants, filters, spark plugs, hoses, clamps, belts, engine tuning, and lake/sea trial when necessary for a covered repair.

Three Year Protection

Gelcoat Finish: Protection from stress cracks, air voids or blisters

Upholstery/Canvas: Protection from defective materials or workmanship

Components: Manufactured by Cobalt





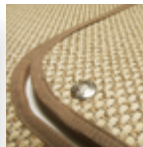
2013 COLOR SELECTIONS

Cockpit Interiors

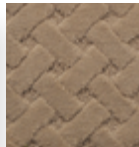
SAND INTERIOR
with sandstone carpet



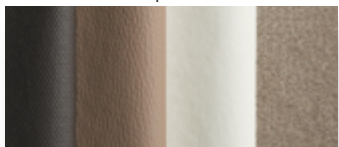
SEA GRASS
carpet option



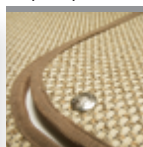
CESARA
carpet option



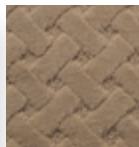
TERRA BROWN INTERIOR
with sandstone carpet



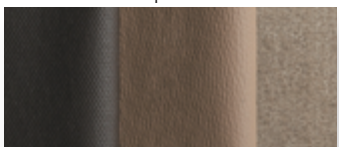
SEA GRASS
carpet option



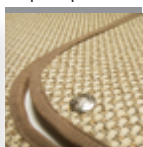
CESARA
carpet option



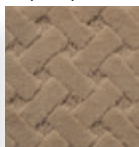
GENEVA INTERIOR
with sandstone carpet



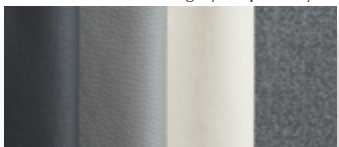
SEA GRASS
carpet option



CESARA
carpet option



SUMMIT GREY INTERIOR
available with summit grey carpet only



Cabin Interiors

COASTAL BLUE



SEA SPRAY



SUNSET



Exterior Colors and Graphic Styles



3 COLOR CUSTOM GRAPHICS

White base gelcoat with any primary hull color plus an accent. Available on all models.



3 COLOR CUSTOM WITH DECK STRIPE

3 Color Custom with the addition of a deck stripe. Available on the 232 only.



CLASSIC GRAPHICS

White base gelcoat with one primary hull color. Available on all models.



CLASSIC WITH DECK STRIPE

Classic with the addition of a deck stripe. Available on the 232 only.



FULL COLOR HULL BOTTOM

Primary hull color fully to the keel. Not available on A-Series or models 296 and larger.



SPORT GRAPHICS

White hull with a single accent stripe. Available on all models.



SPORT WITH DECK STRIPE

White hull with a single accent stripe and deck stripe. Available on the 232 only.



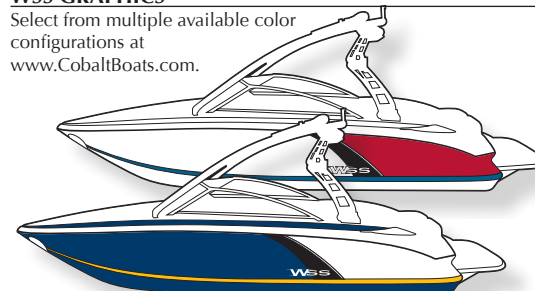
ALL WHITE

White hull and deck. Available on all models.



WSS GRAPHICS

Select from multiple available color configurations at www.CobaltBoats.com.



Actual colors may vary due to the limitations of the display method and the light under which they are viewed. Consult your Cobalt dealer as equipment and specifications are subject to change without notice.