

THIS DOCUMENT IS THE PROPERTY OF BOSTON WHALER, INC. MFG. DEPT., EDGEWATER, FLORIDA. ALL RIGHTS ARE RESERVED. THIS DOCUMENT AND INFORMATION CONTAINED MUST NOT BE COPIED OR DISCLOSED TO OTHERS WITHOUT WRITTEN PERMISSION OF BOSTON WHALER, INC.

DWG. NO:
08502

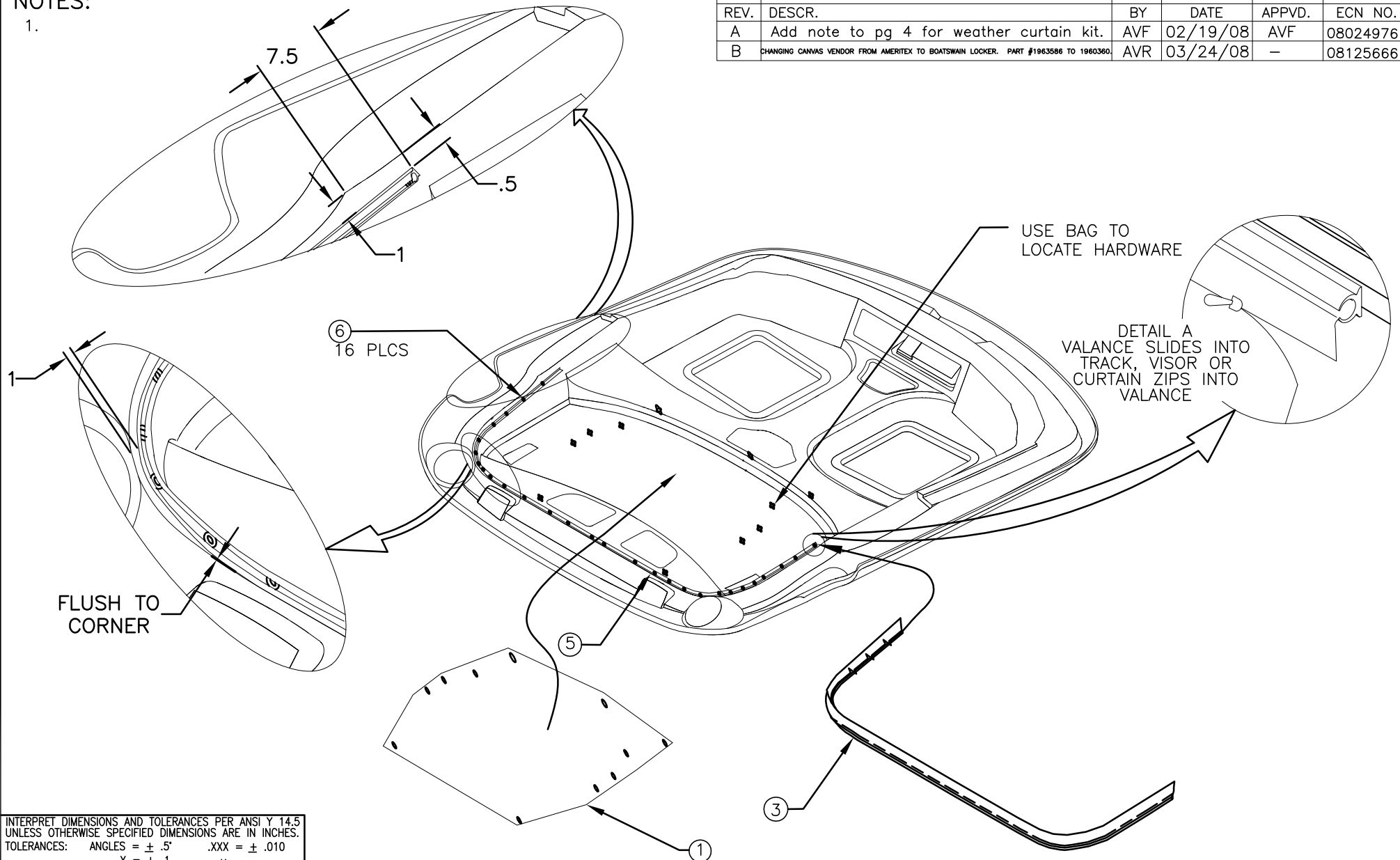
REV.
B

CURRENT ECD
08125666


NOTES:

1.

REVISIONS					
REV.	DESCR.	BY	DATE	APPVD.	ECN NO.
A	Add note to pg 4 for weather curtain kit.	AVF	02/19/08	AVF	08024976
B	CHANGING CANVAS VENDOR FROM AMERITEX TO BOATSWAIN LOCKER. PART #1963586 TO 1960360.	AVR	03/24/08	-	08125666



INTERPRET DIMENSIONS AND TOLERANCES PER ANSI Y 14.5 UNLESS OTHERWISE SPECIFIED DIMENSIONS ARE IN INCHES.
 TOLERANCES: ANGLES = ± .5° .XXX = ± .010
 .X = ± .1 X = ± 1/16
 .XX = ± .03 X = ± 1/16
 DO NOT SCALE DRAWING

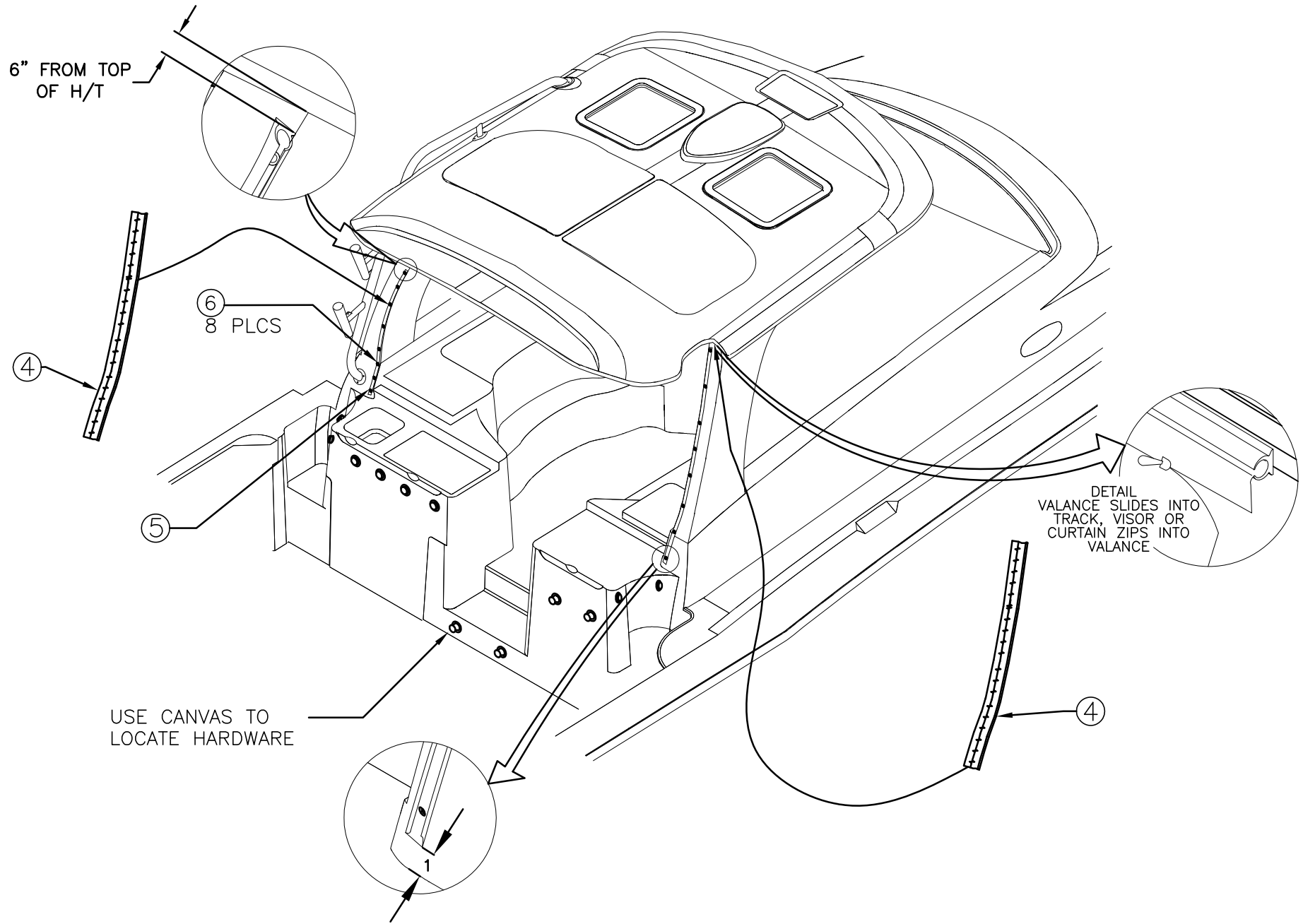
 PRODUCT DEV. & MFG. ENGINEERING GROUP	CHECKED: HW	DATE: 6/26/07	DRAWN: A. IRIZARRY	DATE: 06/20/07	SCALE: NONE	BOAT MODEL	MOLD NO.
	APPD: RA	DATE: 6/26/07	DWG. TITLE:		345CQ		
	DESIGN: VPK	DATE: 6/27/07	HARDTOP CANVAS ASSY		INIT. REL. ECN NO:	DWG. NO:	SHT. NO.
	INT. ENG: MG	DATE: 6/27/07			060637	08502	1 OF 4

THIS DOCUMENT IS THE PROPERTY OF BOSTON WHALER, INC. MFG. DEPT., EDGEWATER, FLORIDA. ALL RIGHTS ARE RESERVED. THIS DOCUMENT AND INFORMATION CONTAINED MUST NOT BE COPIED OR DISCLOSED TO OTHERS WITHOUT WRITTEN PERMISSION OF BOSTON WHALER, INC.

DWG. NO:
08502

REV.
B

CURRENT ECD
08125666



USE CANVAS TO LOCATE HARDWARE

DETAIL
VALANCE SLIDES INTO
TRACK, VISOR OR
CURTAIN ZIPS INTO
VALANCE

INTERPRET DIMENSIONS AND TOLERANCES PER ANSI Y 14.5 UNLESS OTHERWISE SPECIFIED DIMENSIONS ARE IN INCHES.
TOLERANCES: ANGLES = $\pm .5^\circ$.XXX = $\pm .010$
.X = $\pm .1$.XX = $\pm .03$ X = $\pm 1/16$
DO NOT SCALE DRAWING

DRAWN: A. IRIZARRY

DATE: 06/20/07

SCALE: NONE

BOAT MODEL
345CQ

MOLD NO.

DWG. TITLE:

HARDTOP CANVAS ASSY

INIT. REL. ECN NO:
060637

DWG. NO:
08502

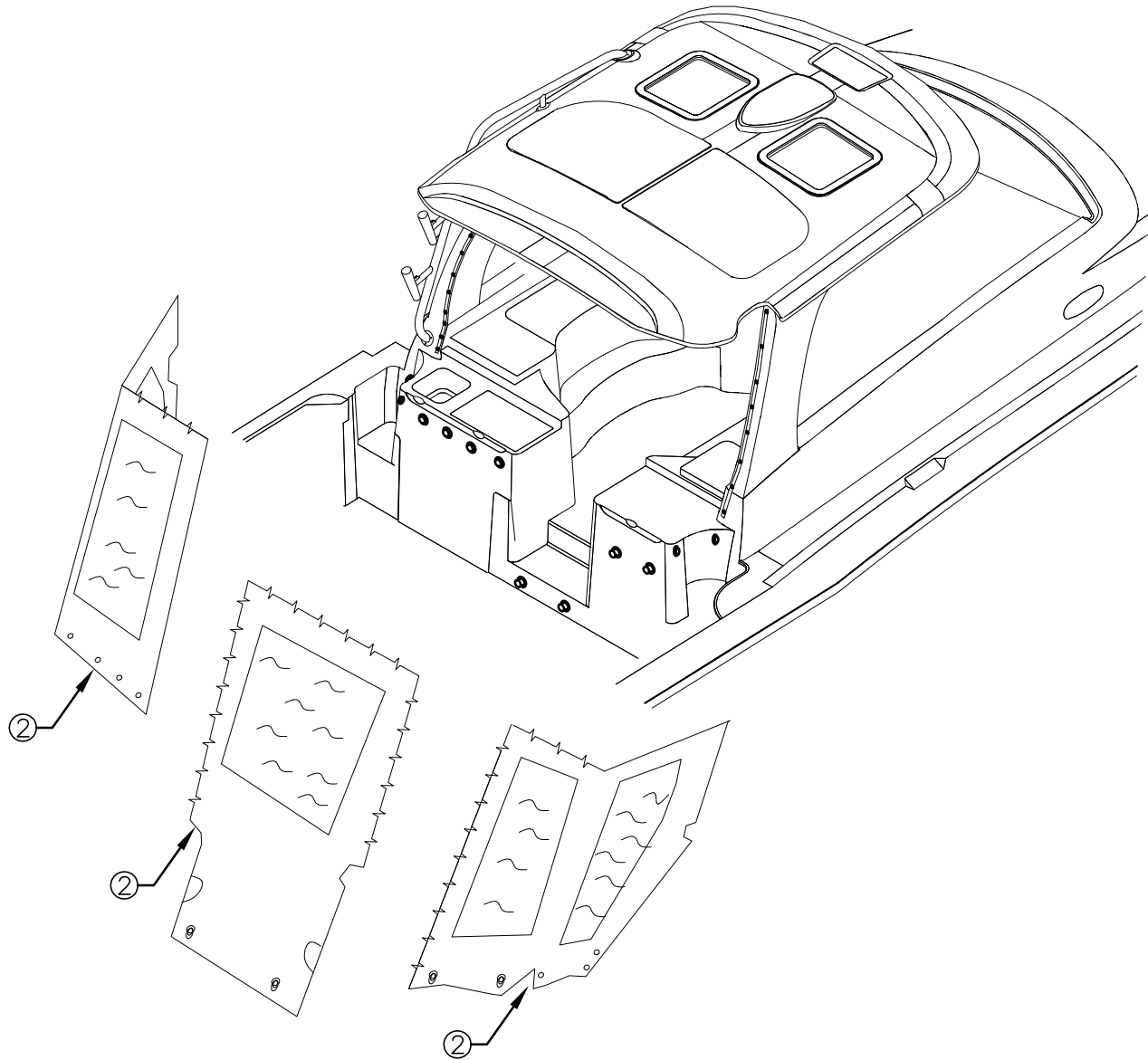
SHT. NO.
2 OF 4

THIS DOCUMENT IS THE PROPERTY OF BOSTON WHALER, INC. MFG. DEPT.,
 EDGEWATER, FLORIDA. ALL RIGHTS ARE RESERVED. THIS DOCUMENT AND
 INFORMATION CONTAINED MUST NOT BE COPIED OR DISCLOSED TO OTHERS
 WITHOUT WRITTEN PERMISSION OF BOSTON WHALER, INC.

DWG. NO:
 08502

REV.
 B

CURRENT ECD
 08125666



INTERPRET DIMENSIONS AND TOLERANCES PER ANSI Y 14.5
 UNLESS OTHERWISE SPECIFIED DIMENSIONS ARE IN INCHES.
 TOLERANCES: ANGLES = $\pm .5^\circ$.XXX = $\pm .010$
 .X = $\pm .1$.XX = $\pm .03$ $\frac{X}{X}$ = $\pm 1/16$
 DO NOT SCALE DRAWING

DRAWN: A. IRIZARRY

DATE: 06/20/07

SCALE: NONE

BOAT MODEL

MOLD NO.

345CQ

DWG. TITLE:

HARDTOP CANVAS ASSY

INIT. REL. ECN NO:

DWG. NO:

060637

08502

SHT. NO.

3 OF 4



THIS DOCUMENT IS THE PROPERTY OF BOSTON WHALER, INC. MFG. DEPT., EDGEWATER, FLORIDA. ALL RIGHTS ARE RESERVED. THIS DOCUMENT AND INFORMATION CONTAINED MUST NOT BE COPIED OR DISCLOSED TO OTHERS WITHOUT WRITTEN PERMISSION OF BOSTON WHALER, INC.

DWG. NO:
08502

REV.
B

CURRENT ECD
08125666

Notes:

Please note the following weather curtain kit:
Kit #1960360 CANVAS, 345CQ HT DROP CURT KIT WHT (B)
Includes 1899367, 1899368, 1899369, and 1899370.

PARTS LIST

ITEM	ITEM QT	U/M	DESCRIPTION	BWI NO.
1	1	EA.	CANVAS, BW345CQ-08 H/T STRG BAG WHT	1899370
2	1	EA.	CANVAS, 345CQ-08 H/T DROP CURT WHT	1899367
3	1	EA.	CANVAS, BW345CQ-08 H/T DROP CONN WHT	1899368
4	1	EA.	CANVAS, BW345CQ-08 H/T SIDE CONN WHT	1899369
5	2	EA.	TRACK, PVC RIGID 10' WHT	1617398
6	32	EA.	SCREW, TAPPING #6A X 3/4" PFH SC	1010370



INTERPRET DIMENSIONS AND TOLERANCES PER ANSI Y 14.5
UNLESS OTHERWISE SPECIFIED DIMENSIONS ARE IN INCHES.
TOLERANCES: ANGLES = ± .5° .XXX = ± .010
.X = ± .1 X = ± 1/16
.XX = ± .03

DO NOT SCALE DRAWING

DRAWN: A. IRIZARRY DATE: 06/20/07 SCALE: NONE

DWG. TITLE:
HARDTOP CANVAS ASSY

BOAT MODEL
345CQ

MOLD NO.

INIT. REL. ECN NO:
060637

DWG. NO:
08502

SHT. NO.
4 OF 4