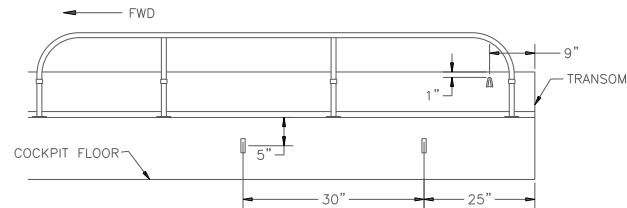
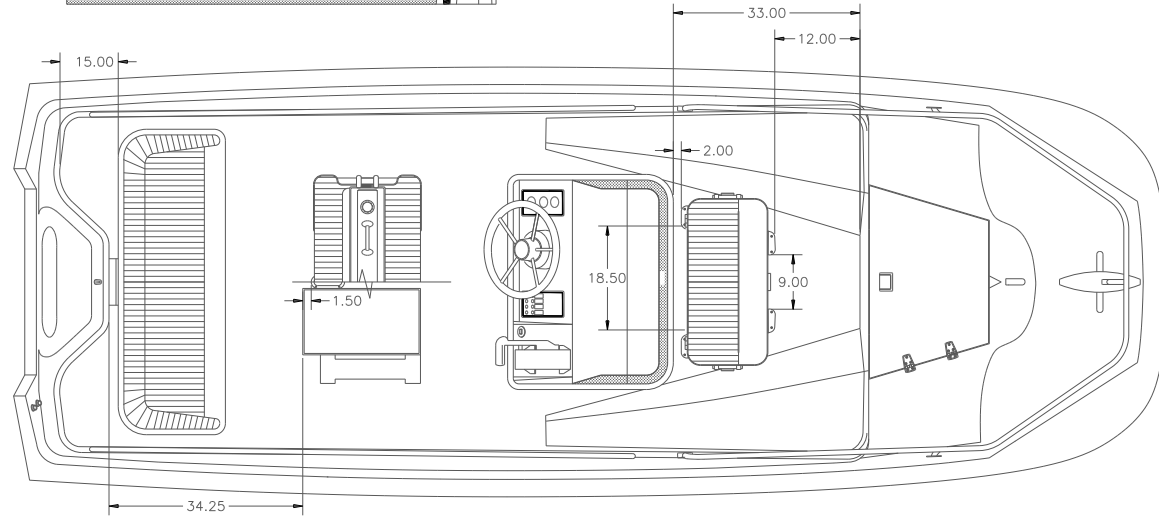
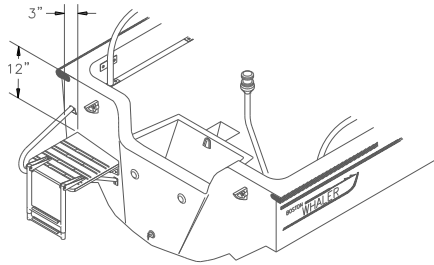


- NOTES:
 1. MOUNT TERMINAL BLOCK JUST BELOW RADIUS AS SHOWN.
 2. USE SILICONE TO SEAL TERMINAL BLOCK TO FIBERGLASS.
 3. AFTER INSTALLATION ALL CONNECTIONS MUST BE COVERED WITH NEOPRENE.



POLE CLIP AND STERNLIGHT CLAMSHELL INSTALLATION
 VIEW AT STBD AFT SIDE OF BOAT

UNLESS OTHERWISE SPECIFIED:
 DIMENSIONS ARE IN INCHES
 TOLERANCES
 DECIMALS ANGULAR
 ± .X ± X
 ± .XX ± .XX
 DO NOT SCALE DRAWING

**ASSEMBLY & PARTS
 IDENT. DOCUMENT**

SCALE: NONE DRAWN JS
 DATE: 6/2/00 CHKD.
 DESIGN
 MFG.



ENGINEERING DEPARTMENT
 TITLE: 17' MONTAUK
 OPTIONAL EQUIP.
 OUTFIT

CODE	DESCRIPTION	DATE	BY	APPD
—	MODEL YEAR 2001 COPY	6/16/00	RD	
REVISIONS				