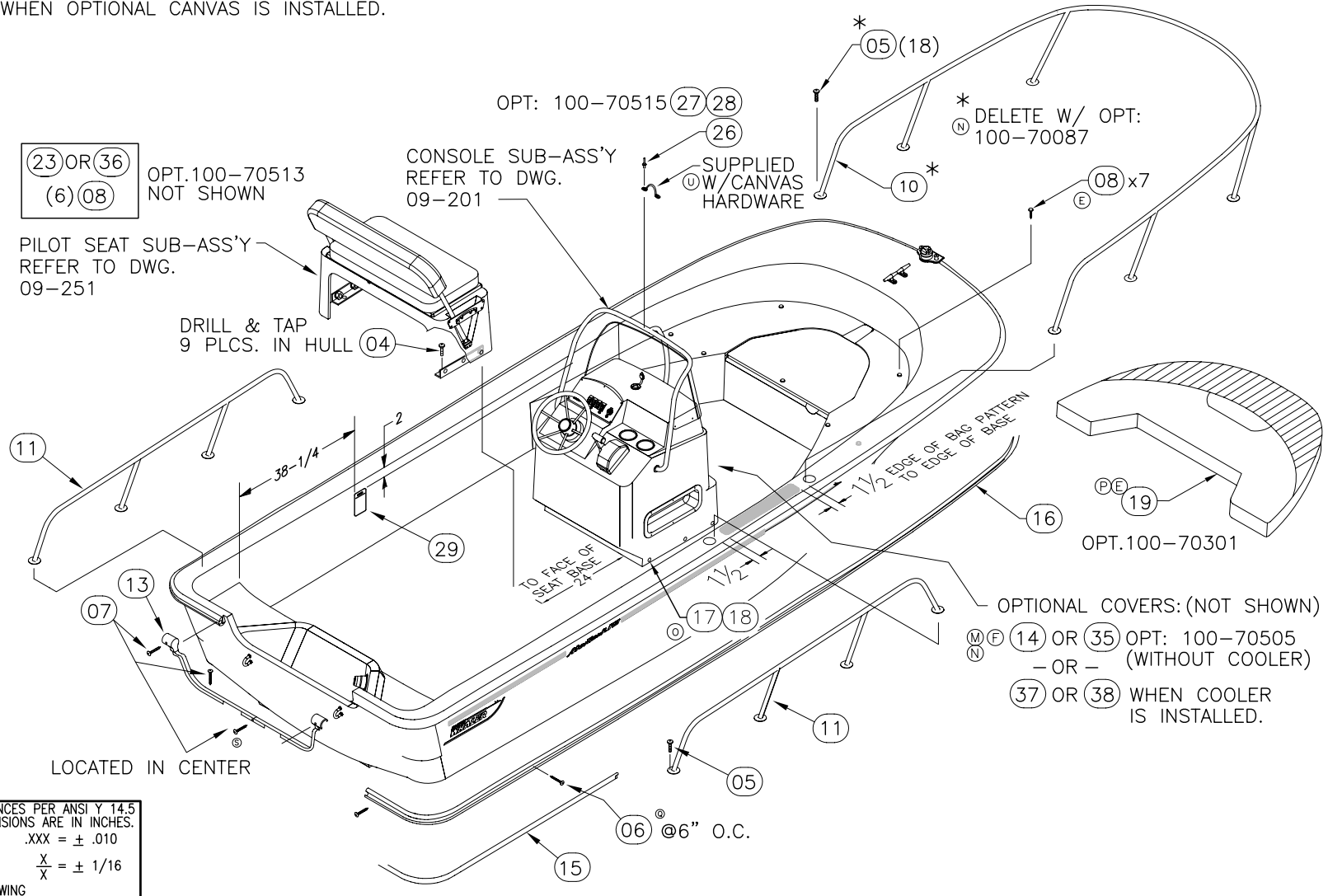


THIS DOCUMENT IS THE PROPERTY OF BOSTON WHALER, INC. MFG. DEPT., EDGEWATER, FLORIDA. ALL RIGHTS ARE RESERVED. THIS DOCUMENT AND INFORMATION CONTAINED MUST NOT BE COPIED OR DISCLOSED TO OTHERS WITHOUT WRITTEN PERMISSION OF BOSTON WHALER, INC.

DWG. NO: 11201  
 REV. U  
 CURRENT ECD 051232

REVISIONS					
REV.	DESCR.	BY	DATE	APPVD.	ECN NO.
P	#19 P/N 1781378 WAS 1690127 & #20 P/N 1781380 WAS 1691319.	SL	07/19/05	ME	04-06-36
Q	CHANGED PN# & DESCRIPTION ITEM 6, SHEETS 1 & 3	SLJ	09/15/05	MG	05-09-06
R	ADD OPT. 100-75318 , PAGE 3, & ITEM#'S 39 THRU 45	GD	11/1/05	MG	05-06-28
S	ADDED CENTER TRANSOM TRIM SCREW, #7, SHEETS 1 & 4	SLJ	01/10/06	ME	051148
T	CHANGED PN# & DESCRIPTION ITEM 10, SHEET 4	SLJ	01/16/06	ME	051226
U	DELETED ITEM # 9, CALL OUT ITEM AS SUPPLIED W/CANVAS HARDWARE, SHEETS 1 & 4.	SL	01/17/06	ME	051232

- REFER TO DWG. 07-401, WIRING DIAGRAM" FOR CONSOLE TO HULL INTERCONNECTS.
- ALL DRILLED HOLES (FOR MOUNTING COMPONENTS & HARDWARE TO HULL) SHALL BE SEALED W/ WHITE SILICONE SEALANT WHEN THE FASTENER IS INSTALLED.
- THE CANVAS MANUFACTURERS' INSTRUCTIONS W/ CANVAS SHALL BE USED WHEN OPTIONAL CANVAS IS INSTALLED.



INTERPRET DIMENSIONS AND TOLERANCES PER ANSI Y 14.5 UNLESS OTHERWISE SPECIFIED DIMENSIONS ARE IN INCHES.  
 TOLERANCES: ANGLES = ± .5° .XXX = ± .010  
 .X = ± .1 .XX = ± .03 X = ± 1/16  
 DO NOT SCALE DRAWING



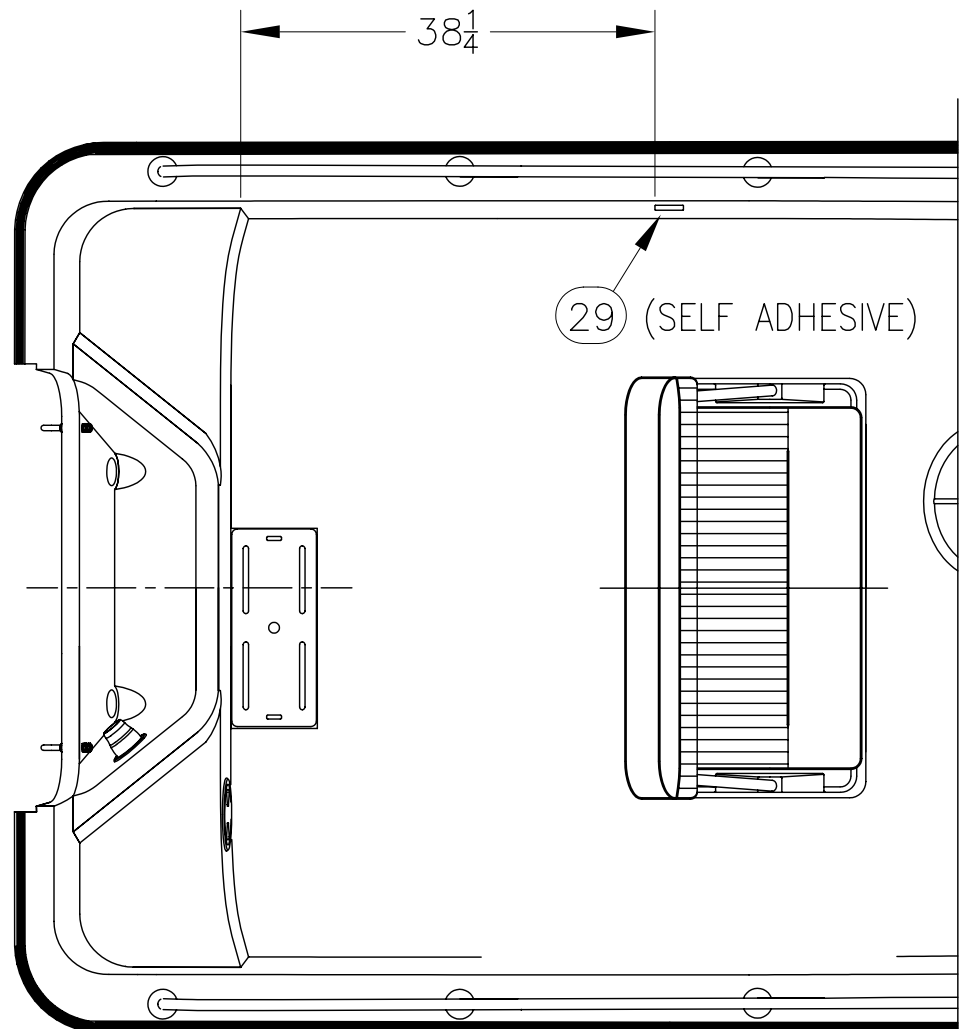
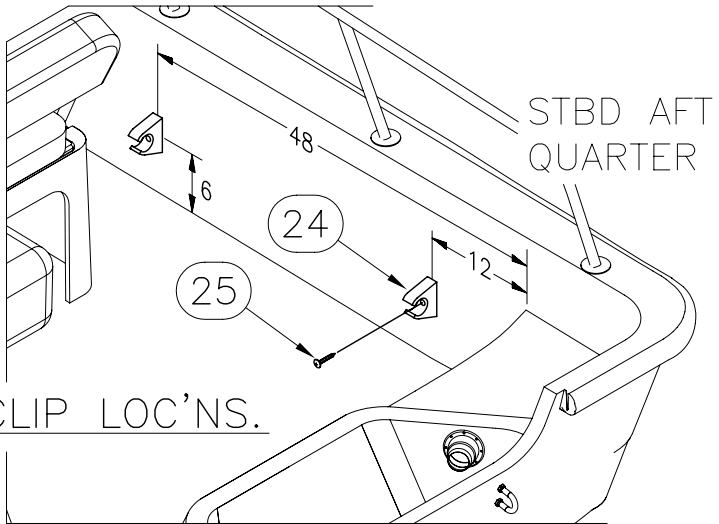
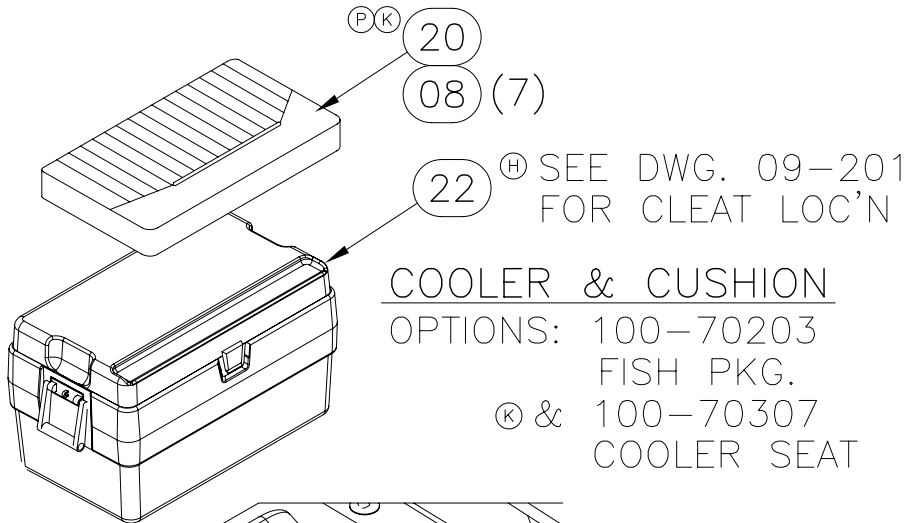
CHECKED: R. AVILA	DATE: 01/28/02	DRAWN: H READ	DATE: 01/22/02	SCALE: NONE	BOAT MODEL 17MTK	MOLD NO.
APPD: K. RANIERI	DATE: 01/28/02	DWG. TITLE: Final Assembly			INIT. REL. ECN NO: 010976	DWG. NO: 11201
DESIGN: L. SCHOLZ	DATE: 01/28/02				SHT. NO. 1 OF 4	
INT. ENG: M. GATICA	DATE: 2/11/02					

THIS DOCUMENT IS THE PROPERTY OF BOSTON WHALER, INC. MFG. DEPT., EDGEWATER, FLORIDA. ALL RIGHTS ARE RESERVED. THIS DOCUMENT AND INFORMATION CONTAINED MUST NOT BE COPIED OR DISCLOSED TO OTHERS WITHOUT WRITTEN PERMISSION OF BOSTON WHALER, INC.

DWG. NO:  
11201

REV.  
U

CURRENT ECD  
051232



INTERPRET DIMENSIONS AND TOLERANCES PER ANSI Y 14.5 UNLESS OTHERWISE SPECIFIED DIMENSIONS ARE IN INCHES.  
 TOLERANCES: ANGLES = ± .5° .XXX = ± .010  
 .X = ± .1 X = ± 1/16  
 .XX = ± .03  
 DO NOT SCALE DRAWING

DRAWN: H READ DATE: 01/22/02 SCALE: NONE  
 DWG. TITLE: Final Assembly

BOAT MODEL: 17MTK  
 INIT. REL. ECN NO: 010976

MOLD NO.  
 DWG. NO: 11201

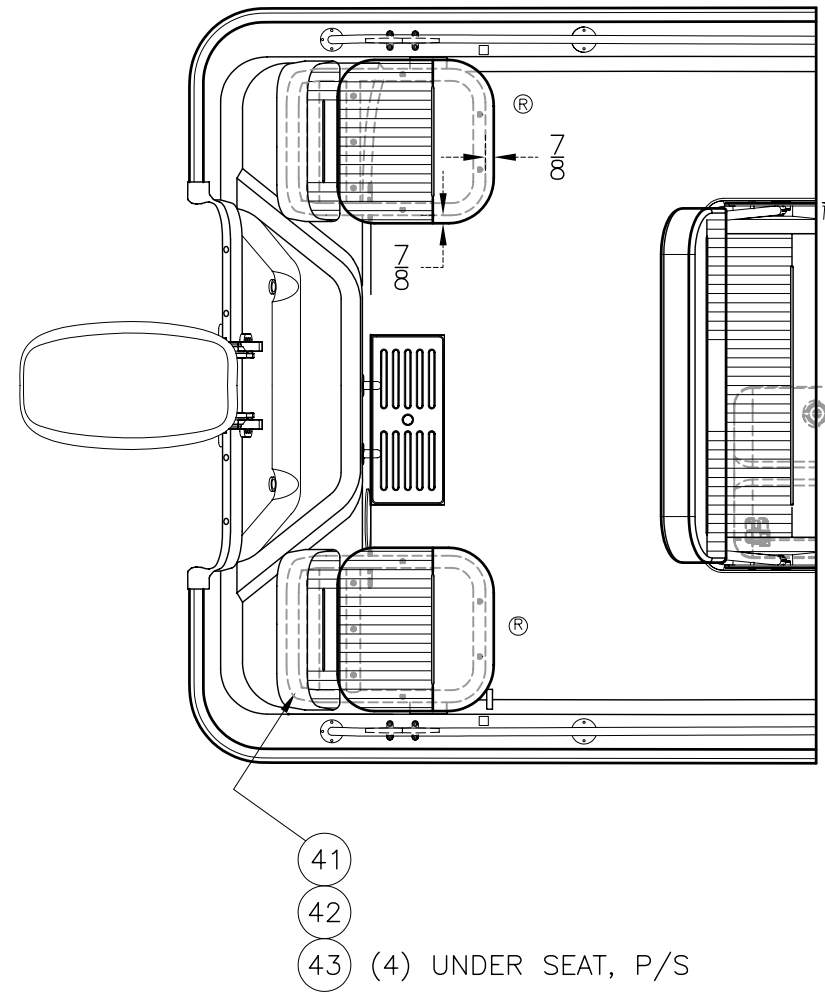
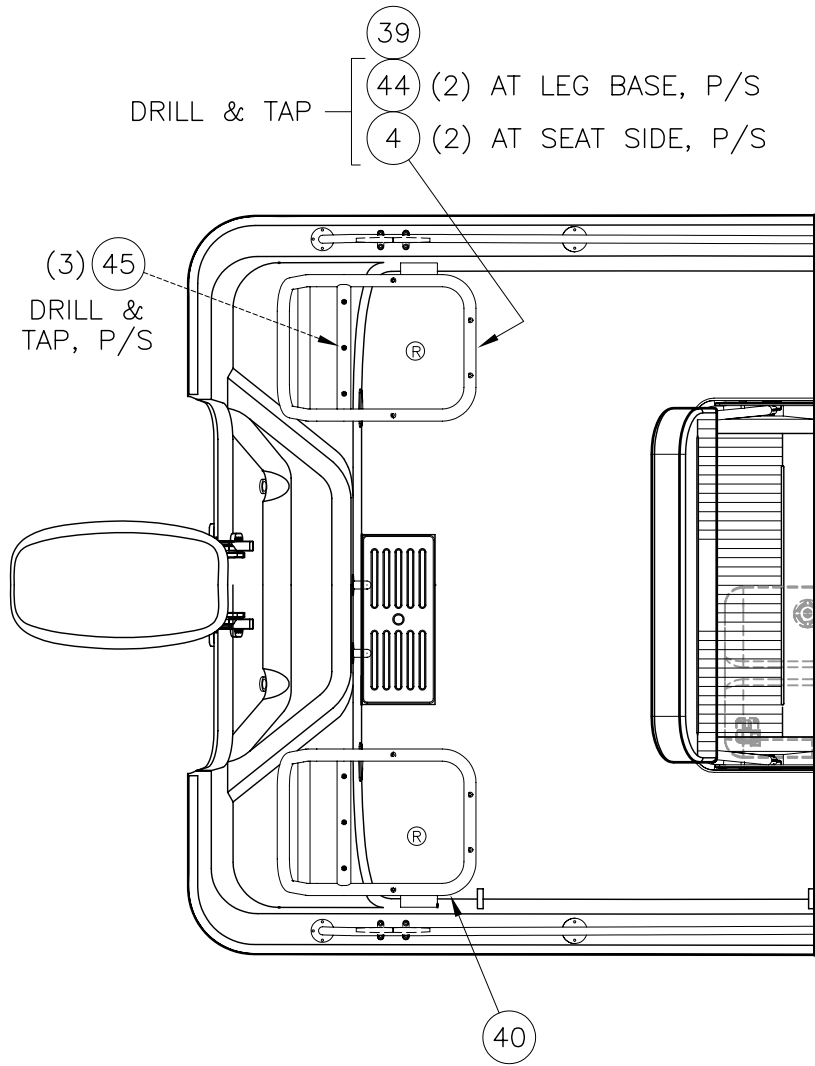
SHT. NO. 2 of 4

THIS DOCUMENT IS THE PROPERTY OF BOSTON WHALER, INC. MFG. DEPT., EDGEWATER, FLORIDA. ALL RIGHTS ARE RESERVED. THIS DOCUMENT AND INFORMATION CONTAINED MUST NOT BE COPIED OR DISCLOSED TO OTHERS WITHOUT WRITTEN PERMISSION OF BOSTON WHALER, INC.

DWG. NO:  
11201

REV.  
U

CURRENT ECD  
051232



OPT: 100-75318



INTERPRET DIMENSIONS AND TOLERANCES PER ANSI Y 14.5 UNLESS OTHERWISE SPECIFIED DIMENSIONS ARE IN INCHES.  
 TOLERANCES: ANGLES = ± .5° .XXX = ± .010  
 .X = ± .1 X = ± 1/16  
 .XX = ± .03  
 DO NOT SCALE DRAWING

DRAWN: H READ DATE: 01/22/02 SCALE: NONE  
 DWG. TITLE: Final Assembly

BOAT MODEL: 17MTK  
 INIT. REL. ECN NO: 010976

MOLD NO.  
 DWG. NO: 11201


SHT. NO. 3 OF 4

# PARTS LIST

ITEM	QTY.	U/M	DESCRIPTION	B.W.I. NO.
Ⓜ	1	EA.	CLEAT ASSY, HDPE BW-98 COOLER 72QT PORT	1068139
Ⓜ	1	EA.	CLEAT ASSY, HDPE BW-98 COOLER 72QT STBD	1068121
Ⓜ	4	EA.	SCREW, TAPPING #8A x 5/8 PTH SC	1010925
Ⓜ	13	EA.	SCREW, MACHINE #1/4-20 X 1.5" PPH SC	1008598
Ⓜ	42	EA.	SCREW, MACHINE #1/4-20 X 1" PPH SC	1008580
Ⓜ	90	EA.	SCREW, TAP #10A X 1.5" W/STP EPXY ORNG PFH	1814515
Ⓜ	5	EA.	SCREW, TAPPING #8A X 1" PTH SC	1008804
Ⓜ	20	EA.	SNAP STUD, W/#8 X 3/8" PH BR/NI/SS	203786
Ⓜ	1	EA.	EYE, STRAP EYE TIE-DOWN 5/16" CHR/ZINC	861120-
Ⓜ	1	EA.	RAIL, BOW BW170MT-06 SS	1817768
Ⓜ	2	EA.	RAIL, SIDE BW170MT-02 AFT	1689429
Ⓜ	6	EA.	SCREW, TAPPING #10A X 1.5" PFH SC	1010248
Ⓜ	1	EA.	CAP, RUBRAIL BW170MT-02 TRNSM TRIM	1690126
Ⓜ	1	EA.	CANVAS, BW17MTK-05 CNSL CVR BLK	1771130
Ⓜ	1	EA.	INSERT, RUB RAIL CHAR FLEX 40'	1020817
Ⓜ	1	EA.	RUBRAIL, PLASTIC CHAR 40'	1020858
Ⓜ	9	EA.	SCREW, TAPPING #14A X 1.5" PFH SC	1008382
Ⓜ	9	EA.	WASHER, FINISH #12 SS	958868
Ⓜ	1	EA.	CUSH, BW17MTK-05 BOW	1781378
Ⓜ	1	EA.	CUSH, BW17MTK-05 COOLER SEAT 72QT	1781380
Ⓜ	2	EA.	HOOK, PLAS COOLER 1/8" WHT	1043181
Ⓜ	1	EA.	COOLER, 72QT WHT	1016427
Ⓜ	1	EA.	CANVAS, BW170MT-05 REV'BL SEAT CVR BLK	1771128
Ⓜ	1	PR.	CLIP, POLE STRG BLK - MAST LIGHT	0590646
Ⓜ	2	EA.	SCREW, TAPPING #10A X 1" PTH SC	1008739
Ⓜ	2	EA.	RIVET, POP/BLIND #3/16 X 3/8" SS	192120
Ⓜ	1	EA.	CANVAS, BW17MTK-04 BIM TOP W/BOOT BLK	1753197
Ⓜ	1	EA.	CANVAS, BW17MTK-04 BIM TOP W/BOOT BLUE	1756018
Ⓜ	1	EA.	LABEL, BW CLEARANCE 17MTK-04 STERN SEAT LEXAN	1769263
Ⓜ	2	EA.	PLATE, BW 97 STERN SEAT SUPPORT LEG	1023456
Ⓜ	12	EA.	SCREW, MACHINE #1/4-20 X 1.25" PFH SC	1213289
Ⓜ	1	EA.	CUSH, BW17MTK-04 STERN SEAT W/HDWR WHT/GRY	1766465
Ⓜ	4	EA.	KNOB, LOCKING 3/8-16 X 3/4" SS	1510957
Ⓜ	1	EA.	CANVAS, BW17MTK-04 CNSL CVR W/COOLRCUTOUT GRY	1760645
Ⓜ	1	EA.	CANVAS, BW17MTK-05 CNSL CVR BLUE	1771131
Ⓜ	1	EA.	CANVAS, BW170MT-05 REV'BL SEAT CVR BLUE	1771129
Ⓜ	1	EA.	CANVAS, BW17MTK-05 CNSL CVR W/COOLRCUTOUT BLK	1776599
Ⓜ	1	EA.	CANVAS, BW17MTK-05 CNSL CVR W/COOLRCUTOUT BLU	1776601
Ⓜ	1	EA.	FRAME, BW170DIS-04 ALUM AFT SEAT PRT	1773133
Ⓜ	1	EA.	FRAME, BW170DIS-04 ALUM AFT SEAT STB	1773134
Ⓜ	2	EA.	CUSH, BW170DIS-04 AFT SEAT	1773999
Ⓜ	2	EA.	CUSH, BW170DIS-04 B/R AFT SEAT	1774001
Ⓜ	8	EA.	SCREW, TAPPING #14A X 2" PFH SC	1010297
Ⓜ	4	EA.	SCREW, MACHINE #1/4-20 X 1.5" POH SC	1010438
Ⓜ	6	EA.	SCREW, MACHINE #1/4-20 X 2" PFH SC	1235308

THIS DOCUMENT IS THE PROPERTY OF BOSTON WHALER, INC. MFG. DEPT., EDGEWATER, FLORIDA. ALL RIGHTS ARE RESERVED. THIS DOCUMENT AND INFORMATION CONTAINED MUST NOT BE COPIED OR DISCLOSED TO OTHERS WITHOUT WRITTEN PERMISSION OF BOSTON WHALER, INC.

DWG. NO: 11201  
 REV. U  
 CURRENT ECD 051232

 <p><b>BOSTON WHALER</b>          PRODUCT DEV. &amp; MFG. ENGINEERING GROUP</p>	<p>DO NOT SCALE DRAWING</p> <p>INTERPRET DIMENSIONS AND TOLERANCES PER ANSI Y 14.5 UNLESS OTHERWISE SPECIFIED DIMENSIONS ARE IN INCHES.              TOLERANCES: ANGLES = ± .5°              .X = ± .1              .XX = ± .03              .XXX = ± .010              X = ± 1/16</p>	<p>DRAWN: H READ              DATE: 01/22/02              SCALE: NONE</p>	<p>BOAT MODEL: 17MTK              MOLD NO.              INT. REL. EGN NO: 010976              DWG. NO: 11201</p>
Final Assembly			<p>SHT. NO. 4              OF 4</p>