

THIS DOCUMENT IS THE PROPERTY OF BOSTON WHALER, INC. MFG. DEPT., EDGEWATER, FLORIDA. ALL RIGHTS ARE RESERVED. THIS DOCUMENT AND INFORMATION CONTAINED MUST NOT BE COPIED OR DISCLOSED TO OTHERS WITHOUT WRITTEN PERMISSION OF BOSTON WHALER, INC.

DWG. NO:
09201

REV.
G

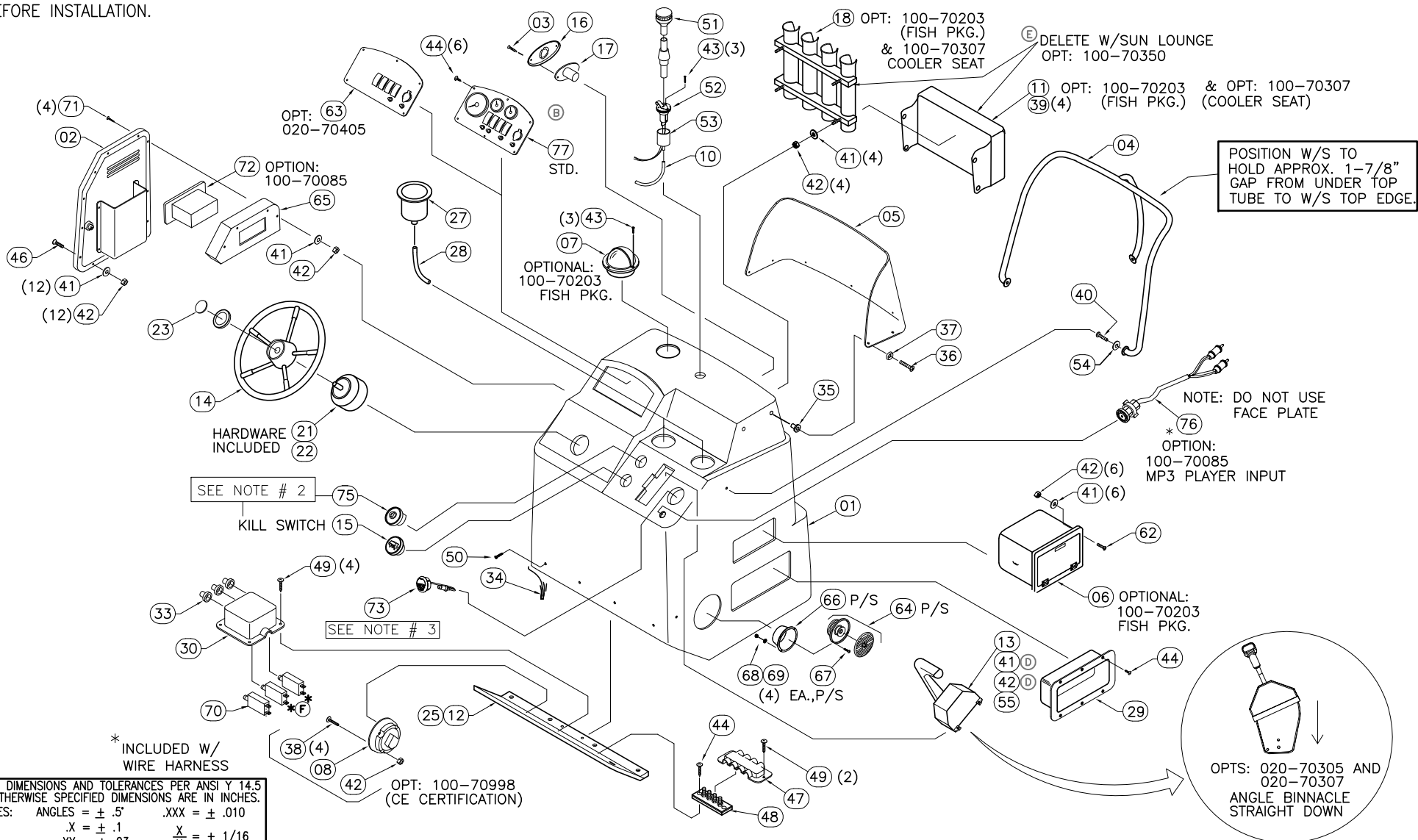
CURRENT ECD
07054353

NOTES:

1. REFER TO DWG. 01-251 FOR ALL HOSE CUT LENGTHS.
2. DELETE W/OPT 020-70405
DRILL WHEN OPT 020-70405 W/100-70005 IS ORDERED
3. ATTACH 18" OF 14 GA BLACK TO STEREO REMOTE BEFORE INSTALLATION.

REVISIONS

REV.	DESCR.	BY	DATE	APPVD.	ECN NO.
E	ADDED: DELETE W/SUN LOUNGE OPT. PG.1 & 3	JFH	5/02/07	VPK	06093674
F	REMOVED #S 31 & 32 FROM PAGE 1, NOTHING CALLED OUT IN BOM.	JFH	5/10/07	VPK	06093674
G	ADDED ROD HOLDER FASTENER LOCATION, SHEET 3	SLJ	05/23/07	AVM	07054353

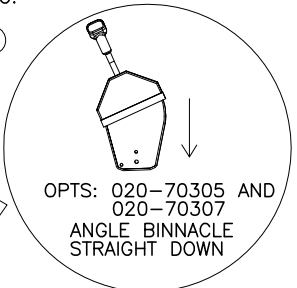


* INCLUDED W/
WIRE HARNESS

INTERPRET DIMENSIONS AND TOLERANCES PER ANSI Y 14.5 UNLESS OTHERWISE SPECIFIED DIMENSIONS ARE IN INCHES.
TOLERANCES: ANGLES = ± .5° .XXX = ± .010
.X = ± .1 .XX = ± .03 X = ± 1/16
DO NOT SCALE DRAWING

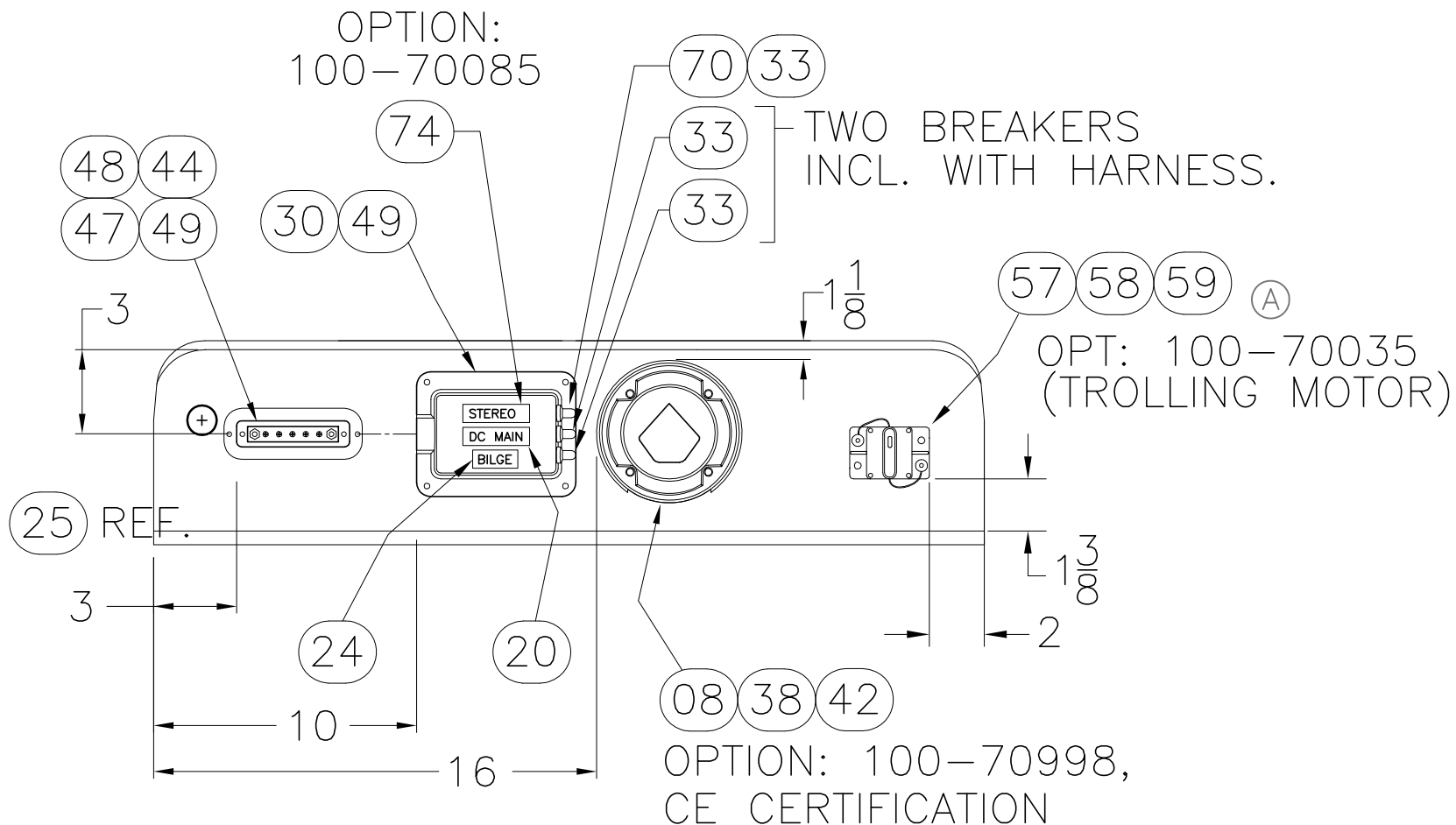
POSITION W/S TO HOLD APPROX. 1-7/8" GAP FROM UNDER TOP TUBE TO W/S TOP EDGE.

NOTE: DO NOT USE FACE PLATE
* OPTION:
100-70085
MP3 PLAYER INPUT



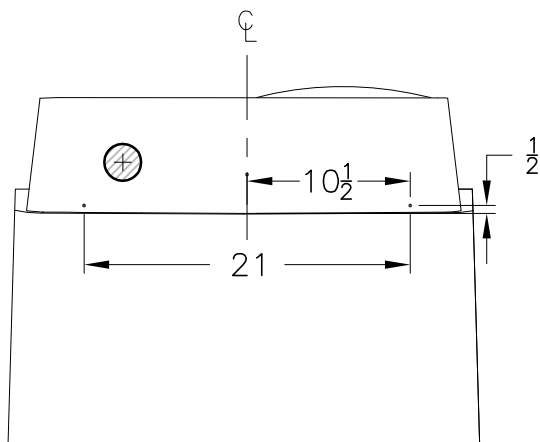
CHECKED: B. GARZA	DATE: 1/30/07	DRAWN: R.DURHAM	DATE: 01/23/07	SCALE: NONE	BOAT MODEL	MOLD NO.
APPD: K. RANIERI	DATE: 1/31/07	DWG. TITLE:			170MT	
DESIGN: V. KNIGHT	DATE: 2/1/07	CONSOLE ASSEMBLY			INIT. REL. ECN NO:	DWG. NO:
INT. ENG: M. GATICA	DATE: 2/5/07				06093674	09201
					1	OF 4

NOTES:



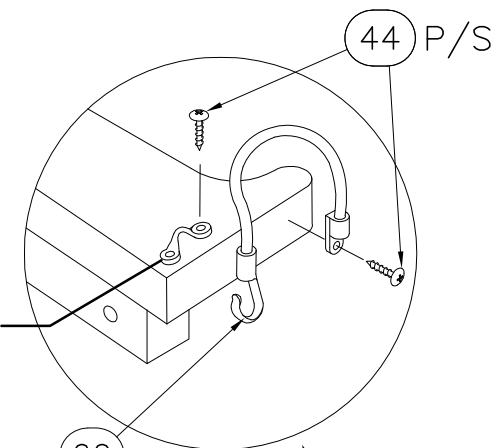
CONSOLE CLOSEOUT LAYOUT
(VIEW LOOKING AFT, FROM INSIDE CONSOLE)

NOTES:



ROD HOLDER
FASTENING
LOCATION

FWD. FACE



(PAD EYE
INCLUDED w/82)

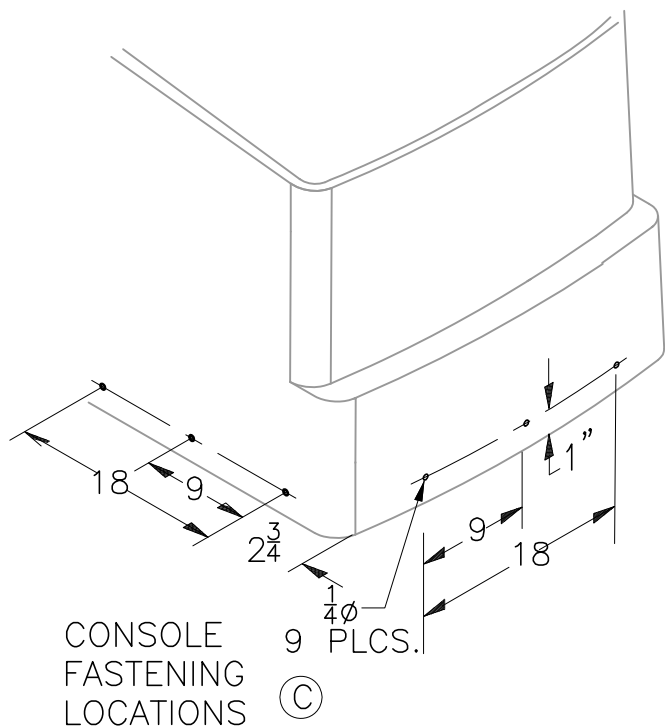
(60)
P/S

(61)

(56) (4)

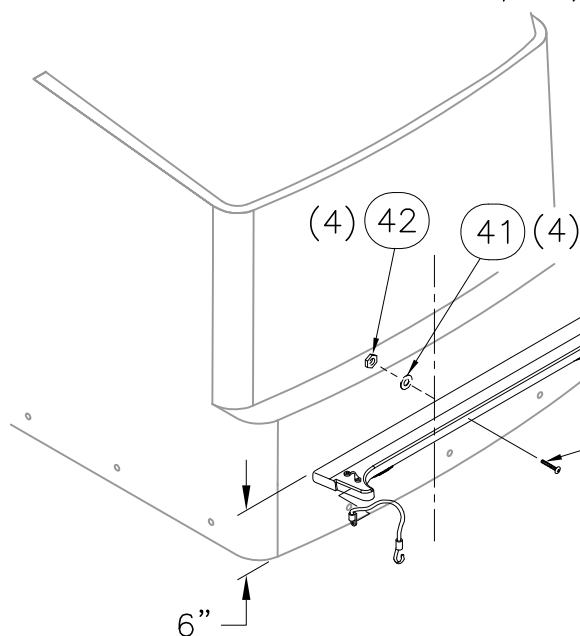
FISH PKG.
OPT: 100-70203
COOLER SEAT
OPT: 100-70307

(E) DELETE W/SUN LOUNGE
OPT: 100-70350



CONSOLE
FASTENING
LOCATIONS

(C)



(4) (42)

(4) (41)

6"

THIS DOCUMENT IS THE PROPERTY OF BOSTON WHALER, INC. MFG. DEPT., EDGEWATER, FLORIDA. ALL RIGHTS ARE RESERVED. THIS DOCUMENT AND INFORMATION CONTAINED MUST NOT BE COPIED OR DISCLOSED TO OTHERS WITHOUT WRITTEN PERMISSION OF BOSTON WHALER, INC.

DWG. NO:
09201

REV.
G

CURRENT ECD
07054353

BILL OF MATERIAL

ITEM	QTY.	U/M	DESCRIPTION	B.W.I. NO.
01	1	EA	FIBERGLASS PART, CONSOLE	22-K347-00
02	1	EA	DOOR, HDPE BW160DA/17MTK-06 CNSL	1803646
03	2	EA	SCREW, TAPPING #8A x 1" PTH SC	1008804
04	1	EA	RAIL, GRAB BW170MT-02 CNSL SS	1689427
05	1	EA	W/S, BW170MT-02 CNSL CLEAR	1689418
06	1	EA	BOX, PLAS BW-04 TACKLE 2-DRWR WHT	1761591
07	1	EA	COMPASS,FLSHMT 3 7/8" BLK WT HSE/GREEN LT	1791615
08	1	EA	SWITCH, BATTERY ON/OFF W/O LOCK W/O DISC	0162701
09	1	EA	PANEL, BW170MT-07 MERC ANALOG W/SW 60 ELPT	1848340
10	0	FT	HOSE, PVC CLEAR DRAIN 7/16"	1041490
11	1	EA	CUSH, BW17MTK-05 CNSL ROD HLDR	1781379
12	1	EA	PANEL, HDPE BW170MT-02 CLSOUT CNSL BASE	1690180
13	1	EA	CONTROL, CNSL MNT SGL N/HARNESS GEN II	1752911
14	1	EA	STEERING WHEEL, 15" DIA SS 25DEG	1020197
15	1	EA	ACC PART, MERC SW (SAFETY ASSY)	0882605
16	1	EA	HORN, SGL BLK NO CONN SERIES 84400-1	1780938
17	1	EA	HORN, GRILL SGL SS OVERLAY SERIES 84400-1	1781252
18	1	EA	ROD HOLDER, BW170MT-02 4-ROD ASSY	1690318
19	0	EA	X	X
20	1	EA	LABEL, BW DC MAIN BREAKER	1075282
21	1	EA	STEERING, HELM NFB SGL	0626143
22	1	EA	STEERING BEZEL 90 DEG SGL	626150
23	1	EA	EMBLEM, BW STEERING WHEEL CAP	1021054
24	1	EA	LABEL, BILGE (LEXAN)	1745123
25	1	EA	PANEL, HDPE BW170MT-08 CLSOUT CNSL LRG	1890729
26	0	EA	X	X
27	2	EA	DRINKHOLDR, PLAS W/DRAIN DEEP XLG SZ BLK	1727419
28	0	FT	HOSE, PVC CLEAR 3/8"	0124347
29	1	EA	BOX, ABS FIRE EXT SHORT WHT	1037555
30	1	EA	BOX, ABS HARNESS	1037530
31	0	EA	X	X
32	0	EA	X	X
33	3	EA	BOOT, RESET BRKR CLEAR	1066547
34	13	FT	TRIM, EDGE WHITE FLEX 'L'-TRIM	1020924
35	7	EA	NUT, WELL	1033422
36	7	EA	SCREW, MACHINE #10-32 x 1-1/4" PFH SC	1010107
37	7	EA	WASHER, FINISH #10 SS	0896258
38	4	EA	SCREW, MACHINE #10-24 X 1.75" PTH SC	1341973
39	4	EA	SNAP STUD, W/#8 X 3/8" PH BR/NI/SS	0203786
40	3	EA	SCREW, CAP #5/16-18 X 1.25" HEX HD SC	1742748

BILL OF MATERIAL

ITEM	QTY.	U/M	DESCRIPTION	B.W.I. NO.
41	30	EA	WASHER, FLAT #10 SC	1260751
42	34	EA	NUT, HEX NYLON LOCK #10-24 SC	1007772
43	6	EA	SCREW, TAPPING #6 x 3/4" POH SC	1008564
44	18	EA	SCREW, TAPPING #8 x 5/8" PTH SC	1010925
45	0	EA	X	X
46	12	EA	SCREW, MACHINE #10-24 x 1.25" POH SC	1008424
47	1	EA	COVER, ABS BW MINIBUSS BLK	1185016
48	1	EA	BUSS BAR, MINIBUS BAR DC	1324334
49	6	EA	SCREW, TAPPING #8 x 1/2" PTH SC	1008812
50	4	EA	SCREW, TAPPING #8 x 3/4" PFH SC	1008408
51	1	EA	LIGHT, NAV A/R STERN 52" N/BEND	574400
52	1	EA	LIGHT, NAV STERN BASE RND CHR.	331751
53	1	EA	CAP, DRAINBOOT STERN LIGHT MAST BLK	1042761
54	3	EA	WASHER, LOCK/SPLIT 5/16" SC	1260611
55	4	EA	SCREW, MACHINE #10-24 X 1.25" PPH SC	1008630
56	4	EA	SCREW, MACHINE #10-24 X 1.75" PTH SC	1341973
57	1	EA	BRKR, SURF MNT THERMAL 40AMP SWITCHABLE	1475433
58	2	EA	BOOT, PVC TERM INSUL CAP RED	1689904
59	2	EA	SCREW, TAPPING #10A X 3/4" PTH SC	1008762
60	2	EA	STRAP, COOLER TAMER 7" CNSL MNT	1741035
61	1	EA	HOLDER, HDPE BW17MTK-04 COOLER	1756620
62	6	EA	SCREW, MACHINE #10-24 X 3/4" PTH SC	1008705
63	1	EA	PANEL, BLANK:BW170MT-07 W/SW	1848341
64	2	EA	SPEAKER, COAXIAL 6.5" W/WHT CVR	1690555
65	1	EA	PANEL, HDPE BW160DA/17MTK-06 CLOSEOUT STEREO	1803648
66	2	EA	COVER, ABS BW-97 SPKR 7 1/8" RAD	1047836
67	8	EA	SCREW, MACHINE #6-32 X 1" PFH SC	1010172
68	8	EA	WASHER, FLAT #6 SC	1326222
69	8	EA	NUT, LOCK 6-32 SC	1009810
70	1	EA	BRKR, MANUAL RESET 15A	1750593
71	4	EA	SCREW, MACHINE #10-24 X 4" POH SC	1812435
72	1	EA	STEREO, AM/FM CD/CHNGR/SIR/XM SAT CMD4A	1854318
73	1	EA	STEREO, REMOTE CNTRL W/DIG DSPLY FOR CMD4 BLK	1803894
74	1	EA	LABEL, BW STEREO	1075266
75	1	EA	SWITCH, IGN ASSY 4-POSITION W/HOUSING	1801954
76	1	EA	VIDEO EQUIPMENT, AUXILIARY INPUT MA-AUX2	1849383
77	1	EA	PANEL, BW170MT-07 MERC ANALOG W/SW	1837738



INTERPRET DIMENSIONS AND TOLERANCES PER ANSI Y 14.5 UNLESS OTHERWISE SPECIFIED DIMENSIONS ARE IN INCHES.
 TOLERANCES: ANGLES = ± .5° .XXX = ± .010
 .X = ± .1 X = ± 1/16
 .XX = ± .03
 DO NOT SCALE DRAWING

DRAWN: R.DURHAM

DATE: 01/23/07

SCALE: NONE

BOAT MODEL
170MT

MOLD NO.

DWG. TITLE:
CONSOLE ASSEMBLY

INIT. REL. ECN NO:
06093674

DWG. NO:
09201

SHT. NO.
4 OF 4