

THIS DOCUMENT IS THE PROPERTY OF BOSTON WHALER, INC. MFG. DEPT., EDGEWATER, FLORIDA. ALL RIGHTS ARE RESERVED. THIS DOCUMENT AND INFORMATION CONTAINED MUST NOT BE COPIED OR DISCLOSED TO OTHERS WITHOUT WRITTEN PERMISSION OF BOSTON WHALER, INC.

DWG. NO:
11201

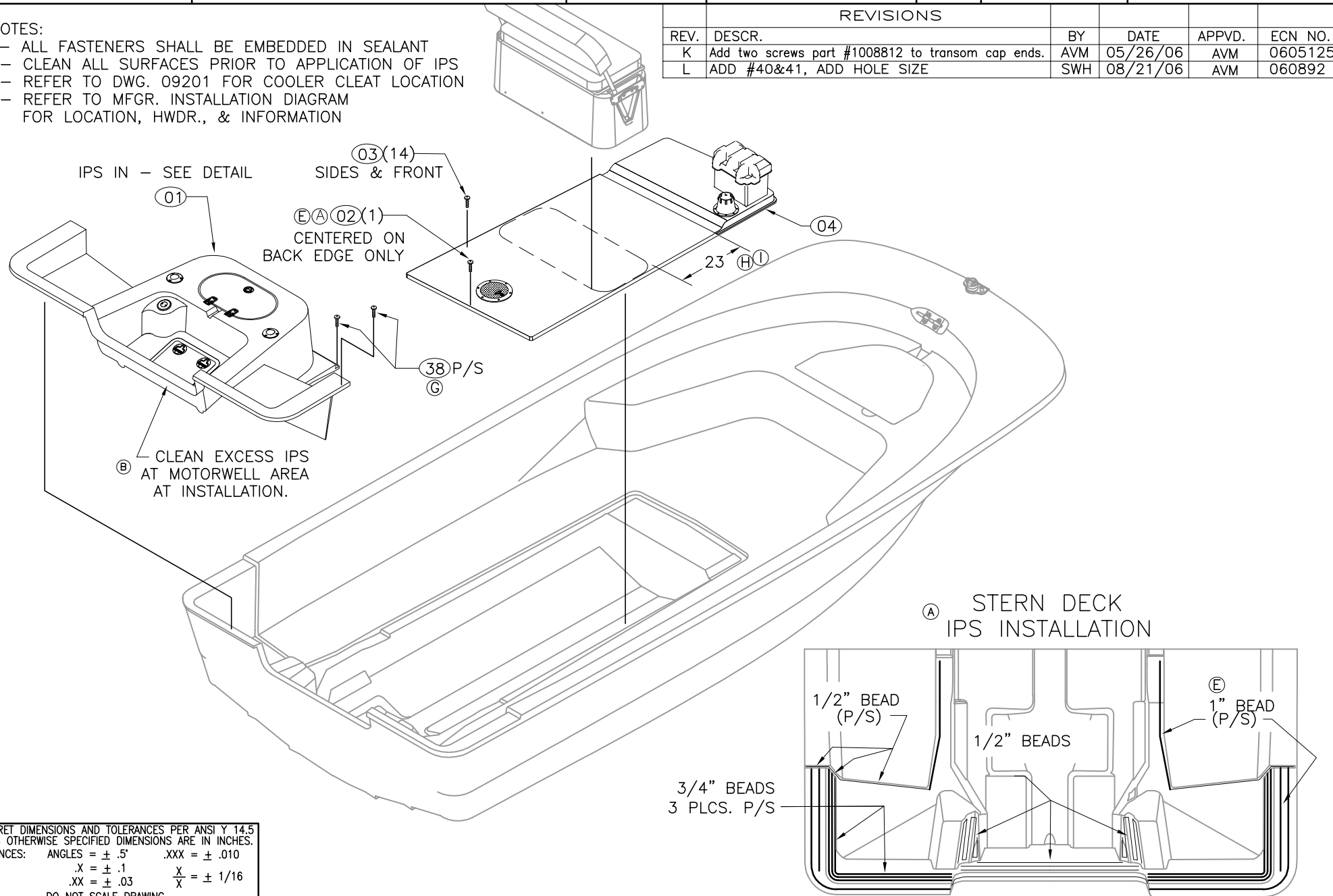
REV.
L

CURRENT ECD
060892

NOTES:

- 1- ALL FASTENERS SHALL BE EMBEDDED IN SEALANT
- 2- CLEAN ALL SURFACES PRIOR TO APPLICATION OF IPS
- 3- REFER TO DWG. 09201 FOR COOLER CLEAT LOCATION
- 4- REFER TO MFRG. INSTALLATION DIAGRAM FOR LOCATION, HWDR., & INFORMATION

REVISIONS					
REV.	DESCR.	BY	DATE	APPVD.	ECN NO.
K	Add two screws part #1008812 to transom cap ends.	AVM	05/26/06	AVM	0605125
L	ADD #40&41, ADD HOLE SIZE	SWH	08/21/06	AVM	060892



INTERPRET DIMENSIONS AND TOLERANCES PER ANSI Y 14.5 UNLESS OTHERWISE SPECIFIED DIMENSIONS ARE IN INCHES.
 TOLERANCES: ANGLES = ± .5° .XXX = ± .010
 .X = ± .1 X = ± 1/16
 .XX = ± .03 X = ± 1/16
 DO NOT SCALE DRAWING



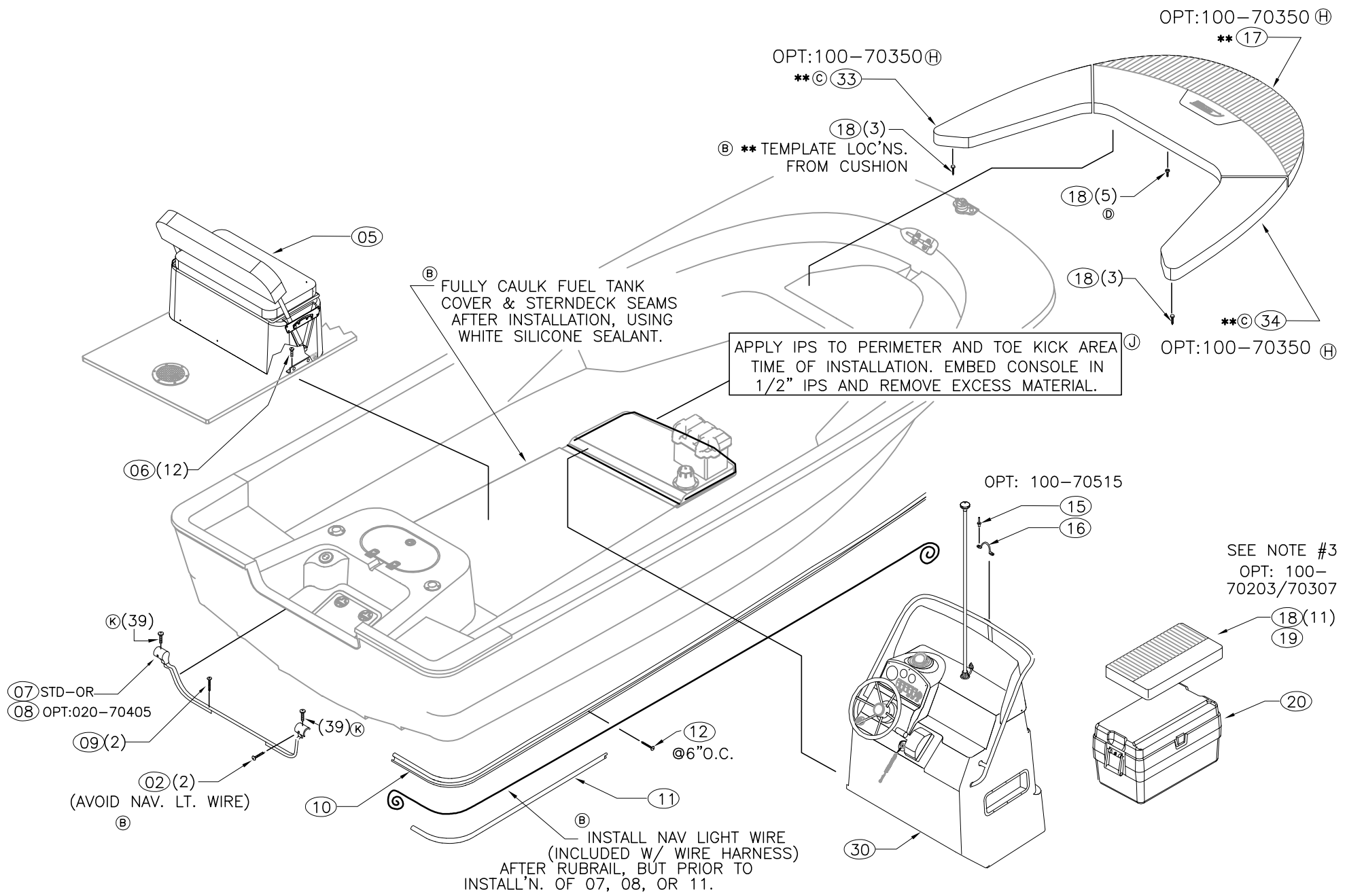
CHECKED: RA	DATE: 1-13-06	DRAWN: S HIESTER	DATE: 01/06/06	SCALE:	BOAT MODEL	MOLD NO.
APPD: K. R.	DATE: 1-13-06	DWG. TITLE: FINAL ASSY			190MT06	
DESIGN: V.P.K.	DATE: 1-13-06				INIT. REL. ECN NO:	DWG. NO:
INT. ENG: M.G.	DATE: 1-13-06				051039	11201
					SHT. NO.	1 OF 4

THIS DOCUMENT IS THE PROPERTY OF BOSTON WHALER, INC. MFG. DEPT., EDGEWATER, FLORIDA. ALL RIGHTS ARE RESERVED. THIS DOCUMENT AND INFORMATION CONTAINED MUST NOT BE COPIED OR DISCLOSED TO OTHERS WITHOUT WRITTEN PERMISSION OF BOSTON WHALER, INC.

DWG. NO:
11201

REV.
L

CURRENT ECD
060892



INTERPRET DIMENSIONS AND TOLERANCES PER ANSI Y 14.5 UNLESS OTHERWISE SPECIFIED DIMENSIONS ARE IN INCHES.
 TOLERANCES: ANGLES = ± .5° .XXX = ± .010
 .X = ± .1 .XX = ± .03 X = ± 1/16
 DO NOT SCALE DRAWING

DRAWN: S HIESTER DATE: 01/06/06 SCALE:
 DWG. TITLE: FINAL ASSY

BOAT MODEL: 190MT06
 INIT. REL. ECN NO: 051039

MOLD NO.
 DWG. NO: 11201

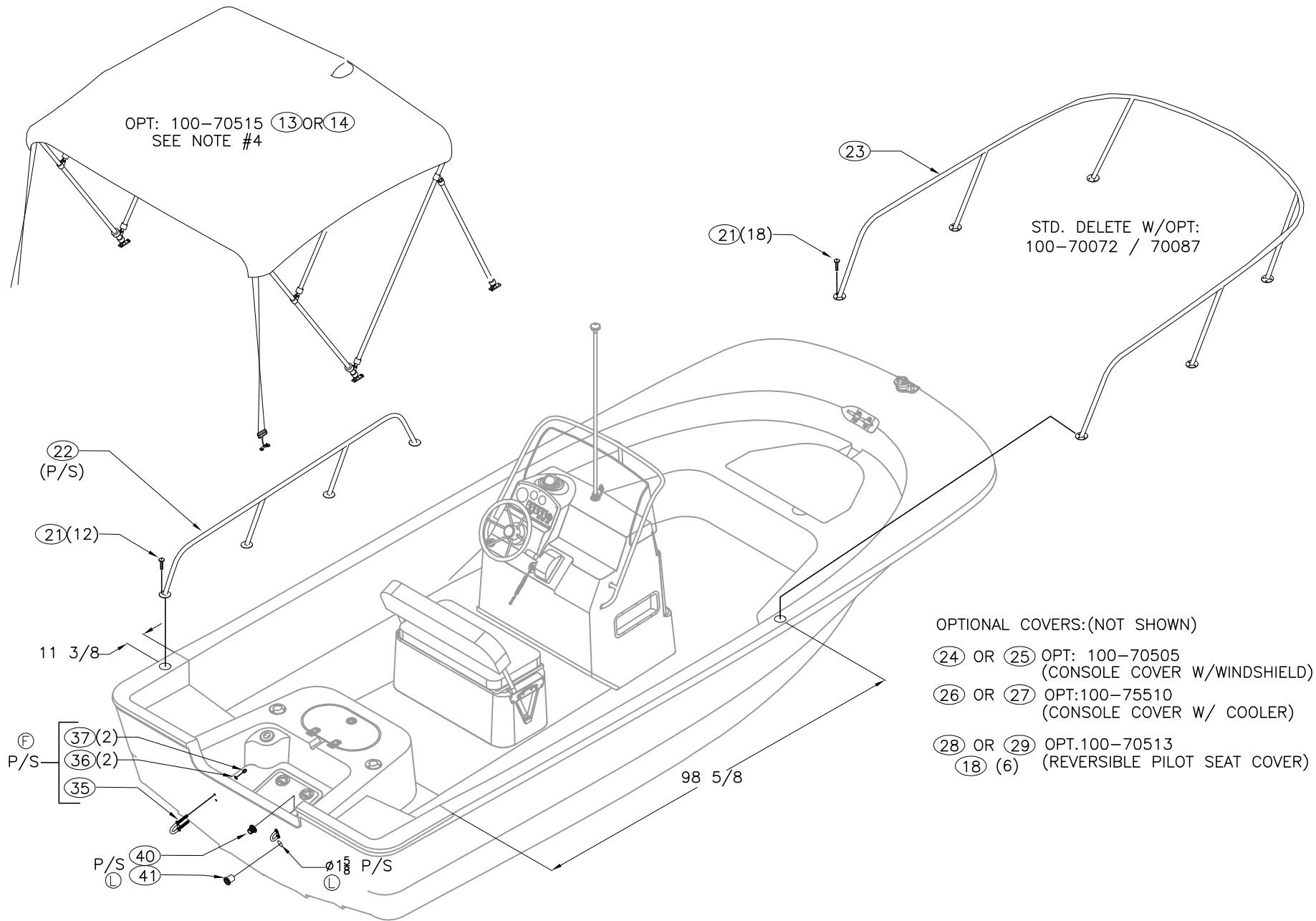
SHT. NO. 2 OF 4

THIS DOCUMENT IS THE PROPERTY OF BOSTON WHALER, INC. MFG. DEPT., EDGEWATER, FLORIDA. ALL RIGHTS ARE RESERVED. THIS DOCUMENT AND INFORMATION CONTAINED MUST NOT BE COPIED OR DISCLOSED TO OTHERS WITHOUT WRITTEN PERMISSION OF BOSTON WHALER, INC.

DWG. NO:
11201

REV.
L

CURRENT ECD
060892



OPTIONAL COVERS:(NOT SHOWN)

- (24) OR (25) OPT: 100-70505 (CONSOLE COVER W/WINDSHIELD)
- (26) OR (27) OPT: 100-75510 (CONSOLE COVER W/ COOLER)
- (28) OR (29) OPT: 100-70513 (REVERSIBLE PILOT SEAT COVER)
- (18) (6)



INTERPRET DIMENSIONS AND TOLERANCES PER ANSI Y 14.5 UNLESS OTHERWISE SPECIFIED DIMENSIONS ARE IN INCHES.
 TOLERANCES: ANGLES = ± .5° .XXX = ± .010
 .X = ± .1 X = ± 1/16
 .XX = ± .03

DO NOT SCALE DRAWING

DRAWN: S HIESTER

DATE: 01/06/06

SCALE:

BOAT MODEL
190MT06

MOLD NO.

DWG. TITLE:

FINAL ASSY

INIT. REL. ECN NO:
051039

DWG. NO:
11201

SHT. NO.

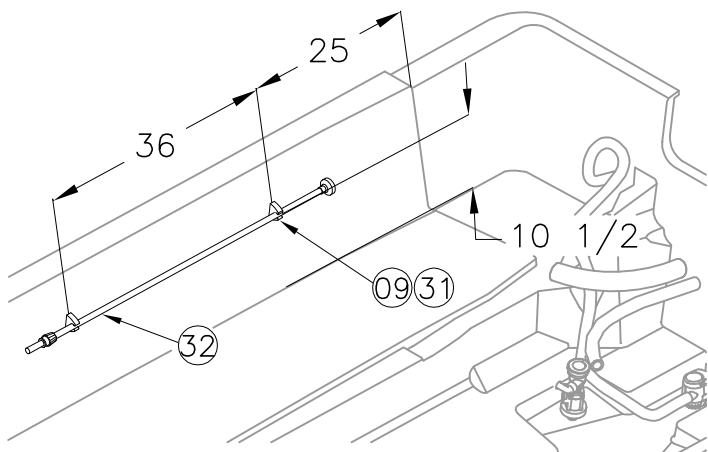
3 OF 4

THIS DOCUMENT IS THE PROPERTY OF BOSTON WHALER, INC. MFG. DEPT., EDGEWATER, FLORIDA. ALL RIGHTS ARE RESERVED. THIS DOCUMENT AND INFORMATION CONTAINED MUST NOT BE COPIED OR DISCLOSED TO OTHERS WITHOUT WRITTEN PERMISSION OF BOSTON WHALER, INC.

DWG. NO:
11201

REV.
L

CURRENT ECD
060892



ITEM	QNT		U/M	PARTS LIST		B.W.I. NO
	STD	OPT		DESCRIPTION		
1	1	-	EA.		STERN DECK SUB-ASSY	09-101
(A) 2	3	-	EA.		SCREW, TAPPING #10A X 1.5" PTH SC	1008747
3	14	-	EA.		SCREW, TAPPING #10A X 2" PTH SC	1008754
4	1	-	EA.		FUEL TANK COVER SUB-ASSY	09-301
5	1	-	EA.		REVERSIBLE PILOT SEAT SUB-ASSY	09-251
6	12	-	EA.		SCREW, MACHINE #1/4-20 X 1.5" PPH SC	1008598
7	1	-	EA.		CAP, RUBRAIL BW190MT-06 TRNSM TRIM W/NOTCH	1816448
8	-	1	EA.		CAP, RUBRAIL BW190MT-06 TRNSM TRIM	1816449
9	4	-	EA.		SCREW, TAPPING #10A X 1" PTH SC	1008739
10	1	-	EA.		INSERT, RUB RAIL CHAR FLEX 54'	1020841
11	1	-	EA.		RUBRAIL, PLASTIC CHAR 54'	1312487
12	60	-	EA.		SCREW, TAP #10A X 1.5" W/STP EPXY ORNG PFH SC	1814515
13	-	1	EA.		CANVAS, BW190MT-06 BIM TOP W/BOOT BLK	1816395
14	-	1	EA.		CANVAS, BW190MT-06 BIM TOP W/BOOT BLUE	1816396
15	-	2	EA.		RIVET, POP/BLIND #3/16 X 3/8" SS	0192120
16	-	1	EA.		EYE, STRAP EYE TIE-DOWN 5/16" CHR/ZINC	0861120
17	-	1	EA.		CUSH, BW190MT-06 BOW	1816393
(D)(C) 18	-	28	EA.		SNAP STUD, W/#8 X 3/8" PH BR/NI/SS	0203786
19	-	1	EA.		CUSH, BW190MT-06 COOLER SEAT 72QT	1819928
20	-	1	EA.		COOLER, 72QT WHT	1016427
21	42	-	EA.		SCREW, MACHINE #1/4-20 X 1" PPH SC	1008580
22	2	-	EA.		RAIL, SIDE BW170MT-02 AFT	1689429
23	1	-	EA.		RAIL, BOW BW190MT-06 SS	1816363
24	-	1	EA.		CANVAS, BW190MT-06 CNSL CVR BLK	1816397
25	-	1	EA.		CANVAS, BW190MT-06 CNSL CVR BLUE	1816398
26	-	1	EA.		CANVAS, BW190MT-06 CNSL CVR W/COOLER BLK	1816399
27	-	1	EA.		CANVAS, BW190MT-06 CNSL CVR W/COOLER BLUE	1816400
28	-	1	EA.		CANVAS, BW180/220DA-05 REV'BL SEAT CVR BLK	1771132
29	-	1	EA.		CANVAS, BW180/220DA-05 REV'BL SEAT CVR BLUE	1771133
30	1	-	EA.		CONSOLE SUB-ASSY	09-201
31	1	-	PR.		CLIP, POLE STRG BLK - MAST LIGHT	0590646
32	1	-	EA.		LIGHT, NAV A/R STERN 52" N/BEND	0574400
(C) 33	-	1	EA.		CUSH, BW190MT-06 BOW PRT	1833208
(C) 34	-	1	EA.		CUSH, BW190MT-06 BOW STB	1833209
(F) 35	2	-	EA.		EYE, BOW 1/2" X 3 3/4" SS	1835882
(F) 36	4	-	EA.		WASHER, LOCK/SPLIT 1/2" SC	1326214
(F) 37	4	-	EA.		NUT, ACORN #1/2-13 SC	1662402
(G) 38	4	-	EA.		SCREW, TAPPING #10A X 1.5" PFH SC	1010248
(K) 39	2	-	EA.		SCREW, TAPPING #8 X 1/2" PTH	1008812
(L) 40	2	-	EA.		THRU-HULL, MARELON BW-06 LONG MALE	1806030
(L) 41	2	-	EA.		THRU-HULL, MARELON BW-06 SHORT FEMALE	1806032



INTERPRET DIMENSIONS AND TOLERANCES PER ANSI Y 14.5 UNLESS OTHERWISE SPECIFIED DIMENSIONS ARE IN INCHES.
 TOLERANCES: ANGLES = ± .5° .XXX = ± .010
 .X = ± .1 X = ± 1/16
 .XX = ± .03 X = ± 1/16
 DO NOT SCALE DRAWING

DRAWN: S HIESTER

DATE: 01/06/06

SCALE:

BOAT MODEL

MOLD NO.

DWG. TITLE:

FINAL ASSY

190MT06

INIT. REL. ECN NO:

DWG. NO:

051039

11201

SHT. NO.

4 OF 4