

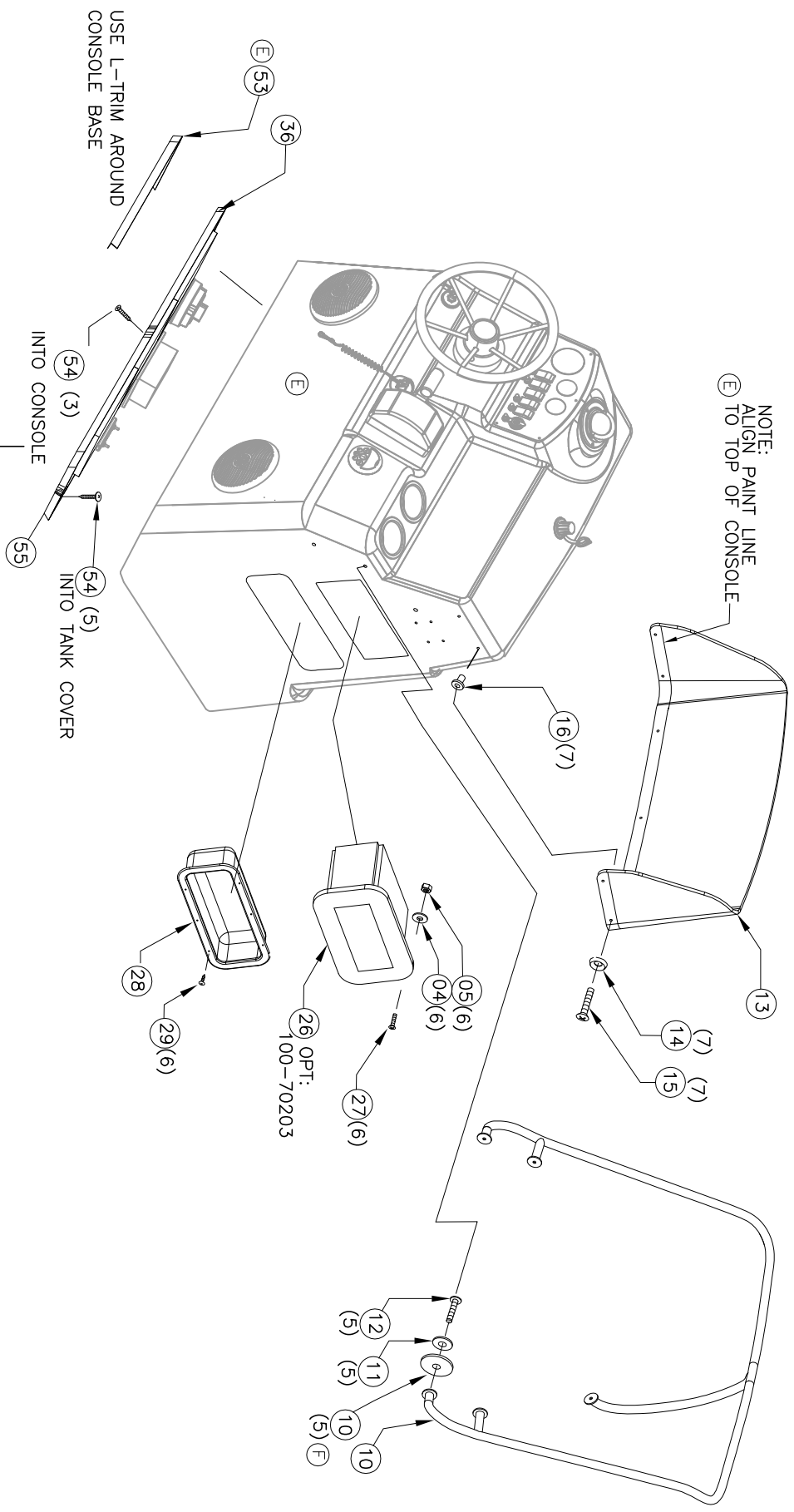


THIS DOCUMENT IS THE PROPERTY OF BOSTON WHALER, INC. MFG. DEPT., EDGEWATER, FLORIDA. ALL RIGHTS ARE RESERVED. THIS DOCUMENT AND INFORMATION CONTAINED MUST NOT BE COPIED OR DISCLOSED TO OTHERS WITHOUT WRITTEN PERMISSION OF BOSTON WHALER, INC.

DWG. NO:  
09201

REV.  
W

CURRENT ECD  
08055218



INTERPRET DIMENSIONS AND TOLERANCES PER ANSI Y 14.5 UNLESS OTHERWISE SPECIFIED DIMENSIONS ARE IN INCHES.  
TOLERANCES:  
ANGLES = ± .5°  
X = ± .1  
XX = ± .03  
X/2 = ± 1/16  
DO NOT SCALE DRAWING

DRAWN: J. HALPIN DATE: 01/04/06 SCALE: NONE  
DWG. TITLE:  
CONSOLE SUB-ASSY.

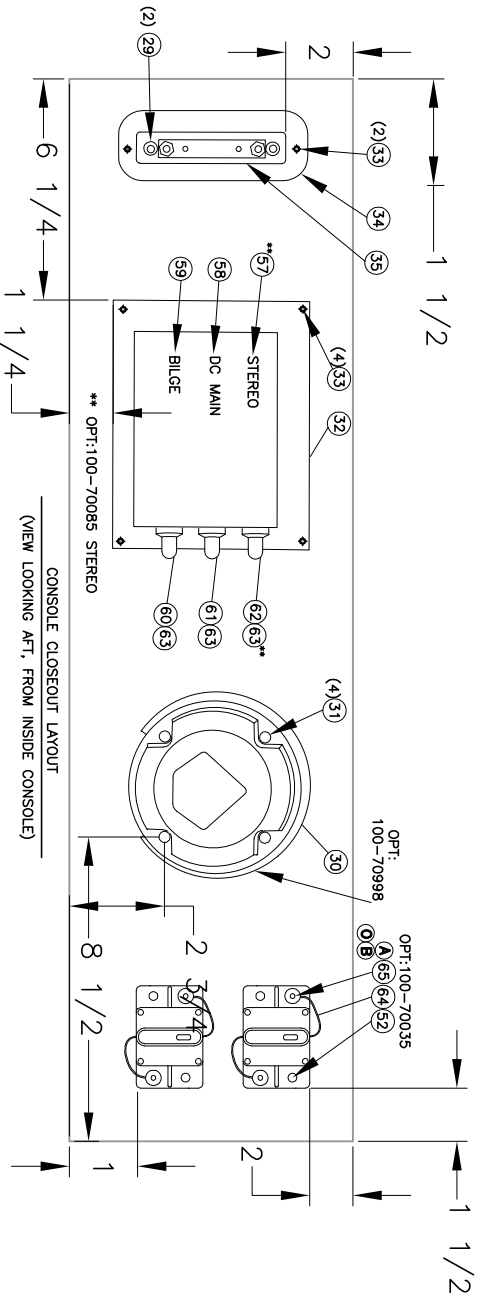
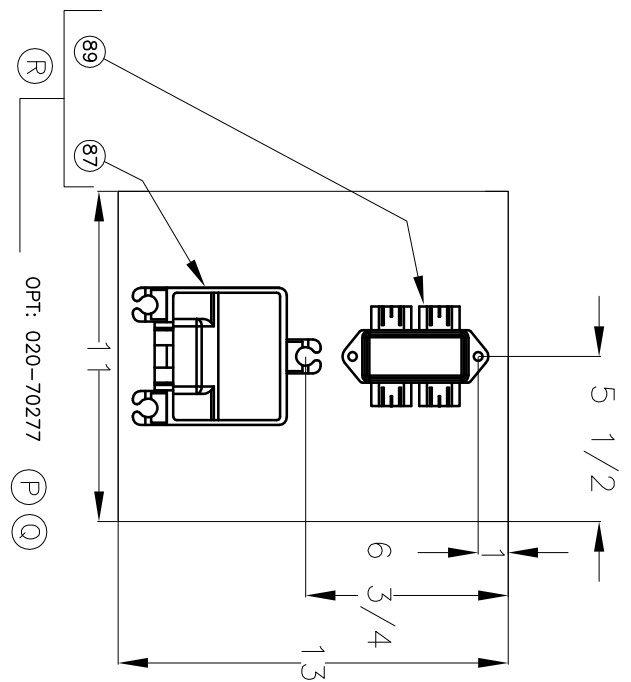
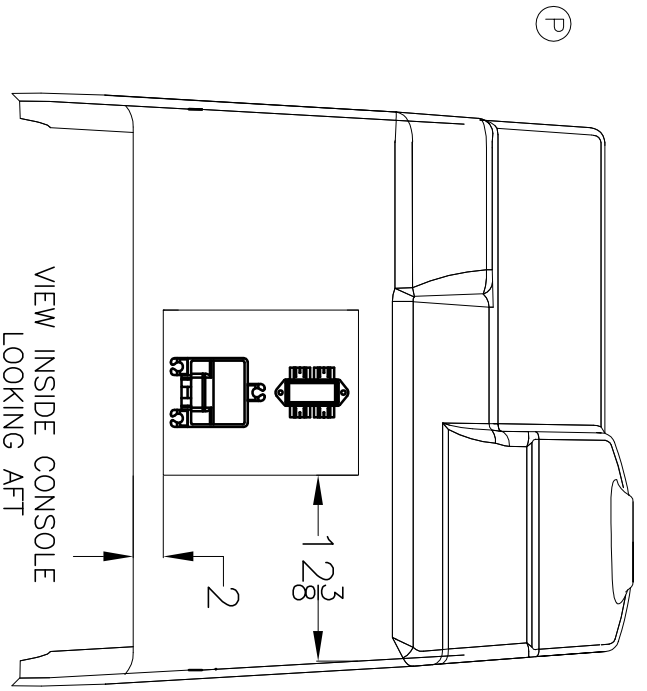
BOAT MODEL: 190MT  
MOLD NO.: 22K26800  
INIT. REL. EGN NO.: 051039  
DWG. NO.: 09201  
SHT. NO.: 2 OF 7

THIS DOCUMENT IS THE PROPERTY OF BOSTON WHALER, INC. MFG. DEPT., EDGEWATER, FLORIDA. ALL RIGHTS ARE RESERVED. THIS DOCUMENT AND INFORMATION CONTAINED MUST NOT BE COPIED OR DISCLOSED TO OTHERS WITHOUT WRITTEN PERMISSION OF BOSTON WHALER, INC.

DWG. NO:  
09201

REV.  
W

CURRENT ECD  
08055218



INTERPRET DIMENSIONS AND TOLERANCES PER ANSI Y 14.5 UNLESS OTHERWISE SPECIFIED DIMENSIONS ARE IN INCHES. TOLERANCES:  
 ANGLES = ± .5°  
 X = ± .1  
 XX = ± .03  
 XXX = ± .010  
 X/4 = ± 1/16  
 DO NOT SCALE DRAWING

DRAWN: J. HALPIN DATE: 01/04/06 SCALE: NONE  
 DWG. TITLE: CONSOLE SUB-ASSY.

BOAT MODEL 190MT MOLD NO. 22K26800  
 INT. REL. ECN NO.: 051039 DWG. NO.: 09201

SHT. NO. 3 OF 7



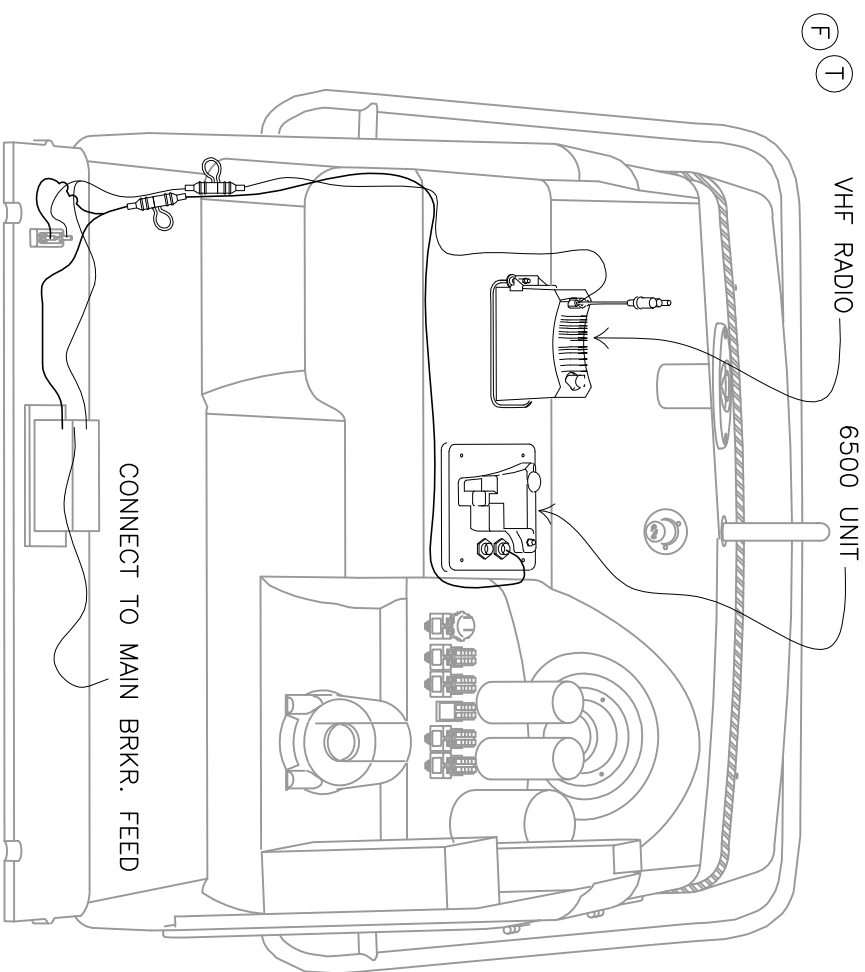
THIS DOCUMENT IS THE PROPERTY OF BOSTON WHALER, INC. MFG. DEPT., EDGEWATER, FLORIDA. ALL RIGHTS ARE RESERVED. THIS DOCUMENT AND INFORMATION CONTAINED MUST NOT BE COPIED OR DISCLOSED TO OTHERS WITHOUT WRITTEN PERMISSION OF BOSTON WHALER, INC.

DWG. NO:  
09201

REV.  
W

CURRENT ECD  
08055218

OPT: 100-70453



NOTE-- ALL WIRES TOP BE PROTECTED BY LOOM



INTERPRET DIMENSIONS AND TOLERANCES PER ANSI Y 14.5 UNLESS OTHERWISE SPECIFIED DIMENSIONS ARE IN INCHES. TOLERANCES: ANGLES = ± .5°  
X = ± .1  
XX = ± .03  
X/2 = ± 1/16  
DO NOT SCALE DRAWING

DRAWN: J. HALPIN DATE: 01/04/06 SCALE: NONE  
DWG. TITLE: CONSOLE SUB-ASSY.

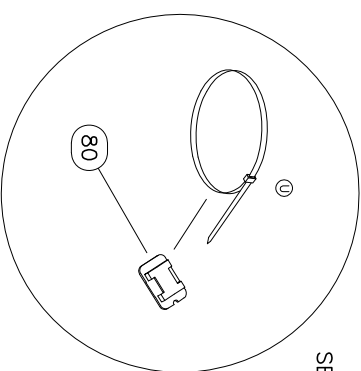
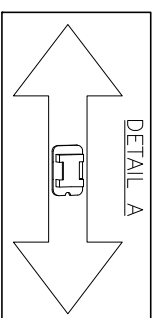
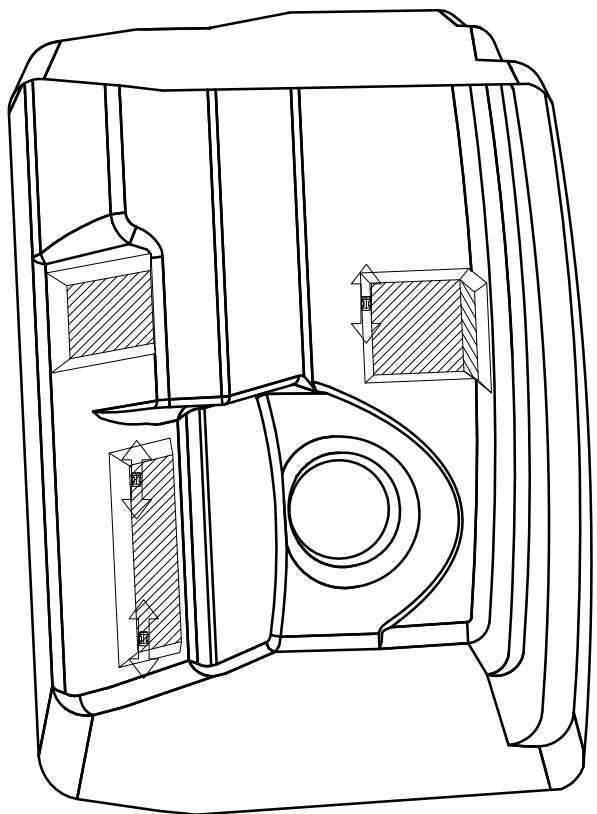
BOAT MODEL 190MT  
MOLD NO. 22K26800  
INT. REL. EGN NO: 051039  
DWG. NO: 09201

SHT. NO. 5 OF 7

THIS DOCUMENT IS THE PROPERTY OF BOSTON WHALER, INC. MFG. DEPT., EDGEWATER, FLORIDA. ALL RIGHTS ARE RESERVED. THIS DOCUMENT AND INFORMATION CONTAINED MUST NOT BE COPIED OR DISCLOSED TO OTHERS WITHOUT WRITTEN PERMISSION OF BOSTON WHALER, INC.

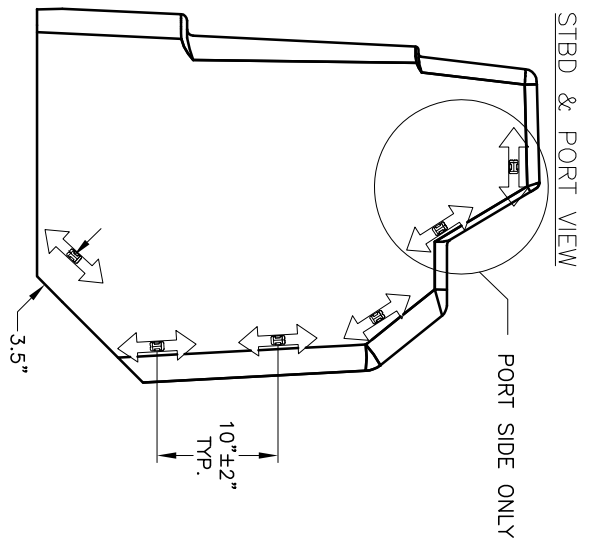
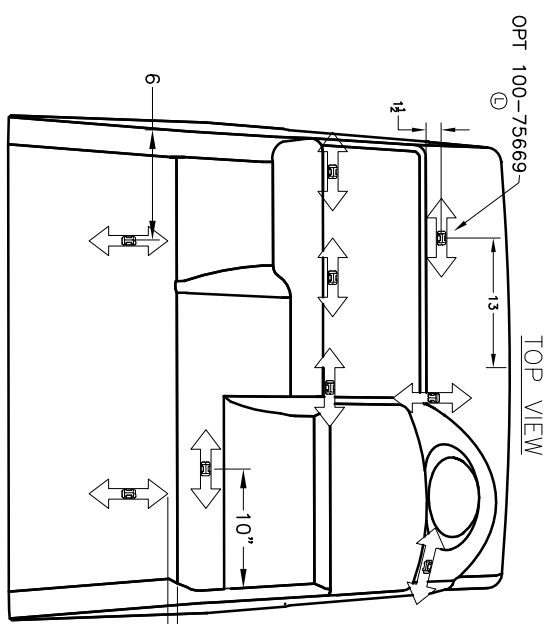
DWG. NO:  
09201

REV. W  
CURRENT ECD  
08055218



SEE DWG. 01-300 TIE  
CABLES P/N  
& STANDARDS.

NOTE:  
5. LOCATE WIRE TIE 1/2" AWAY FROM ALL RADDS  
6. PRESS WIRE TIES INTO POSITION



PORT SIDE ONLY

OPT 100-75669

TOP VIEW

STBD & PORT VIEW



INTERPRET DIMENSIONS AND TOLERANCES PER ANSI Y 14.5 UNLESS OTHERWISE SPECIFIED DIMENSIONS ARE IN INCHES.  
TOLERANCES:  
ANGLES = ± .5°  
X = ± .1  
XX = ± .03  
XX = ± 1/16  
DO NOT SCALE DRAWING

DRAWN: J. HALPIN  
DATE: 01/04/06  
SCALE: NONE  
CONSOLE SUB-ASSY.

BOAT MODEL  
190MT  
MOLD NO.  
22K26800  
INIT. REL. ECN NO.:  
051039  
DWG. NO.:  
09201

SHT. NO.  
6 OF 7

THIS DOCUMENT IS THE PROPERTY OF BOSTON WHALER, INC. MFG. DEPT., EDGEWATER, FLORIDA. ALL RIGHTS ARE RESERVED. THIS DOCUMENT AND INFORMATION CONTAINED MUST NOT BE COPIED OR DISCLOSED TO OTHERS WITHOUT WRITTEN PERMISSION OF BOSTON WHALER, INC.

DWG. NO: 09201  
 REV: W  
 CURRENT ECD: 08055218

PARTS LIST

ITEM	QTY	U/M	DESCRIPTION	B.W.I. NO.
1	EA.		HELM CONSOLE	22K26800
2	1	EA.	HOLDER, HDPE-BW190MT-04-00GLER	17566290
3	6	EA.	SCREW, MACHINE #10-24 X 1.75" PTH SC	1341973
4	33	EA.	WASHER, FLAT #10 SC	1260751
5	33	EA.	NUT, HEX NYLON LOCK #10-24 SC	1007772
6	1	EA.	ROD HOLDER, BW190MT-02 4-RD ASSY	1690318
7	1	EA.	HORN, SGL CONCEALED W/SS GRILL/CONN	1837054
8	1	EA.	HORN, GRILL SGL SS OVERLAY SERIES 8440-1	1784252
9	5	EA.	WASHER, FENDER 5/16" X 1.5" SC	1326180
10	1	EA.	RAIL, GRAB BW190MT-06 CNSL SS	1818946
11	5	EA.	WASHER, LOCK/SPLIT 5/16" SC	1260611
12	5	EA.	SCREW, CAP #5/16-18 X 1.25" HEX HD SC	1742748
13	1	EA.	W/S, BW190MT-06 CNSL CLEAR	1818945
14	7	EA.	WASHER, FINISH #10 SS	0896258
15	7	EA.	SCREW, MACHINE #10-32 x 1-1/4" PTH SC	1010107
16	7	EA.	NUT, WELL 10-32	1033422
17	2	EA.	STRAP, GOOGLER-TAMER 7" CNSL-MNT	1741635
18	1	EA.	EMBLEM, BW STEERING WHEEL CAP	1021054
19	1	EA.	STEERING WHEEL, 15" DIA SS 25DEG	1020197
20	1	EA.	STEERING BEZEL, 90 DEG SGL	0626150
21	1	EA.	STEERING, HELM NFB SGL	0626143
22	4	EA.	SCREW, TAPPING # 10 X 1" PTH SC	1008739
23	1	EA.	CONTROL, CNSL MNT SGL N/HARNESS 4000 GEN II	1752911
24	2	EA.	SCREW, TAPPING #8 X 1" PTH SC	1213065
25	1	EA.	AOC PART, MERC SW (SAFETY ASSY)	0882605
26	1	EA.	BOX, PLAS BW-04 TACKLE 2-DRWR WHT	1761591
27	6	EA.	SCREW, MACHINE #10-24 X 3/4" PTH SC	1008705
28	1	EA.	BOX, ABS FIRE EXT SHORT WHT	1037555
29	14	EA.	SCREW, TAPPING #8 x 5/8" PTH SC	1010925
30	1	EA.	SWITCH, BATTERY ON/OFF W/O LOCK W/O DISC	0162701
31	4	EA.	SCREW, TAPPING #10A X 1.5" PTH SC	1008747
32	1	EA.	BOX, ABS HARNESS	1037530
33	6	EA.	SCREW, TAPPING #8 x 1/2" PTH SC	1008812
34	1	EA.	COVER, ABS BW MINIBUSS BLK	1185016
35	1	EA.	BUSS BAR, MINIBUSS BAR DC	1324334
36	1	EA.	KICK PLATE, CONSOLE	22-K276-00
37	1	EA.	DOOR, HDPE BW190MT-06 CNSL	1816373
38	1	EA.	PANEL, HDPE BW190MT-06 CLOSEOUT STEREO	1816379
39	4	EA.	SCREW, MACHINE #10-24 X 4" PTH SC	1812435
40	13	EA.	SCREW, MACHINE #10-24 x 1.25" PTH SC	1008424
41	1	EA.	STEREO, AM/FM CD/CHNGR/SIR/XM SAT CMD5	1890355
42	1	EA.	STEREO, REMOTE CNTRL W/DIG DPLRY FOR CMD4 BLK	1803894
43	1	EA.	PANEL, BW190MT-09 MERC ANALOG W/SW	1944484
44	1	EA.	PANEL, BLANK-BW190MT-09 W/SW	1944483

ITEM	QTY	U/M	DESCRIPTION	B.W.I. NO.
45	1	EA.	COMPASS, FLSHMT 3 7/8" BLK WT HSE/GREEN LT	1791615
46	6	EA.	SCREW, TAPPING #6 x 3/4" PTH SC	1008564
47	1	EA.	LIGHT, NAV STERN BASE RND CHR.	0331751
48	1	EA.	LIGHT, NAV A/R STERN 54" N/BEND	1691343
49	1	EA.	SWITCH, IGN ASSY 4-POSITION W/HOUSING	1801954
50	-	FT.	HOSE, PVC CLEAR 3/8"	0124347
51	2	EA.	DRINKHOLDER, PLAS W/DRAIN DEEP XLG SZ BLK	1727419
52	4	EA.	SCREW, TAPPING #10A X 3/4" PTH SC	1008762
53	5.2	FT.	MOLDING, VINYL "L" OFF-WHT W/ADH	1020924
54	8	EA.	SCREW, TAPPING #8 x 3/4" PTH SC	1008408
55	375	EA.	ADHESIVE, WELD-ON SS 214 2PART 470ML	1558485
56	2	EA.	SPEAKER, WELD-ON SS 214 2PART 470ML	1690555
57	1	EA.	LABEL, BW STEREO	1075266
58	1	EA.	LABEL, BW DC MAIN BREAKER	1075282
59	1	EA.	LABEL, BILGE (LEXAN)	1745123
60	1	EA.	BRKR, MANUAL RESET 15A	1750593
61	1	EA.	BRKR, P/BTN-MANUAL RESET 25A W/SCREW TER	0839969
62	1	EA.	BRKR, MANUAL RESET SA	0670497
63	3	EA.	BOOT, RESET BRKR CLR	1066547
64	2	EA.	BRKR, SURF MNT THERMAL 40AMP SWITCHABLE	1475433
65	4	EA.	BOOT, PVC TERM INSUL CAP RED	1689904
66	0	EA.	RECEPTACLE, 12 TROLLING MOTOR OPT	0803155
67	0	EA.	PLUG, 12V/24V (TROLLING MOTOR) W/12" LEADS	1835573
68	0	EA.	BOOT, PVC TERM INSUL CAP(487N9V62)RED	1803993
69	1	EA.	HOLDER, HDPE BW190MT-06 COOLER/DRINK PRT	1833426
70	1	EA.	HOLDER, HDPE BW190MT-06 COOLER/DRINK STB	1833427
71	2	EA.	COVER, ABS BW-97 SPKR 7 1/8"RAD WHT	1047836
72	8	EA.	SCREW, MACHINE #8-32 X 1" PTH SC	1010230
73	8	EA.	WASHER, FLAT #8 SC	1326297
74	8	EA.	NUT, ACONR #8-32 SC	1752458
75	1	EA.	VIDEO EQUIPMENT, AUXILIARY INPUT MA-AUX2	1850253
76	1	EA.	CABLE, RCA AUDIO 6' W/EFX-2 CONN W/NOISE SUPP	1750280
77	2	EA.	ADAPTER, STEREO FEMALE/FEMALE	0956078
78	1	EA.	HEAT SHRINK, TUBING RED 3/4" X 6"	1042274
79	1	EA.	HEAT SHRINK, TUBING BLK 3/4" X 6"	0999939
80	22	EA.	MOUNT, CABLE TIE	1790728
81	22	EA.	TIE, CABLE 6" LG NYLON-BLK	0999672
82	2	EA.	SCREW, TAPPING #10A X 1" PTH SC	1008507
83	1	EA.	PANEL, BW190MT-09 MERC S/CRT W/SW	1944485
84	1	EA.	STEERING, KIT REMOTE FILL MERC	1805452
85	1	EA.	CONTROL, CNSL MNT SLIM DTS N/HARNESS '06	1882337
86	1	EA.	STEERING, HELM PLMP MERC 25 CM3 TILT	1802535
87	1	EA.	AOC PART, MERC SLIM CNSL CMM KIT GEN I	1849604
88	1	EA.	PVG BOARD, 1/2" X 11" X 13" FOAMED	1805451
89	1	EA.	AOC PART, MERC S-CRT JUNG BOX 4-WAY	1507326
90	1	EA.	STEERING, HELM BAYSTAR (RV10/07)	1935734



INTERPRET DIMENSIONS AND TOLERANCES PER ANSI Y 14.5 UNLESS OTHERWISE SPECIFIED. DIMENSIONS ARE IN INCHES. TOLERANCES: ANGLES = ± .5°  
 X = ± .1  
 XX = ± .05  
 XXX = ± .010  
 X/2 = ± 1/16  
 DO NOT SCALE DRAWING

DRAWN: J. HALPIN  
 DATE: 01/04/06  
 SCALE: NONE

BOAT MODEL: 190MT  
 MOLD NO.: 22K26800  
 INT. REL. ECN NO.: 051039  
 DWG. NO.: 09201  
 SH. NO.: 7 OF 7

CONSOLE SUB-ASSY.