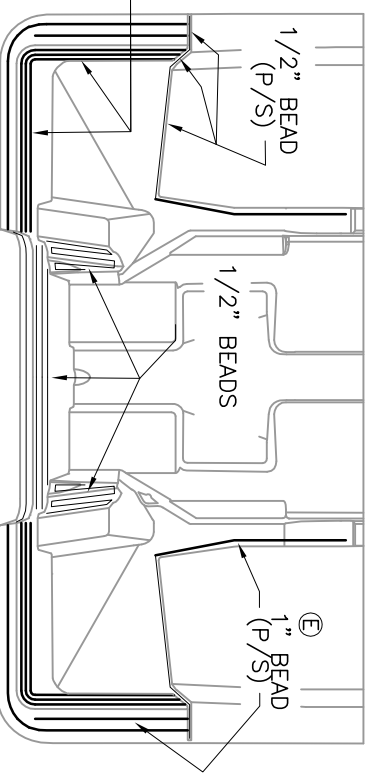
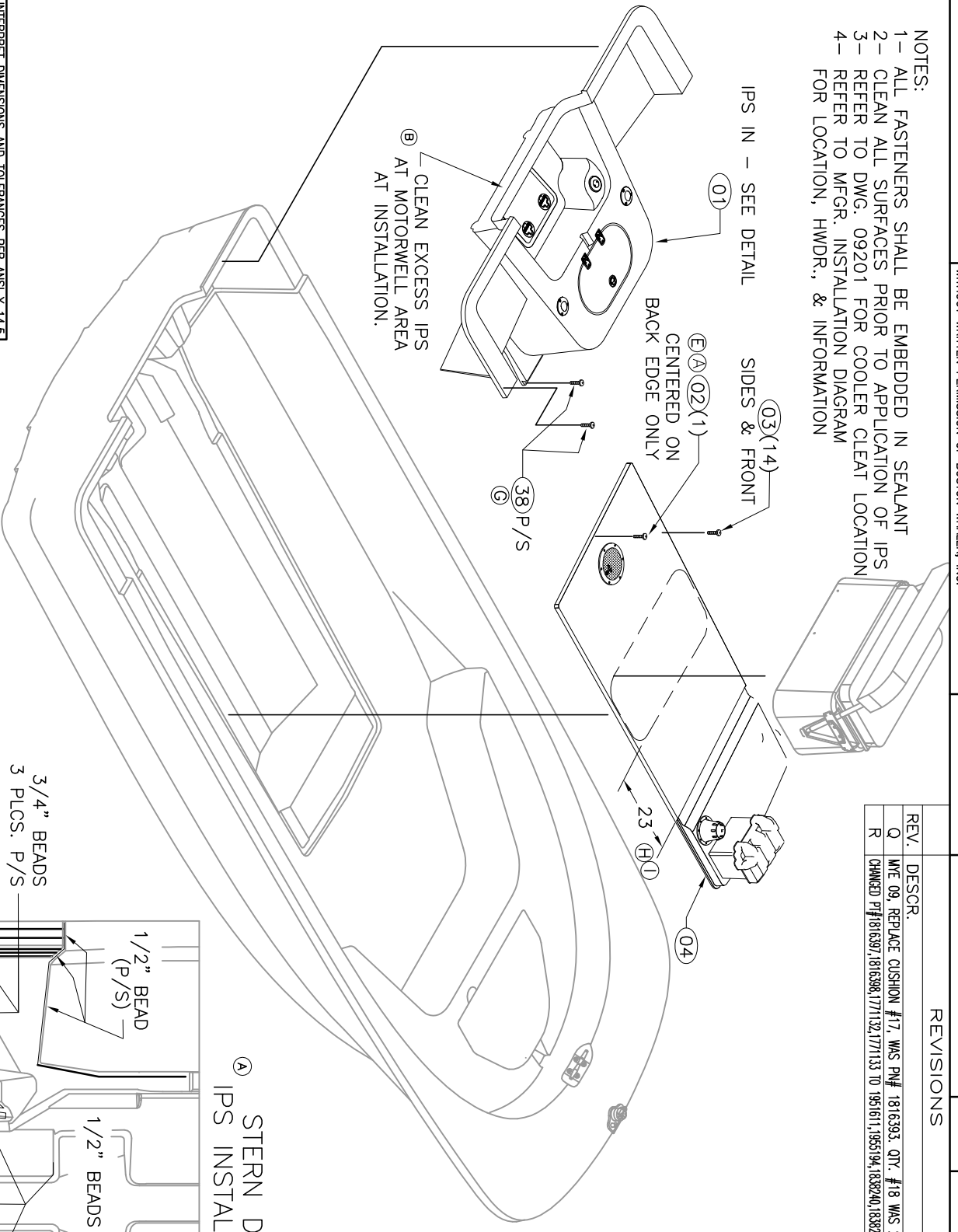


THIS DOCUMENT IS THE PROPERTY OF BOSTON WHALER, INC. MFG. DEPT., EDGEWATER, FLORIDA. ALL RIGHTS ARE RESERVED. THIS DOCUMENT AND INFORMATION CONTAINED MUST NOT BE COPIED OR DISCLOSED TO OTHERS WITHOUT WRITTEN PERMISSION OF BOSTON WHALER, INC.

DWG. NO: 11201
 REV. NO: R
 CURRENT ECD: 08085451

- NOTES:
- 1- ALL FASTENERS SHALL BE EMBEDDED IN SEALANT
 - 2- CLEAN ALL SURFACES PRIOR TO APPLICATION OF IPS
 - 3- REFER TO DWG. 09201 FOR COOLER CLEAR LOCATION
 - 4- REFER TO MFG. INSTALLATION DIAGRAM FOR LOCATION, HWD., & INFORMATION



08 STERN DECK
 09 IPS INSTALLATION

INTERPRET DIMENSIONS AND TOLERANCES PER ANSI Y 14.5
 UNLESS OTHERWISE SPECIFIED DIMENSIONS ARE IN INCHES.
 TOLERANCES: ANGLES = ± .5°
 .X = ± .1
 .XX = ± .03
 .XXX = ± .010
 X = ± 1/16
 DO NOT SCALE DRAWING

REV.	DESCR.	BY	DATE	APPVD.	ECN NO.
Q	MFG. 09. REPLACE CUSHION #17. WAS P/N# 1816393. QTY. #18 WAS 28	SLJ	07/28/08	DH	08075376
R	CHANGED P/N#1816393,1816398,177132,177133 TO 1951611,195194,1838240,1838242	TJ	9/15/08	AF	08085451

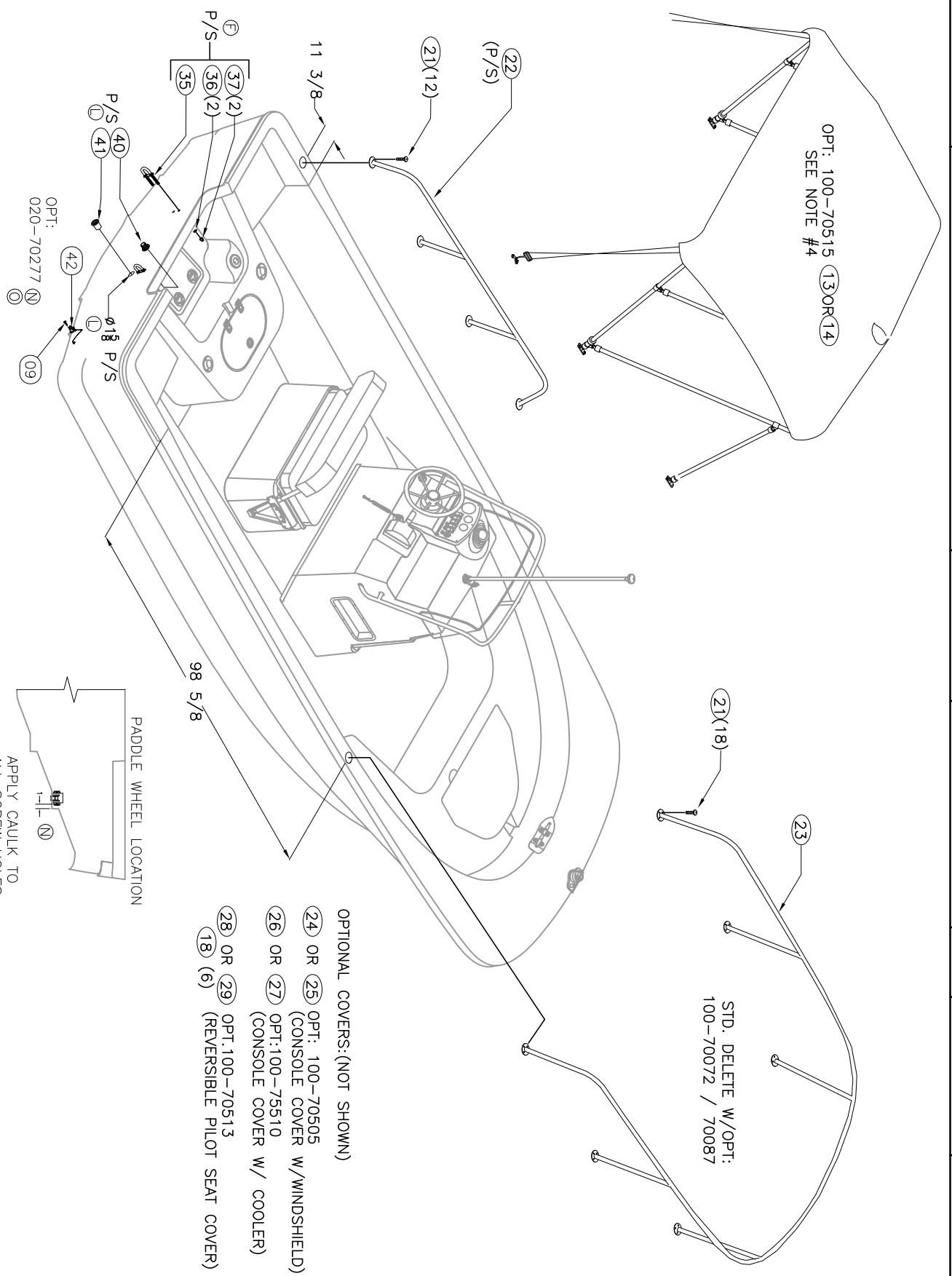
CHECKED: RA	DATE: 1-13-06	DRAWN: S HESTER	DATE: 01/06/06	SCALE:	BOAT MODEL: 190MT	MOLD NO.:
APPD: K. R.	DATE: 1-13-06	DWG. TITLE: FINAL ASSY			INT. REL. ECN NO: 051039	DWG. NO: 11201
DESIGN: V.P.K.	DATE: 1-13-06					SHT. NO. 1 OF 4
INT. ENG: M.G.	DATE: 1-13-06					



THIS DOCUMENT IS THE PROPERTY OF BOSTON WHALER, INC. MFG. DEPT., EDGEWATER, FLORIDA. ALL RIGHTS ARE RESERVED. THIS DOCUMENT AND INFORMATION CONTAINED MUST NOT BE COPIED OR DISCLOSED TO OTHERS WITHOUT WRITTEN PERMISSION OF BOSTON WHALER, INC.

DWG. NO:
11201

REV. R
CURRENT ECD
08085451



- OPTIONAL COVERS: (NOT SHOWN)
- (24) OR (25) OPT: 100-70505 (CONSOLE COVER W/WINDSHIELD)
 - (26) OR (27) OPT: 100-75510 (CONSOLE COVER W/ COOLER)
 - (28) OR (29) OPT: 100-70513 (REVERSIBLE PILOT SEAT COVER)
 - (18) (6)



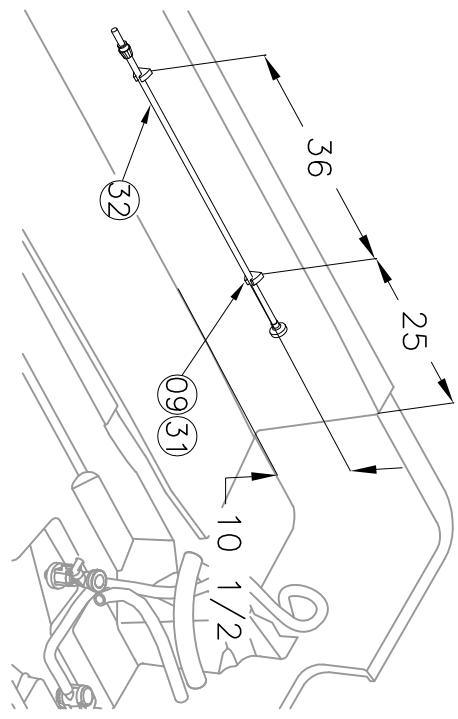
INTERPRET DIMENSIONS AND TOLERANCES PER ANSI Y 14.5 UNLESS OTHERWISE SPECIFIED DIMENSIONS ARE IN INCHES.
TOLERANCES:
X = ± .1
XX = ± .03
X/2 = ± 1/16
DO NOT SCALE DRAWING

DRAWN: S HESTER
DATE: 01/06/06
SCALE:
DWG. TITLE:
FINAL ASSY

BOAT MODEL: 190MT
MOLD NO.:
INIT. REL. ECN NO.: 051039
DWG. NO.: 11201
SHT. NO.: 3 OF 4

THIS DOCUMENT IS THE PROPERTY OF BOSTON WHALER, INC. MFG. DEPT., EDGEWATER, FLORIDA. ALL RIGHTS ARE RESERVED. THIS DOCUMENT AND INFORMATION CONTAINED MUST NOT BE COPIED OR DISCLOSED TO OTHERS WITHOUT WRITTEN PERMISSION OF BOSTON WHALER, INC.

DWG. NO: 11201
 REV: R
 CURRENT ECD 08085451



ITEM	QNT	STD	OPT	U/M	PARTS LIST DESCRIPTION	B.W.I. NO
1	1	-	-	EA.	STERN DECK SUB-ASSY	09-101
2	3	-	-	EA.	SCREW, TAPPING #10A X 1.5" PTH SC	1008747
3	14	-	-	EA.	SCREW, TAPPING #10A X 2" PTH SC	1008754
4	1	-	-	EA.	FUEL TANK COVER SUB-ASSY	09-301
5	1	-	-	EA.	REVERSIBLE PILOT SEAT SUB-ASSY	09-251
6	12	-	-	EA.	SCREW, MACHINE #1/4-20 X 1.5" PPH SC	1008598
7	1	-	-	EA.	CAP, RUBRAL BW190MT-06 TRNSM TRIM W/NOTCH	1816448
8	-	-	-	EA.	CAP, RUBRAL BW190MT-06 TRNSM TRIM	1816449
9	4	-	-	EA.	SCREW, TAPPING #10A X 1" PTH SC	1008739
10	1	-	-	EA.	INSERT, RUB RAIL CHAR FLEX 54'	1020841
11	1	-	-	EA.	RUBRAL, PLASTIC CHAR 54'	1312487
12	60	-	-	EA.	SCREW, TAP #10A X 1.5" W/STP EPXY ORNG PTH SC	1814515
13	-	-	-	EA.	CANVAS, BW18DNT/190MT-08 BIM TOP W/BOOT BLK	1878180
14	-	-	-	EA.	CANVAS, BW18DNT/190MT-08 BIM TOP W/BOOT BLUE	1878179
15	-	-	-	EA.	RIVET, POP/BLIND #3/16 X 3/8" SS	0192120
16	-	-	-	EA.	EYE, STRAP EYE TIE-DOWN 5/16" CHR/ZINC	0861120
17	-	-	-	EA.	CUSH, BW190MT-09 BOW	1950808
18	-	-	-	EA.	SNAP STUD, W/#8 X 3/8" PH BR/NI/SS	0203786
19	-	-	-	EA.	CUSH, BW190MT-06 COOLER SEAT 72QT	1819928
20	-	-	-	EA.	COOLER, 72QT WHT	1016427
21	42	-	-	EA.	SCREW, MACHINE #1/4-20 X 1" PPH SC	1008580
22	2	-	-	EA.	RAIL, SIDE BW170MT-02 AFT	1689429
23	1	-	-	EA.	RAIL, BOW BW190MT-06 SS	1816363
24	-	-	-	EA.	CANVAS, 190MT-09 CNSL CVR BLK	1951611
25	-	-	-	EA.	CANVAS, 190MT CNSL CVR BLUE	1951794
26	-	-	-	EA.	CANVAS, BW190MT-06 CNSL CVR W/COOLER BLK	1816399
27	-	-	-	EA.	CANVAS, BW190MT-06 CNSL CVR W/COOLER BLUE	1816400
28	-	-	-	EA.	CANVAS, BW190MT-06 REV/BL SEAT CVR BLK	1838240
29	-	-	-	EA.	CANVAS, BW190MT-06 REV/BL SEAT CVR BLUE	1838242
30	1	-	-	EA.	CONSOLE SUB-ASSY	09-201
31	1	-	-	PR.	CLIP, POLE STRG BLK - MAST LIGHT	0590646
32	1	-	-	EA.	LIGHT, NAV A/R STERN 52" N/BEND	0574400
33	-	-	-	EA.	CUSH, BW190MT-06 BOW PRT	1833208
34	-	-	-	EA.	CUSH, BW190MT-06 BOW STB	1833209
35	2	-	-	EA.	EYE, BOW 1/2" X 3 3/4" SS	1835882
36	4	-	-	EA.	WASHER, LOCK/SPLIT 1/2" SC	1326214
37	4	-	-	EA.	NUT, ACONR #1/2-13 SC	1662402
38	4	-	-	EA.	SCREW, TAPPING #10A X 1.5" PTH SC	1010248
39	2	-	-	EA.	SCREW, TAPPING #8 X 1/2" PTH	1008812
40	2	-	-	EA.	THRU-HULL, MARELON BW-06 LONG MALE	1806030
41	2	-	-	EA.	THRU-HULL, MARELON BW-06 SHORT FEMALE	1806032
42	-	-	-	EA.	ACC PART, MERC SPEEDOMETER/TEMP DIG	1477942

BOSTON WHALER
 PRODUCT DEV. & MFG. ENGINEERING GROUP

INTERPRET DIMENSIONS AND TOLERANCES PER ANSI Y 14.5 UNLESS OTHERWISE SPECIFIED DIMENSIONS ARE IN INCHES. TOLERANCES:
 ANGLES = ± .5°
 .XX = ± .03
 .XXX = ± .010
 X = ± .1
 XX = ± .03
 X = ± 1/16

DO NOT SCALE DRAWING

DRAWN: S HESTER DATE: 01/06/06 SCALE: BOAT MODEL: 190MT MOLD NO.:

DWG. TITLE: FINAL ASSY INT. REL. EGN NO: 051039 DWG. NO: 11201 SH. NO. 4 OF 4