

THIS DOCUMENT IS THE PROPERTY OF BOSTON WHALER, INC. MFG. DEPT., EDGEWATER, FLORIDA. ALL RIGHTS ARE RESERVED. THIS DOCUMENT AND INFORMATION CONTAINED MUST NOT BE COPIED OR DISCLOSED TO OTHERS WITHOUT WRITTEN PERMISSION OF BOSTON WHALER, INC.

DWG. NO:
11201

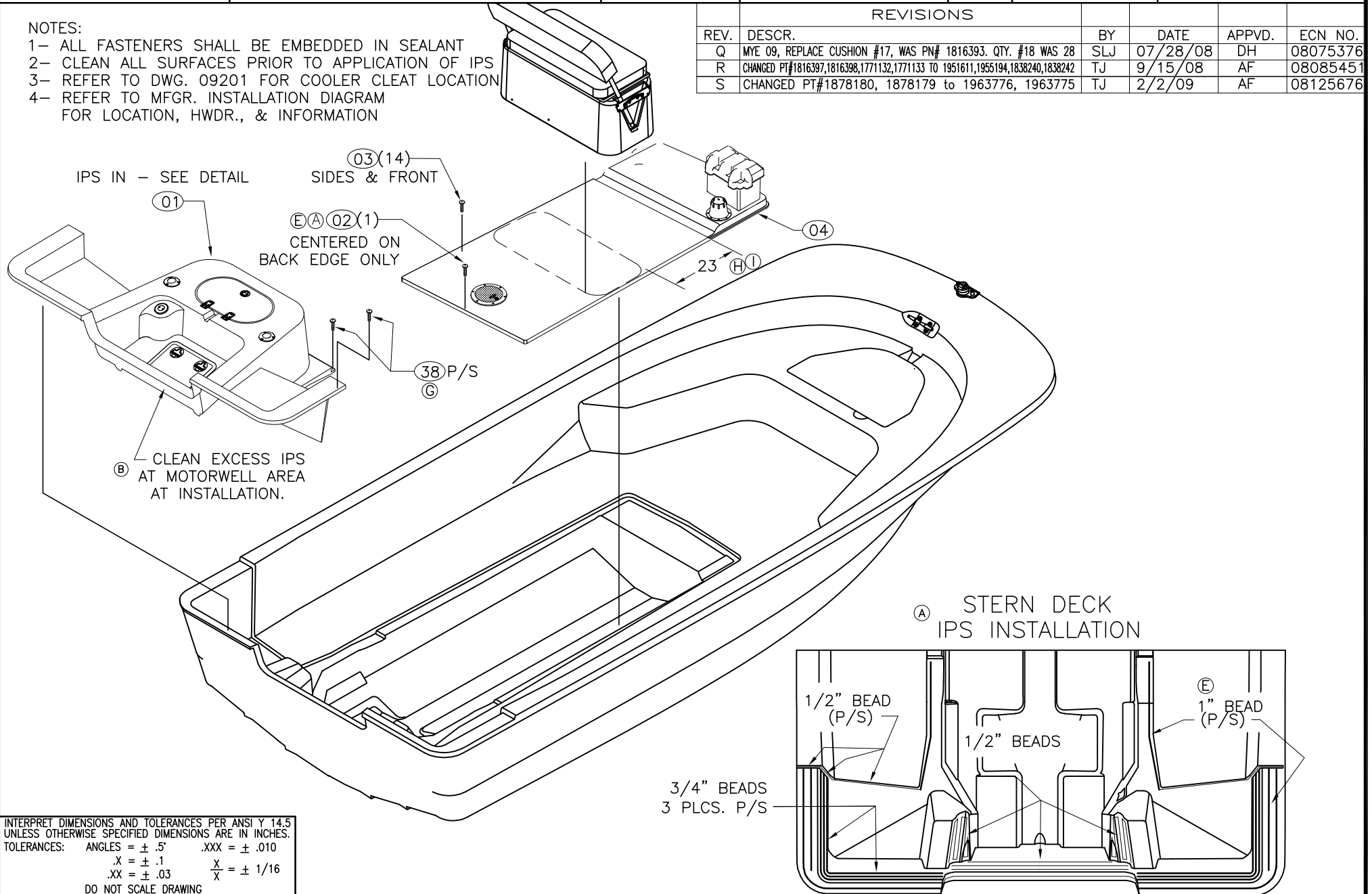
REV.
S

CURRENT ECD
08125676

NOTES:

- 1- ALL FASTENERS SHALL BE EMBEDDED IN SEALANT
- 2- CLEAN ALL SURFACES PRIOR TO APPLICATION OF IPS
- 3- REFER TO DWG. 09201 FOR COOLER CLEAR LOCATION
- 4- REFER TO MFGR. INSTALLATION DIAGRAM FOR LOCATION, HWDR., & INFORMATION

REVISIONS					
REV.	DESCR.	BY	DATE	APPVD.	ECN NO.
Q	MYE 09, REPLACE CUSHION #17, WAS PN# 1816393. QTY. #18 WAS 28	SLJ	07/28/08	DH	08075376
R	CHANGED PT#1816397,1816398,1771132,1771133 TO 1951611,1955194,1838240,1838242	TJ	9/15/08	AF	08085451
S	CHANGED PT#1878180, 1878179 TO 1963776, 1963775	TJ	2/2/09	AF	08125676



INTERPRET DIMENSIONS AND TOLERANCES PER ANSI Y 14.5 UNLESS OTHERWISE SPECIFIED DIMENSIONS ARE IN INCHES.
TOLERANCES: ANGLES = ± .5° .XXX = ± .010
.X = ± .1
.XX = ± .03
X = ± 1/16
DO NOT SCALE DRAWING



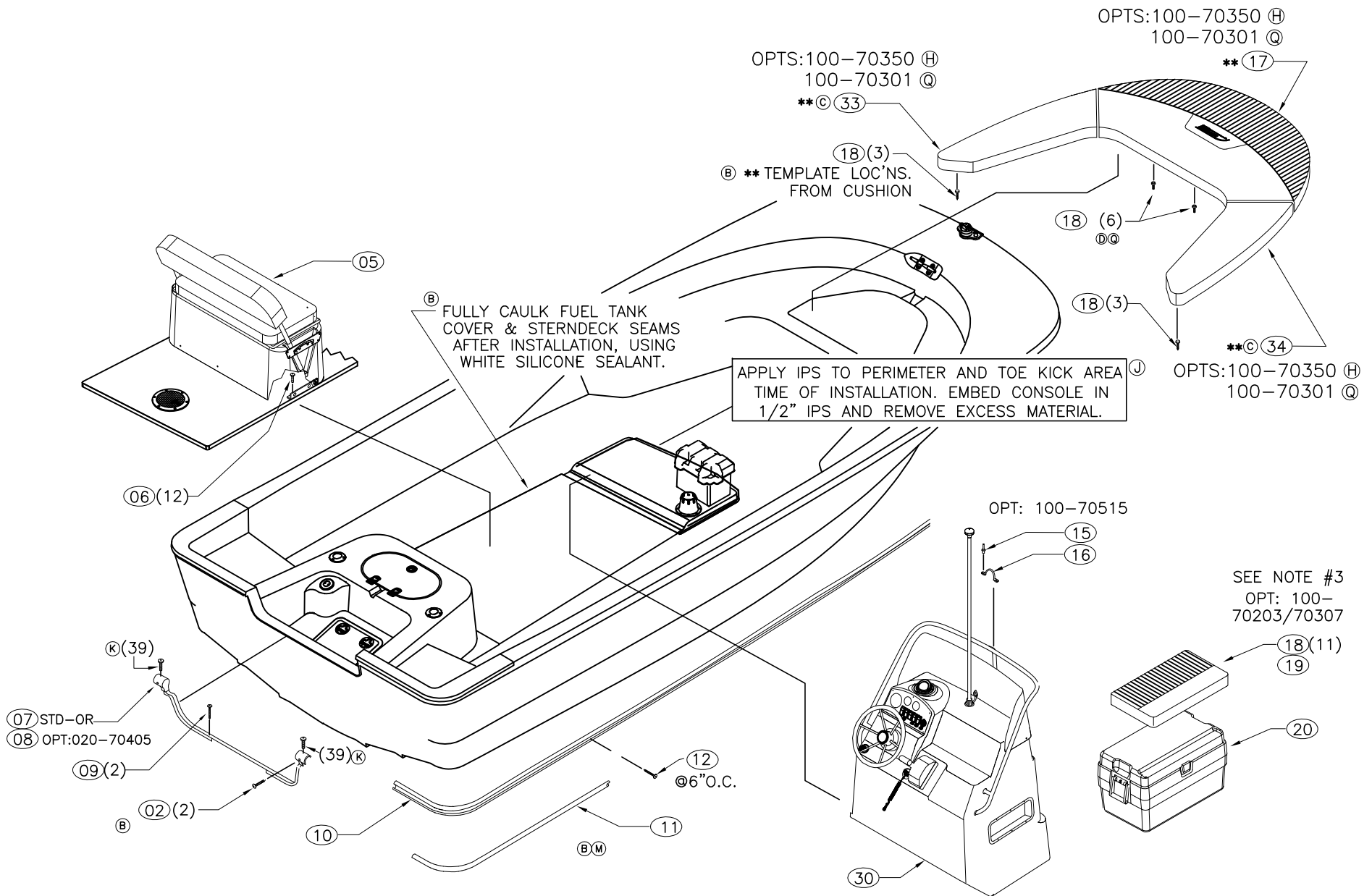
CHECKED: RA	DATE: 1-13-06	DRAWN: S HIESTER	DATE: 01/06/06	SCALE:	BOAT MODEL	MOLD NO.
APPD: K. R.	DATE: 1-13-06	DWG. TITLE:	FINAL ASSY		190MT	
DESIGN: V.P.K.	DATE: 1-13-06			INIT. REL. ECN NO:	DWG. NO:	SHT. NO.
INT. ENG: M.G.	DATE: 1-13-06			051039	11201	1 OF 4

THIS DOCUMENT IS THE PROPERTY OF BOSTON WHALER, INC. MFG. DEPT., EDGEWATER, FLORIDA. ALL RIGHTS ARE RESERVED. THIS DOCUMENT AND INFORMATION CONTAINED MUST NOT BE COPIED OR DISCLOSED TO OTHERS WITHOUT WRITTEN PERMISSION OF BOSTON WHALER, INC.

DWG. NO:
11201

REV.
S

CURRENT ECD
08125676



INTERPRET DIMENSIONS AND TOLERANCES PER ANSI Y 14.5 UNLESS OTHERWISE SPECIFIED DIMENSIONS ARE IN INCHES.
TOLERANCES: ANGLES = ± .5° .XXX = ± .010
.X = ± .1
.XX = ± .03 X = ± 1/16
DO NOT SCALE DRAWING

DRAWN: S HIESTER

DATE: 01/06/06

SCALE:

DWG. TITLE:

FINAL ASSY

BOAT MODEL

190MT

MOLD NO.

INIT. REL. ECN NO:

051039

DWG. NO:

11201

SHT. NO.

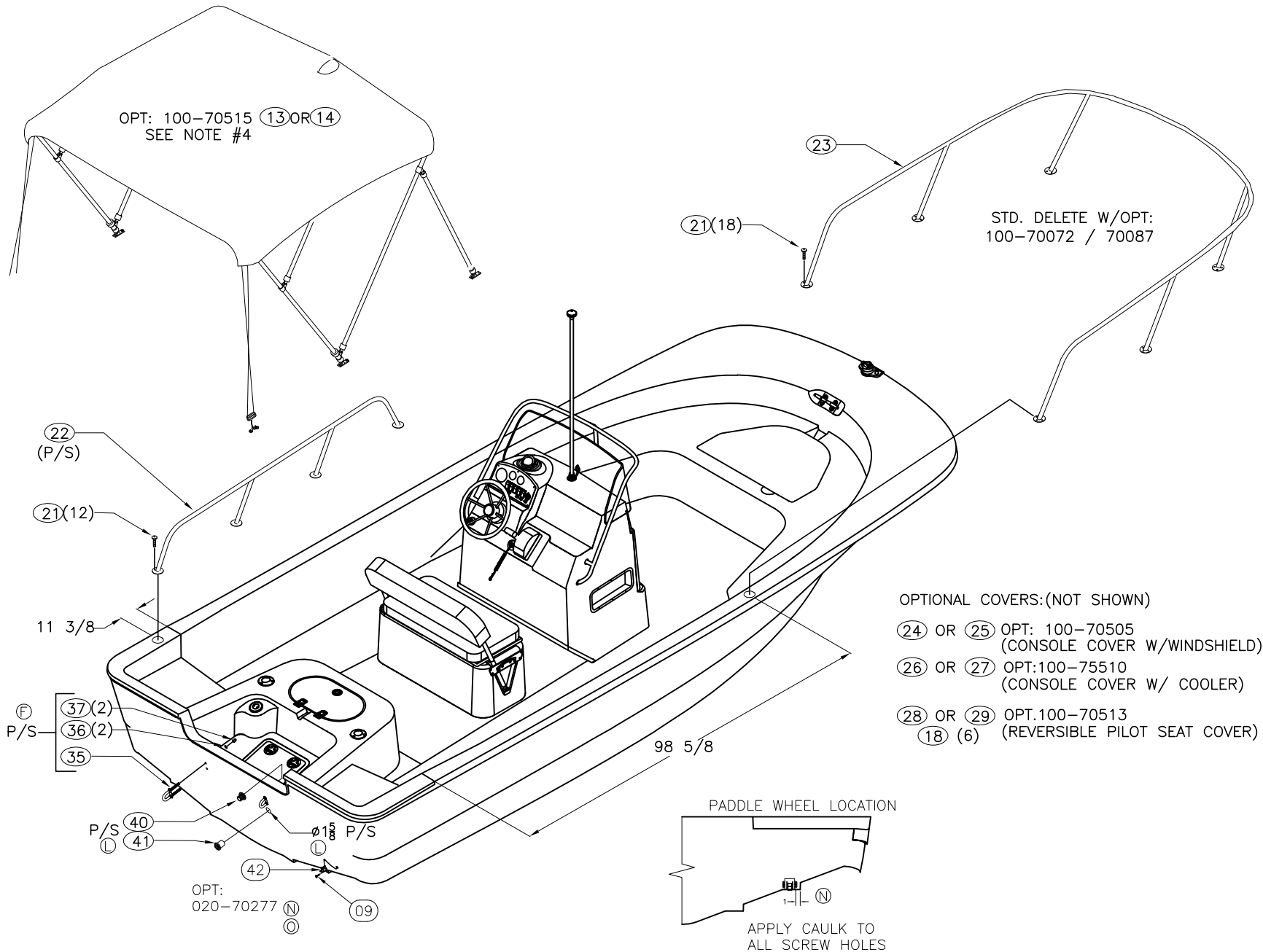
2 OF 4

THIS DOCUMENT IS THE PROPERTY OF BOSTON WHALER, INC. MFG. DEPT., EDGEWATER, FLORIDA. ALL RIGHTS ARE RESERVED. THIS DOCUMENT AND INFORMATION CONTAINED MUST NOT BE COPIED OR DISCLOSED TO OTHERS WITHOUT WRITTEN PERMISSION OF BOSTON WHALER, INC.

DWG. NO:
11201

REV.
S

CURRENT ECD
08125676



OPTIONAL COVERS: (NOT SHOWN)

(24) OR (25) OPT: 100-70505
(CONSOLE COVER W/WINDSHIELD)

(26) OR (27) OPT: 100-75510
(CONSOLE COVER W/ COOLER)

(28) OR (29) OPT: 100-70513
(18) (6) (REVERSIBLE PILOT SEAT COVER)

PADDLE WHEEL LOCATION

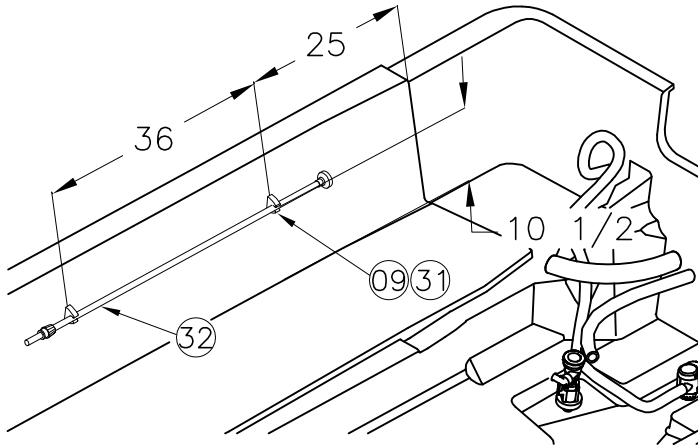
APPLY CAULK TO ALL SCREW HOLES

THIS DOCUMENT IS THE PROPERTY OF BOSTON WHALER, INC. MFG. DEPT., EDGEWATER, FLORIDA. ALL RIGHTS ARE RESERVED. THIS DOCUMENT AND INFORMATION CONTAINED MUST NOT BE COPIED OR DISCLOSED TO OTHERS WITHOUT WRITTEN PERMISSION OF BOSTON WHALER, INC.

DWG. NO:
11201

REV.
S

CURRENT ECD
08125676



ITEM	QNT			U/M	PARTS LIST		B.W.I. NO
	STD	OPT			DESCRIPTION		
1	1	-		EA.		STERN DECK SUB-ASSY	09-101
(A) 2	3	-		EA.		SCREW, TAPPING #10A X 1.5" PTH SC	1008747
3	14	-		EA.		SCREW, TAPPING #10A X 2" PTH SC	1008754
4	1	-		EA.		FUEL TANK COVER SUB-ASSY	09-301
5	1	-		EA.		REVERSIBLE PILOT SEAT SUB-ASSY	09-251
6	12	-		EA.		SCREW, MACHINE #1/4-20 X 1.5" PPH SC	1008598
7	1	-		EA.		CAP, RUBRAIL BW190MT-06 TRNSM TRIM W/NOTCH	1816448
8	-	1		EA.		CAP, RUBRAIL BW190MT-06 TRNSM TRIM	1816449
9	4	-		EA.		SCREW, TAPPING #10A X 1" PTH SC	1008739
10	1	-		EA.		INSERT, RUB RAIL CHAR FLEX 54'	1020841
11	1	-		EA.		RUBRAIL, PLASTIC CHAR 54'	1312487
12	60	-		EA.		SCREW, TAP #10A X 1.5" W/STP EPXY ORNG PFH SC	1814515
(S/P) 13	-	1		EA.		CANVAS, BW18DNT/190MT-09 BIM TOP W/MNT BLK	1963776
(S/P) 14	-	1		EA.		CANVAS, BW18DNT/190MT-09 BIM TOP W/MNT BLUE	1963775
15	-	2		EA.		RIVET, POP/BLIND #3/16 X 3/8" SS	0192120
16	-	1		EA.		EYE, STRAP EYE TIE-DOWN 5/16" CHR/ZINC	0861120
(Q) 17	-	1		EA.		CUSH, BW190MT-09 BOW	1950808
(Q/D/C) 18	-	29		EA.		SNAP STUD, W/#8 X 3/8" PH BR/NI/SS	0203786
19	-	1		EA.		CUSH, BW190MT-06 COOLER SEAT 72QT	1819928
20	-	1		EA.		COOLER, 72QT WHT	1016427
21	42	-		EA.		SCREW, MACHINE #1/4-20 X 1" PPH SC	1008580
22	2	-		EA.		RAIL, SIDE BW170MT-02 AFT	1689429
23	1	-		EA.		RAIL, BOW BW190MT-06 SS	1816363
(R) 24	-	1		EA.		CANVAS, 190MT-09 CNSL CVR BLK	1951611
(R) 25	-	1		EA.		CANVAS, 190MT CNSL CVR BLUE	1951794
26	-	1		EA.		CANVAS, BW190MT-06 CNSL CVR W/COOLER BLK	1816399
27	-	1		EA.		CANVAS, BW190MT-06 CNSL CVR W/COOLER BLUE	1816400
(R) 28	-	1		EA.		CANVAS, BW190MT-06 REV'BL SEAT CVR BLK	1838240
(R) 29	-	1		EA.		CANVAS, BW190MT-06 REV'BL SEAT CVR BLUE	1838242
30	1	-		EA.		CONSOLE SUB-ASSY	09-201
31	1	-		PR.		CLIP, POLE STRG BLK - MAST LIGHT	0590646
32	1	-		EA.		LIGHT, NAV A/R STERN 52" N/BEND	0574400
(C) 33	-	1		EA.		CUSH, BW190MT-06 BOW PRT	1833208
(C) 34	-	1		EA.		CUSH, BW190MT-06 BOW STB	1833209
(F) 35	2	-		EA.		EYE, BOW 1/2" X 3 3/4" SS	1835882
(F) 36	4	-		EA.		WASHER, LOCK/SPLIT 1/2" SC	1326214
(F) 37	4	-		EA.		NUT, ACORN #1/2-13 SC	1662402
(G) 38	4	-		EA.		SCREW, TAPPING #10A X 1.5" PFH SC	1010248
(K) 39	2	-		EA.		SCREW, TAPPING #8 X 1/2" PTH	1008812
(L) 40	2	-		EA.		THRU-HULL, MARELON BW-06 LONG MALE	1806030
(L) 41	2	-		EA.		THRU-HULL, MARELON BW-06 SHORT FEMALE	1806032
(N) 42	-	1		EA.		ACC PART, MERC SPEEDOMETER/TEMP DIG	1477942



INTERPRET DIMENSIONS AND TOLERANCES PER ANSI Y 14.5 UNLESS OTHERWISE SPECIFIED DIMENSIONS ARE IN INCHES.
TOLERANCES: ANGLES = ± .5° .XXX = ± .010
.X = ± .1 .X = ± 1/16
.XX = ± .03 X

DO NOT SCALE DRAWING

DRAWN: S HIESTER

DATE: 01/06/06

SCALE:

BOAT MODEL

MOLD NO.

190MT

DWG. TITLE:

FINAL ASSY

INIT. REL. ECD NO:

DWG. NO:

051039

11201

SHT. NO.

4 OF 4