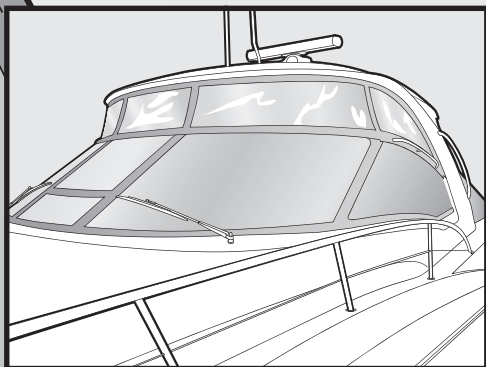


# Canvas

## Installation & Care

For Sport Yachts  
& Yachts



*Sea Ray*®

*The Standard of Excellence™*

***Thank you*** for purchasing your new Sea Ray boat. We are proud to be part of your boating experience. This guide is provided to help you with all of your canvas installation needs. Please remember to place your Canvas Handbook in a convenient place on your vessel. In addition, check [www.searay.com](http://www.searay.com) periodically for changes and updates. The following are a few reminders.

- Be sure to follow installation sequences for ease of installation and to ensure a proper fit.
- When using your Canvas Handbook please note that by each section you will find one or two figures. One figure indicates a single person installation whereas two figures indicates a two person installation.
- Do not allow a clear vinyl surface to come in contact with itself or other clear vinyl during storage. A non-vinyl protective layer is recommended to avoid discoloration or clouding.



*The Standard of Excellence™*



*The Standard of Excellence™*

Sea Ray Boats, 2600 Sea Ray Blvd., Knoxville, TN 37914.  
For information call 1-800-SRBOATS or fax 1-636-326-3282.  
Internet address: <http://www.searay.com>

# Sea Ray Canvas Care

## Care, Cleaning and General Information For Your Sea Ray Canvas

The boat top and other canvas items supplied on your Sea Ray® boat are manufactured from top quality materials to provide you with years of trouble-free service. The following information on the care, cleaning and proper storage of the fabrics and fasteners that make up your marine canvas is being provided to help you maintain appearance and ease of operation.

Installing or removing canvas is easier while the boat is docked. Not all water and weather conditions allow for stability during the process. We recommend that two or more people be available to make these tasks safer and easier.

## Characteristics

### Sunbrella®

1. Sunbrella is made from 100% acrylic fiber and is thermoplastic or heat sensitive. Do not subject to excessive heat as the fabric will shrink.
2. Sunbrella is a woven fabric. Even though it is treated with a water repellency some “misting” through the fabric is typical.
3. With new canvas, the greatest potential for leakage is through the sewn seams. Because Sunbrella and the long-term thread used are synthetic, the holes created by sewing will not swell up and seal when exposed to water as cotton does. Usually the movement of the fabric in use will move the fibers enough to seal the holes. You may apply a couple of light coats of “303 High Tech Fabric Guard” to the seams to speed up this process.
4. When the canvas is new, the fit will normally be tight. It is designed this way because Sunbrella stretches as it ages. The initial tight fit allows for a suitable fit for the life of the canvas.
5. The fit with Sunbrella will vary in the heat, cold and rain.

### Sea Mark™

Sea Mark is a very water-resistant fabric that eliminates the “misting” that is common with Sunbrella. Other characteristics are similar to that of Sunbrella.

## Cleaning Instructions

**General cleaning of fabric and clear vinyl components.**

1. Clean regularly. Fabric may be cleaned without being removed from the framework.
2. Brush off any loose dirt. Use a soft cloth on clear vinyl parts.
3. Hose down.
4. Clean with a mild soap, such as Ivory Snow®, Dreft® or Woolite®, in lukewarm water (no more than 100° F).  
**DO NOT USE DETERGENTS! DO NOT USE CHEMICALS ON CLEAR VINYL!**
5. Allow soap to soak in then rinse thoroughly.
6. Air dry.
7. **DO NOT STEAM PRESS.**
8. **DO NOT DRY IN ELECTRIC OR GAS DRYERS.**
9. **USING HARSH CHEMICALS MAY VOID YOUR WARRANTY.**



## For Stubborn Stains (Sunbrella)

1. For stubborn stains, soak the fabric for approximately twenty minutes in a solution of no more than 1/2 cup (4 oz.) of bleach and 1/4 cup (2 oz.) of natural soap per each gallon of lukewarm water (no more than 100° F).
2. Rinse the fabric thoroughly in cold water. Several rinses may be necessary. Failure to remove all soap can cause deterioration of sewing threads and prohibit the fabric from being properly retreated.
3. Allow the fabric to air dry completely.
4. Retreat the fabric. Water and stain repellency may be impaired by this method of cleaning. Apply an air curing retreatment such as “303 High Tech Fabric Guard.”
5. Sunbrella may be dry cleaned but “303 High Tech Fabric Guard” must be applied to the fabric after dry cleaning.

## Care and Storage Tips

1. After each use, especially in saltwater areas, rinse canvas completely with freshwater.
2. Rinse and wipe dry all exposed metal components to maintain appearance and working order.
3. Never store canvas wet or in an unventilated, moist area.
4. A disinfectant spray may be applied to clean, dry fabric to help with mildew problems.
5. Handle the clear vinyl carefully. It is soft and very prone to scratching. To keep the vinyl soft and flexible, regularly apply a UV screening agent such as “303 Protectant.” **Do not fold.** (See “Clear Vinyl Storage.”)
6. Your Top, Side Curtains, Aft Curtain and Camper sets are designed and intended for short-term use only. Do not use for storage.
7. Under no circumstances should the boat be towed with the boat top open in the upright position.
8. Zip carefully without forcing. When zippers are new they can be a little difficult to zip. They will loosen up with use. A zipper lubricant may be used to help new zippers as well as maintaining long trouble-free service. A zipper is most vulnerable when attaching the pulls. Use care when starting a zipper to prevent damage.
9. Never remove canvas by pulling roughly on one edge of the material. To prevent damage to the fabric, fasteners should be unsnapped as close to the button as possible. If the snaps become difficult to unsnap, the action can be lowered by using one of the lubricants made for snaps and zippers or products such as Vaseline®, Chapstick®, etc. Care must be taken that the lubricant used does not stain the canvas or other surfaces it may contact.



### **WARNING: Carbon Monoxide**

All engines produce Carbon Monoxide. Operating your vessel with the canvas package installed can increase the risk of dangerous Carbon Monoxide fumes accumulating in and around the vessel. Sea Ray advises against running the boat with the canvas up, unless proper flow-through ventilation is established. Use extreme caution and watch for anyone having symptoms of Carbon Monoxide poisoning. REFER TO YOUR OWNER’S MANUAL AND OTHER MATERIAL SUPPLIED IN YOUR OWNER’S PACKET.

For boats with Carbon Monoxide monitors installed, always ensure these are working properly.

## **Congratulations on your Sea Ray® canvas purchase.**

Sea Ray is proud to make available quality products to enhance your boating experience and provide you with years of service. Designed to fit each boat perfectly, Sunbrella® canvas covers protect your boat and you from the elements. Keep this waterproof installation guide in your boat for easy reference.

At Sea Ray, we offer service you can depend on and have earned a reputation for excellence in sales and service. Contact your local dealer with any questions concerning your canvas products.

### **Table of Contents**

#### **Forward Sunshade with Awning Track**

---

#### **Aft Sunshade**

---

#### **Three-Piece Visors (Arch)**

---

#### **Side Curtains**

---

#### **Five-Piece Visors**

---

#### **Aft Curtain (1 Piece) (No Passageway)**

---

#### **Aft Curtain (4 Piece) Passageway Arch Valance Storage**

---

#### **Motor Yacht**

---

#### **Clear Vinyl Storage**

---

***Note:** Not all accessories shown in pictures or described herein are standard equipment or even available as options. Options and features are subject to change without notice. Not all model year boats may contain all the features or meet the specifications described herein. Confirm availability of all accessories and equipment with an authorized Sea Ray dealer prior to purchase. Printed in the U.S.A. January 2005© Sea Ray Boats.*



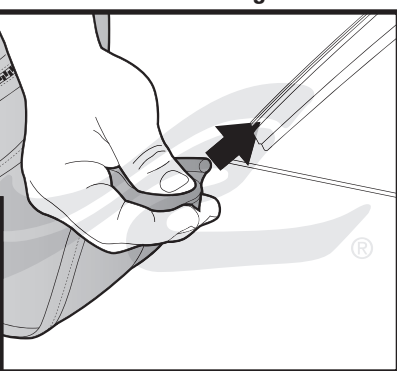
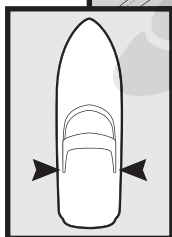
Sea Ray Boats, 2600 Sea Ray Blvd., Knoxville, TN 37914.  
For information call 1-800-SRBOATS or fax 1-636-326-3282.  
Internet address: <http://www.searay.com>

# Forward Sunshade

with Awning Track

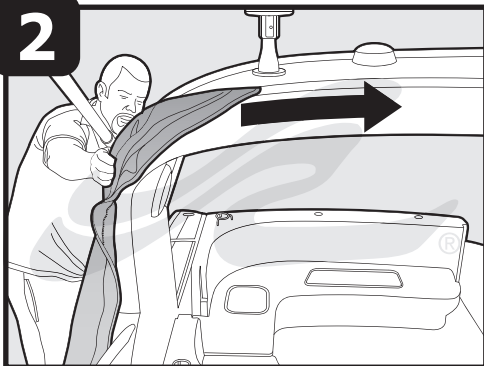


**1**



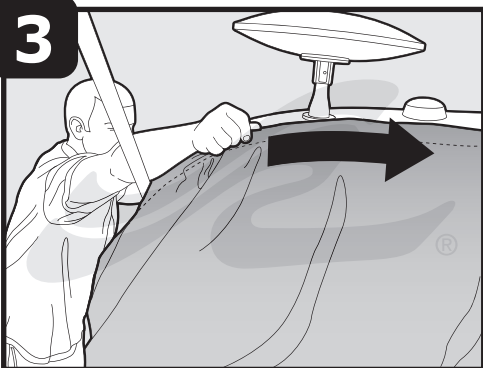
Insert canvas welt into the track on the arch.

**2**



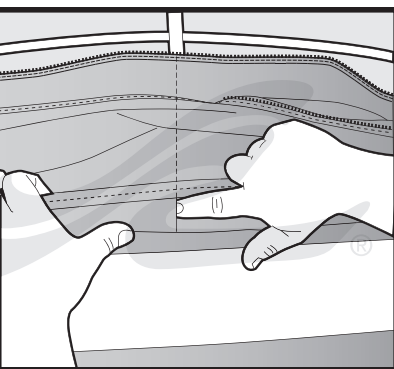
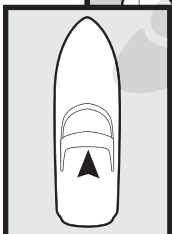
Pull canvas up and over top of arch.

**3**

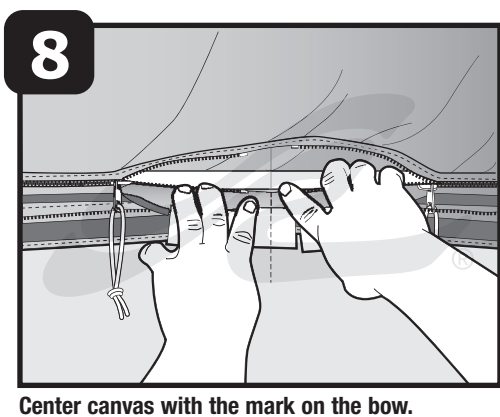
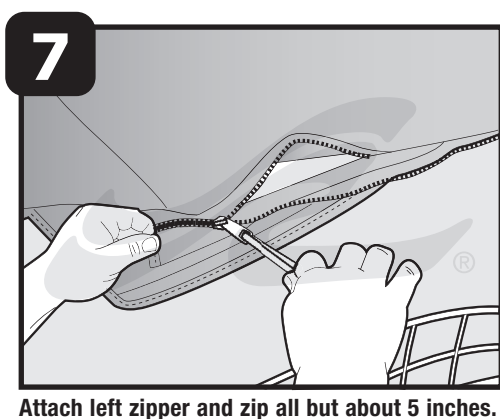
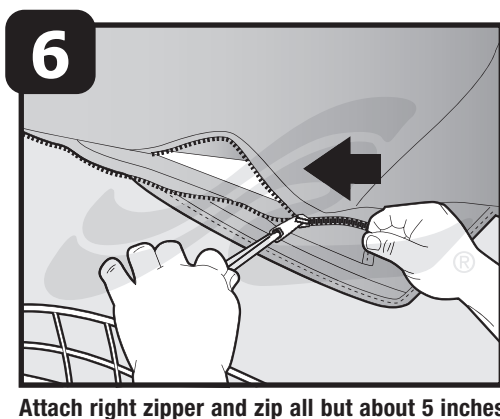
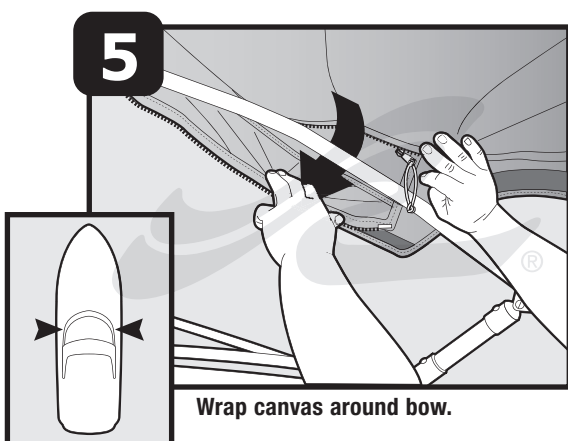


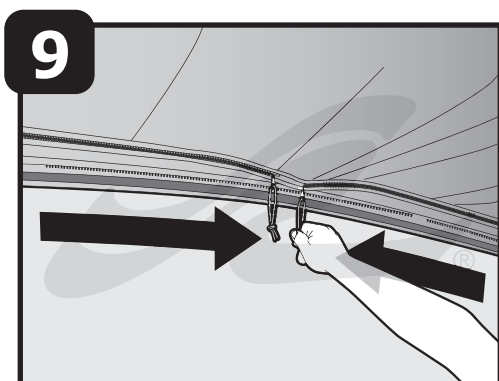
Feed canvas all the way over to the other side.

**4**

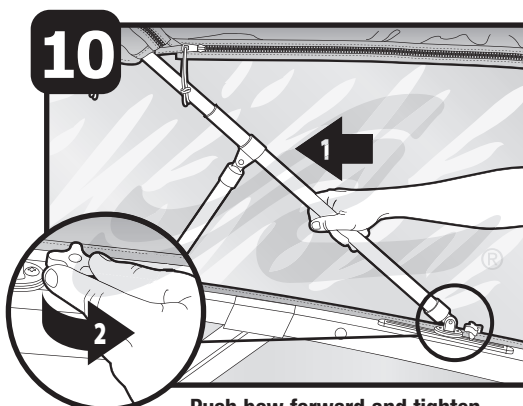


Center canvas on the arch.

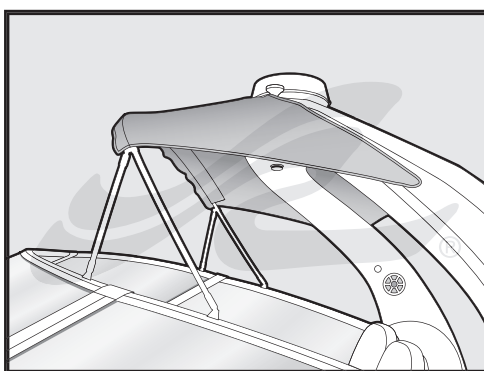




**Complete all zippers.**



**Push bow forward and tighten knob.**

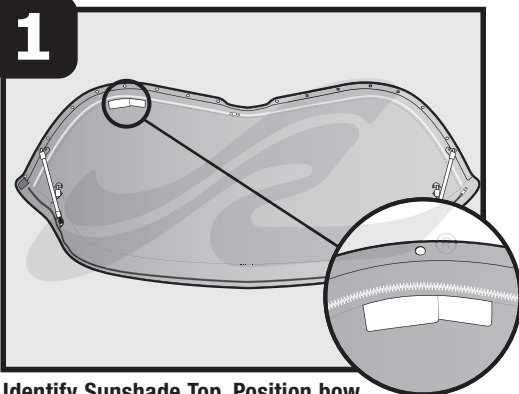


**Complete**

# Aft Sunshade

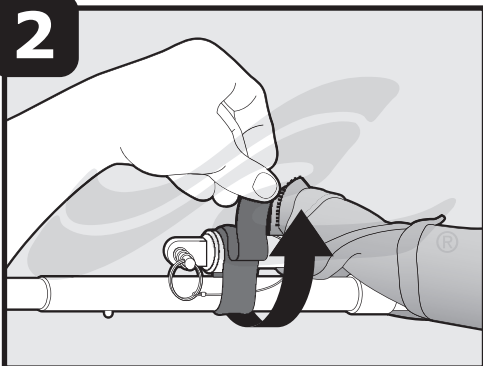


**1**



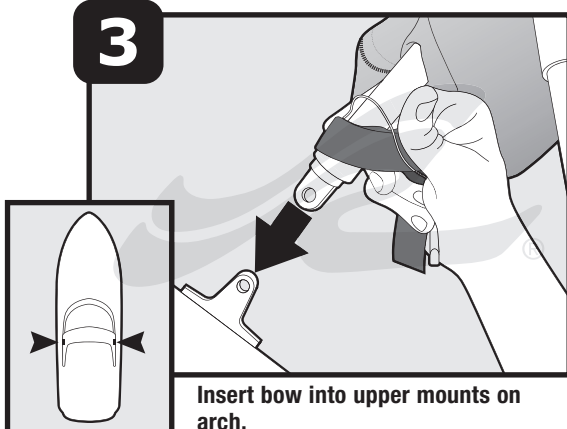
**Identify Sunshade Top. Position bow with the black zipper to the rear of the boat and the white zipper next to the arch.**

**2**



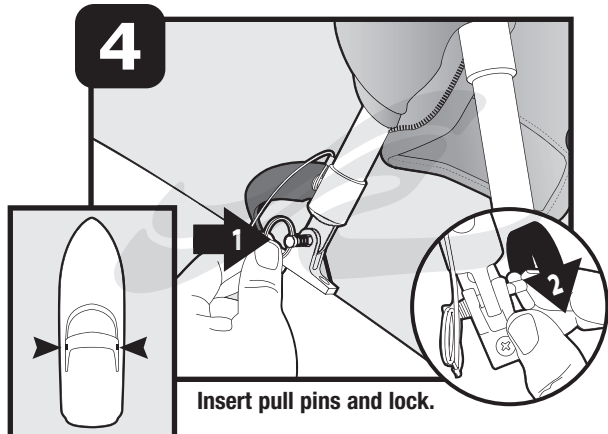
**Unwrap Velcro® straps to release adjustable support poles and remove pull pins.**

**3**

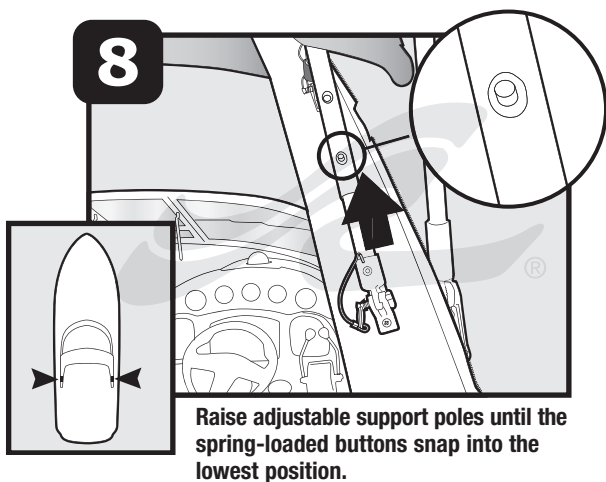
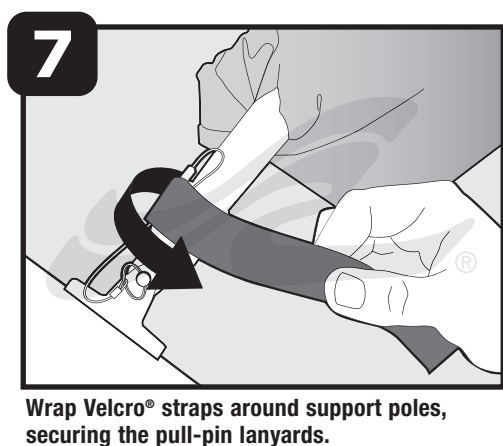
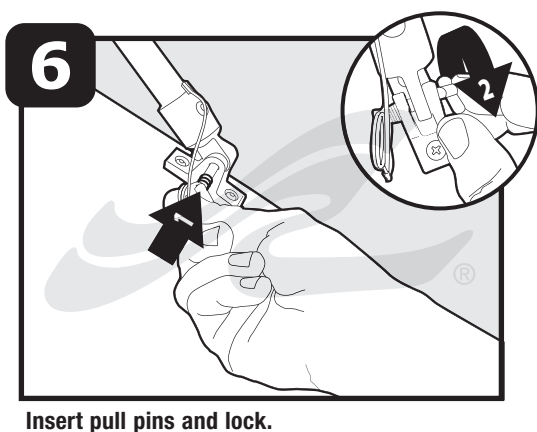
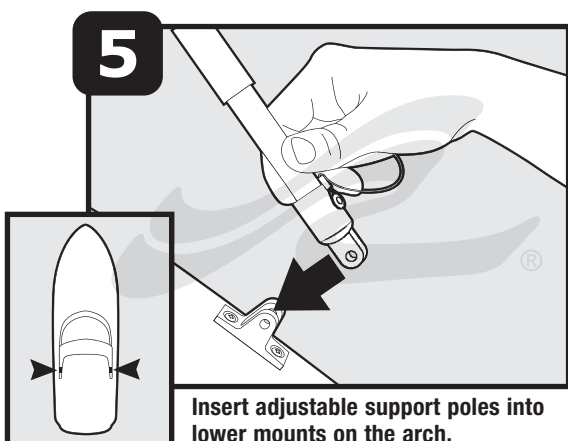


**Insert bow into upper mounts on arch.**

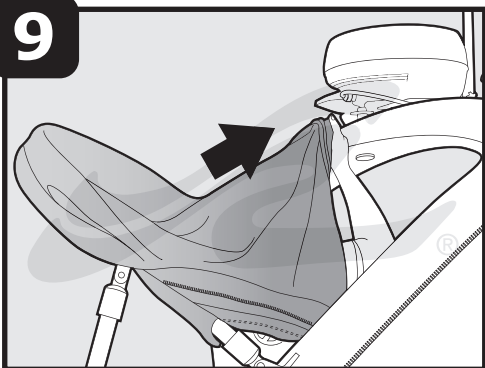
**4**



**Insert pull pins and lock.**

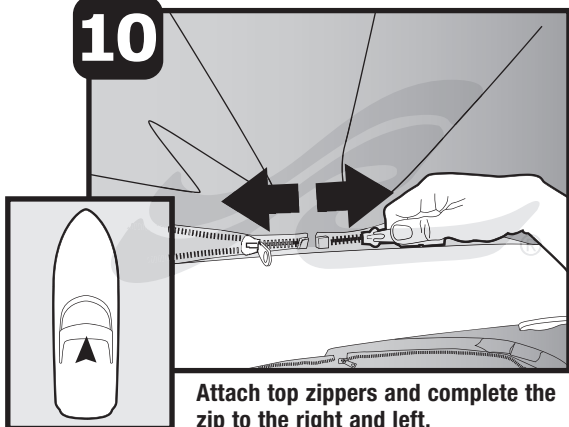


**9**



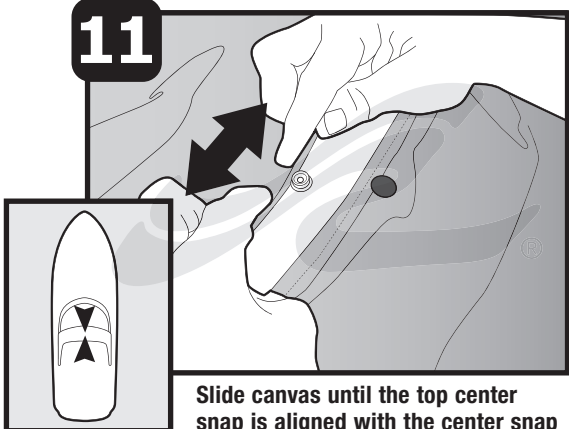
**Lift the Sunshade Top to the top of the arch.**

**10**



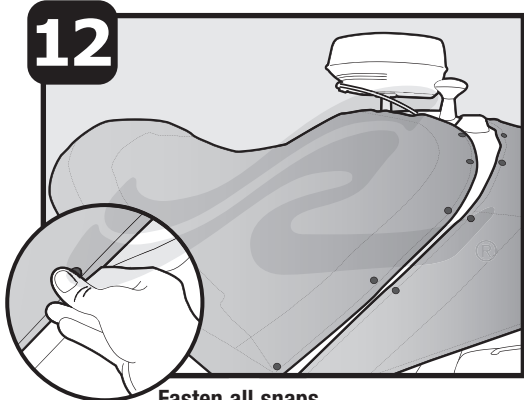
**Attach top zippers and complete the zip to the right and left.**

**11**



**Slide canvas until the top center snap is aligned with the center snap on the arch.**

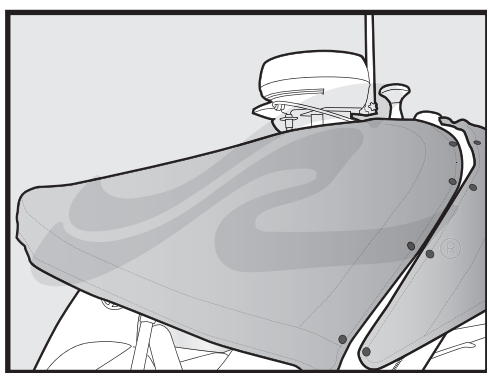
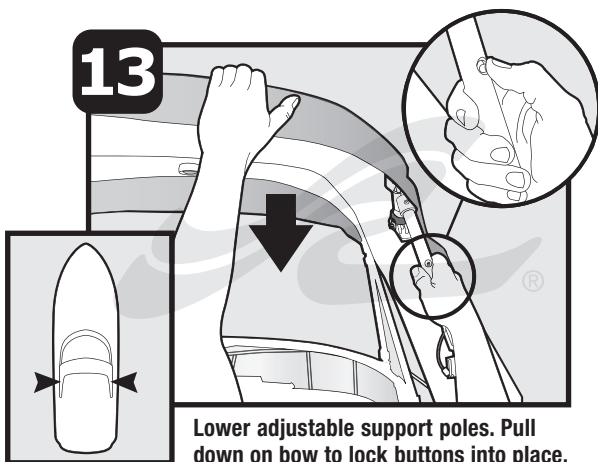
**12**



**Fasten all snaps.**



**13**

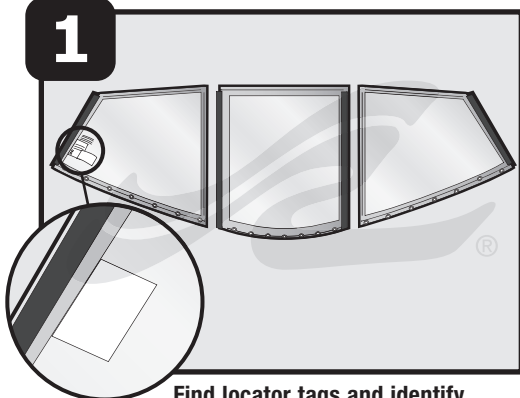


**Complete**

# Three-Piece Visors (Arch)

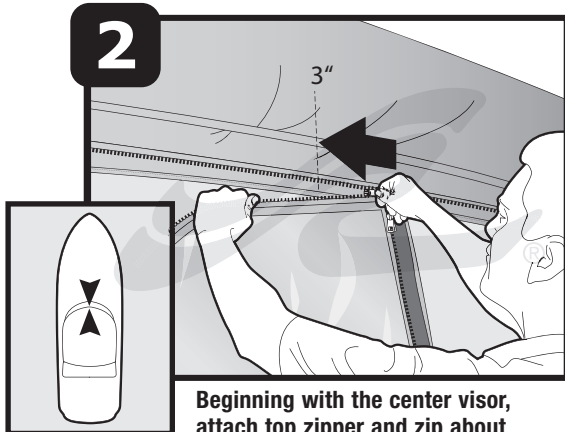


**1**



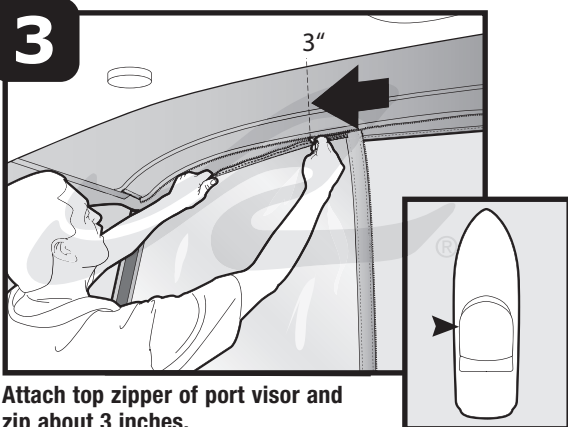
Find locator tags and identify center, port, and starboard visors.

**2**



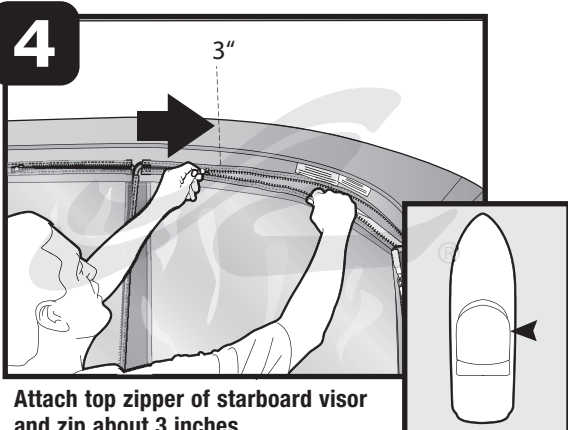
Beginning with the center visor, attach top zipper and zip about 3 inches.

**3**

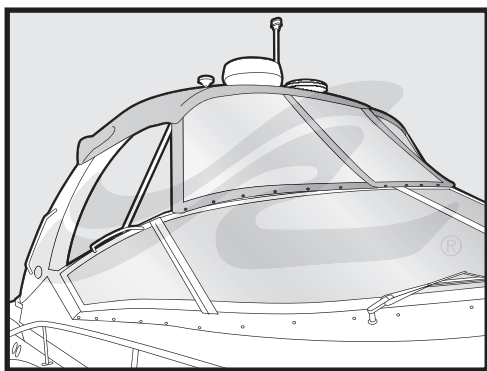
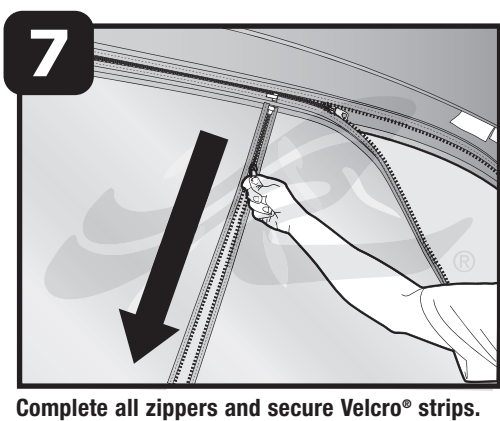
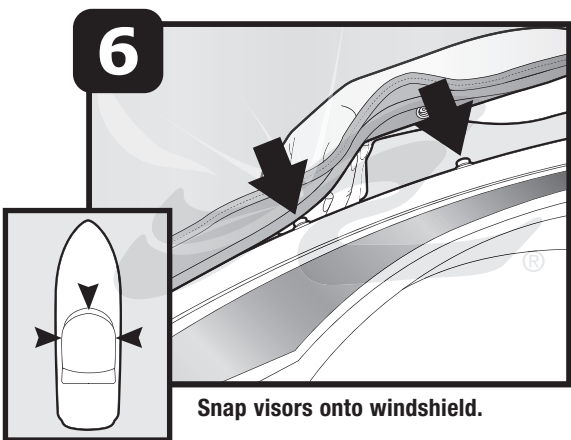
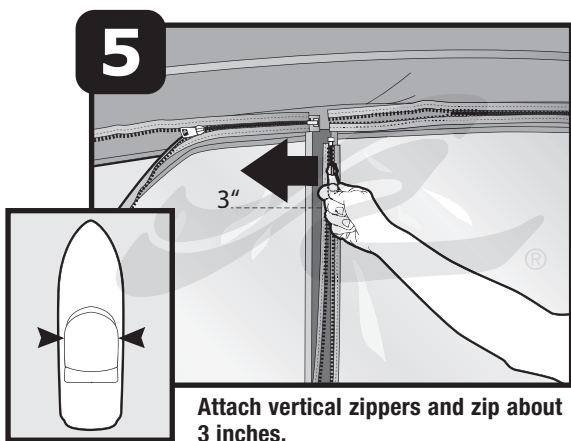


Attach top zipper of port visor and zip about 3 inches.

**4**



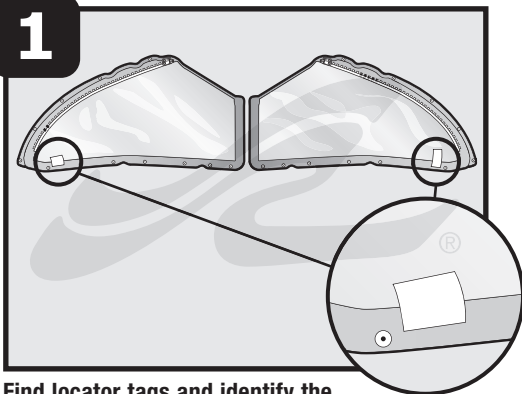
Attach top zipper of starboard visor and zip about 3 inches.



# Side Curtains

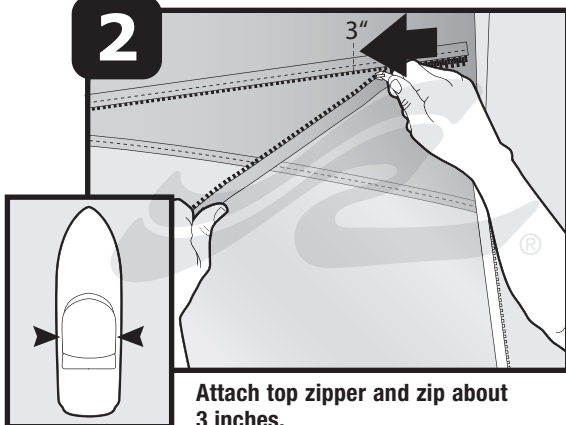


**1**



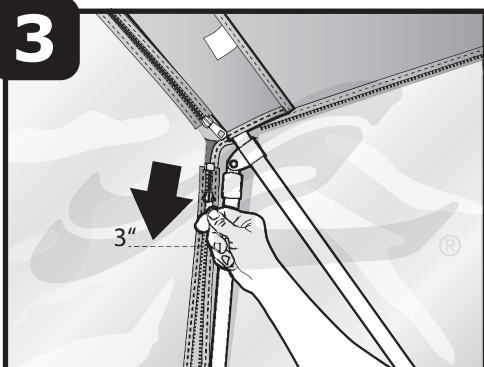
Find locator tags and identify the port and starboard curtains.

**2**



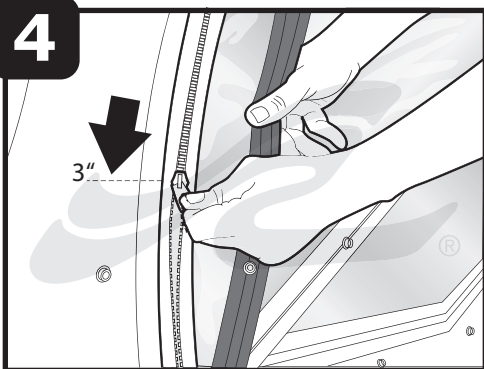
Attach top zipper and zip about 3 inches.

**3**

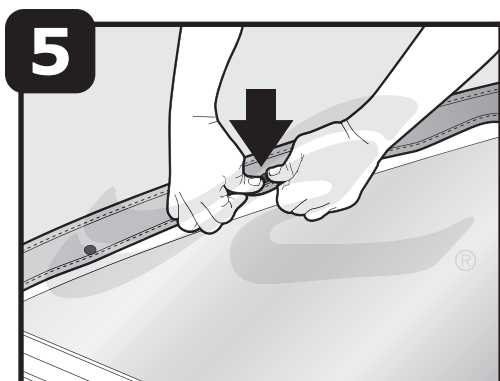


Attach vertical zipper and zip about 3 inches.

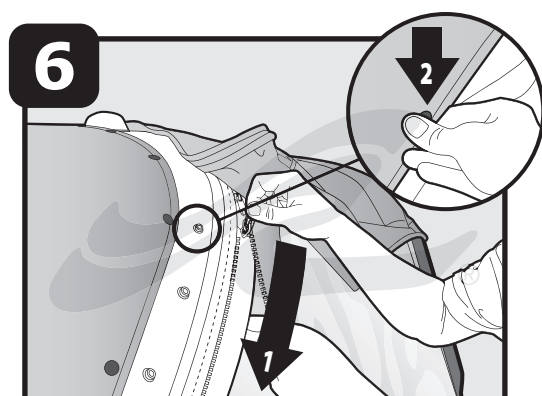
**4**



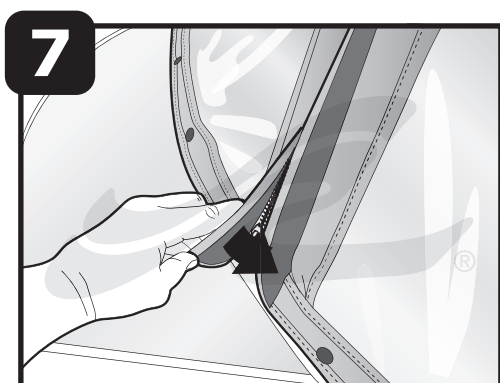
Attach white arch zipper and, from outside of the boat, zip about 3 inches.



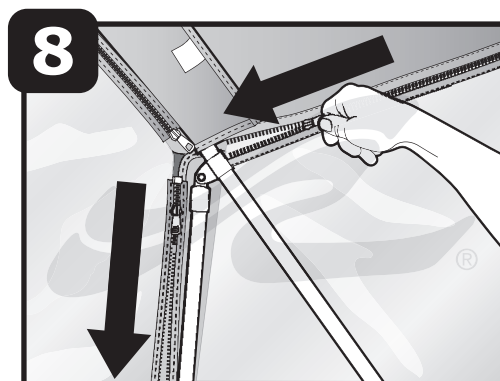
**Fasten snaps to windshield.**



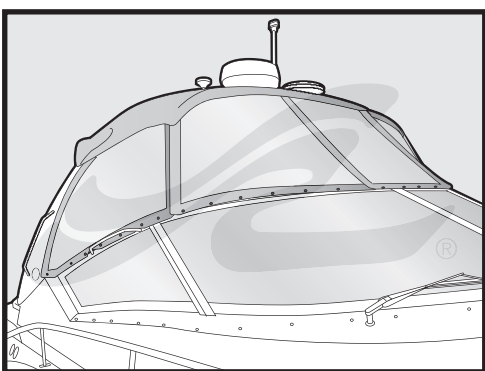
**Complete arch zipper and fasten snaps to arch.**



**Secure all Velcro® strips.**



**Complete remaining zippers.**  
**Note: Can be zipped from inside or outside.**

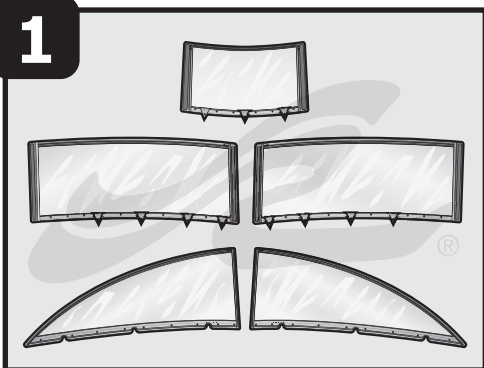


**Complete**

# Five-Piece Visors

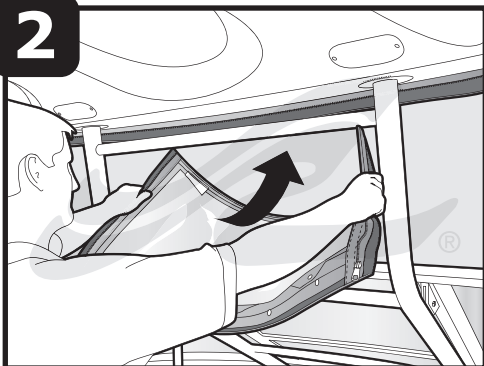


**1**



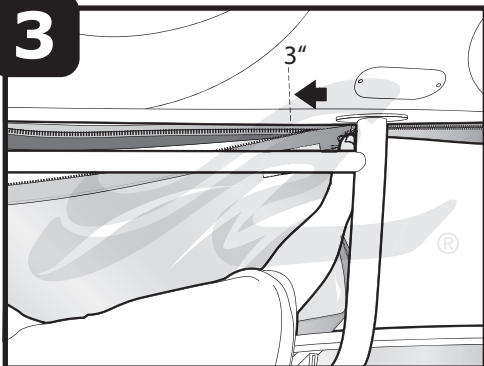
Find locator tags and identify center, port, starboard, and side visors.

**2**



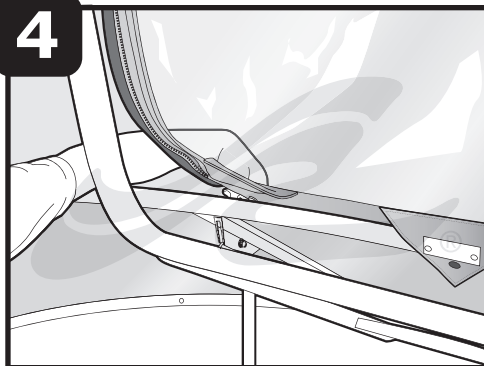
Position center visor outside opening with the zipper to the top. Note: Use Velcro® strips to hold visor in place as needed.

**3**

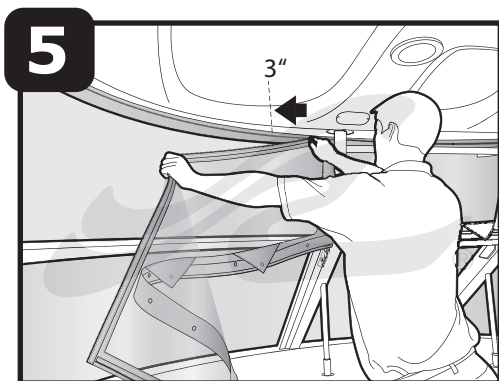


Attach top zipper and zip about 3 inches.

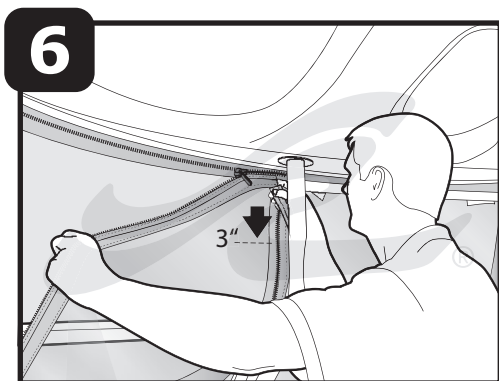
**4**



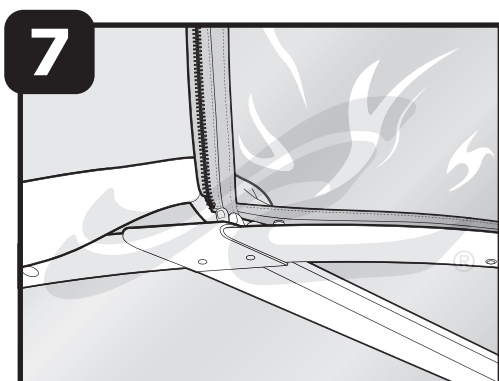
Fasten exterior snaps to the windshield. If your canvas has interior snaps, DO NOT fasten at this time.



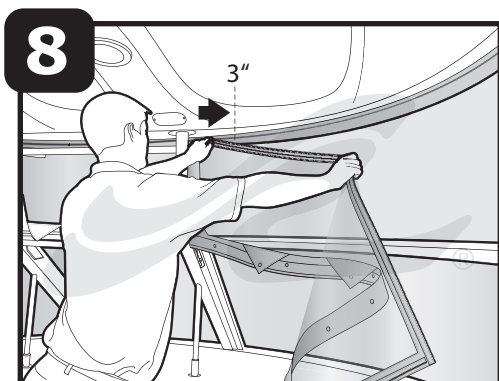
**Attach top zipper of portside visor and zip about 3 inches. Note: Use Velcro® strips to hold visor in place as needed.**



**Attach vertical zipper and zip about 3 inches.**



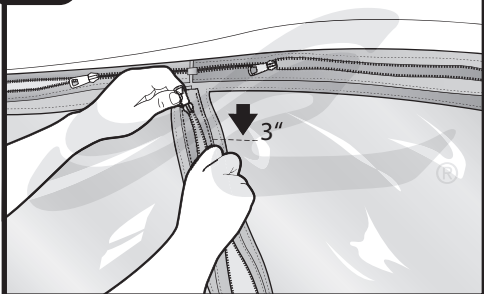
**Fasten exterior snaps to the windshield. If your canvas has interior snaps, DO NOT fasten at this time.**



**Attach top zipper of starboard visor and zip about 3 inches. Note: Use Velcro® strips to hold visor in place as needed.**

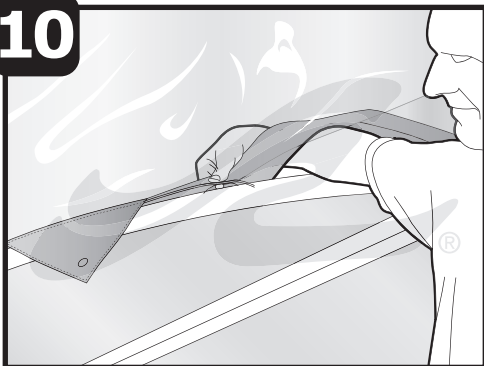


**9**



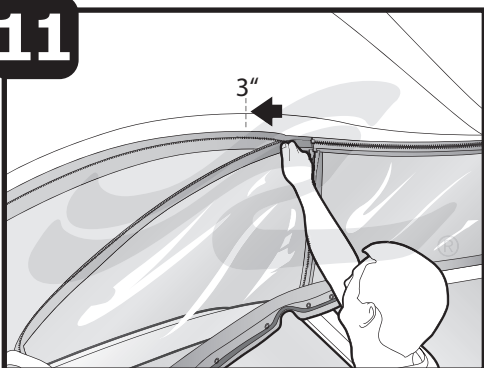
**Attach vertical zipper and zip about 3 inches.**

**10**



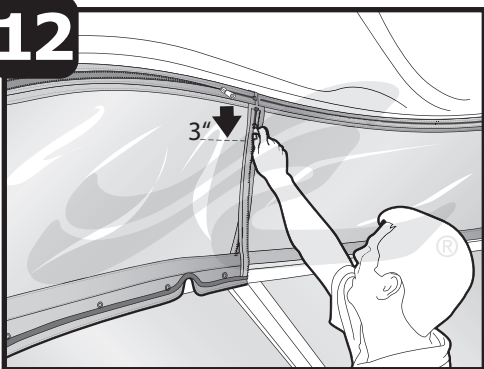
**Fasten exterior snaps to the windshield. If your canvas has interior snaps, DO NOT fasten at this time.**

**11**

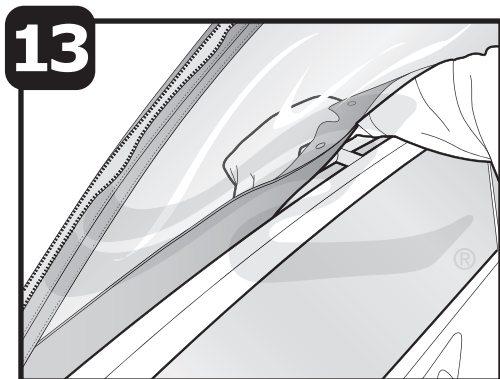


**Attach top zipper of each side visor and zip about 3 inches. Note: Use Velcro® strips to hold visor in place as needed.**

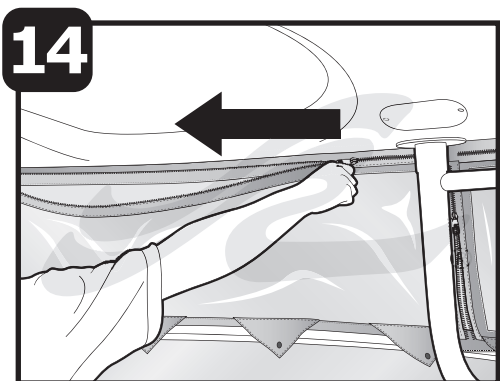
**12**



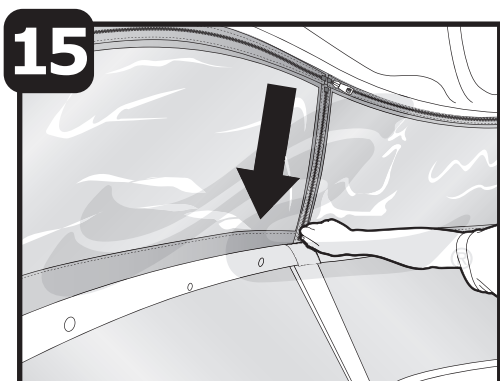
**Attach vertical zipper and zip about 3 inches.**



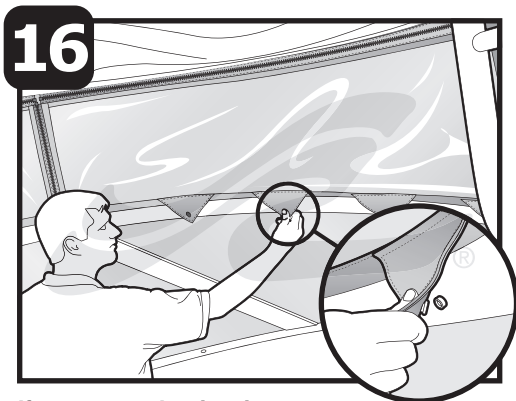
**Fasten exterior snaps to the windshield.**



**Complete all top zippers.**

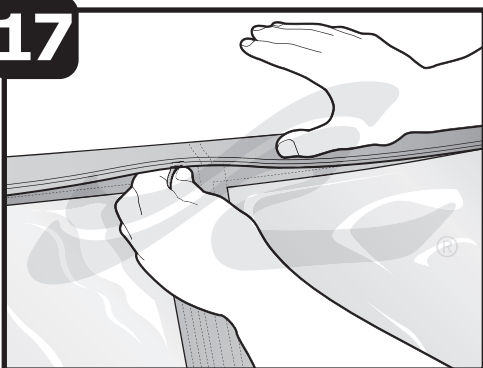


**Complete all vertical zippers.**



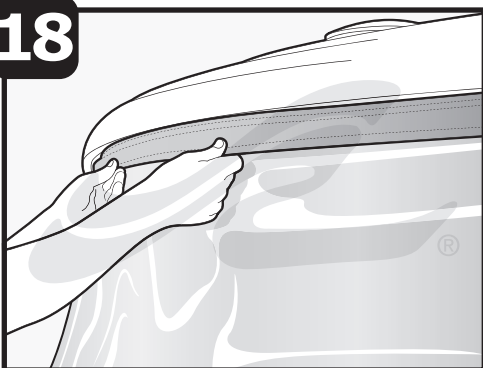
**If your canvas has interior snaps, fasten now.**

**17**



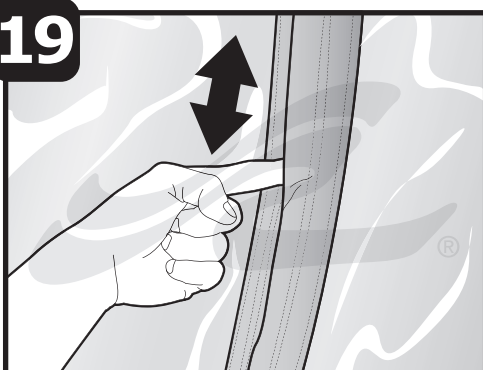
**Secure all Velcro® strips on the outside of the visors.**

**18**

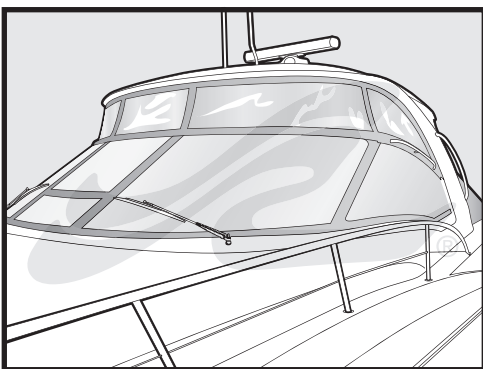


**Pull flaps securely over zippers.**

**19**



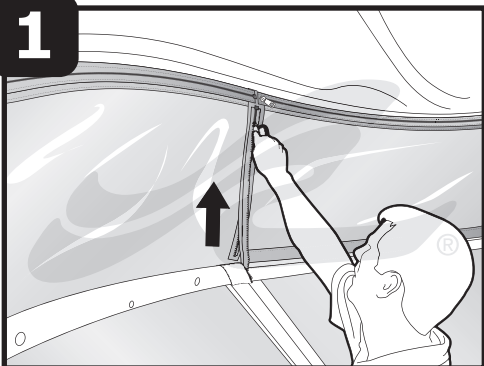
**Smooth out Velcro® closures.**



**Complete**

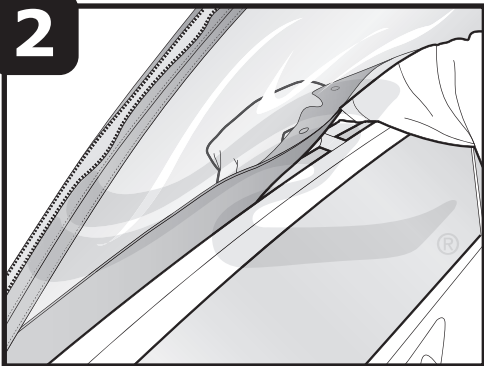
# Removal Process

**1**



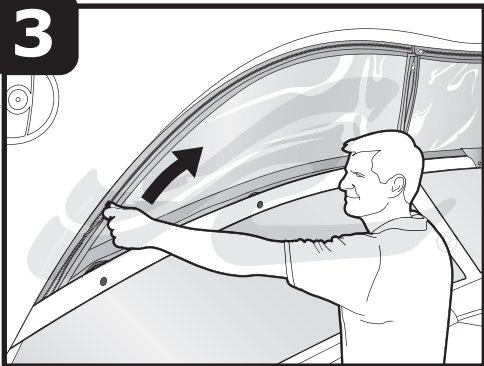
**Unzip vertical zippers.**

**2**



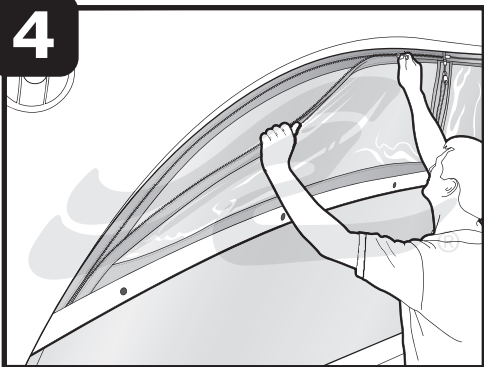
**Unfasten snaps individually.**

**3**



**Unzip top zippers.**

**4**



**Remove visors from the Velcro® strips.**

# Aft Curtain (1 Piece)



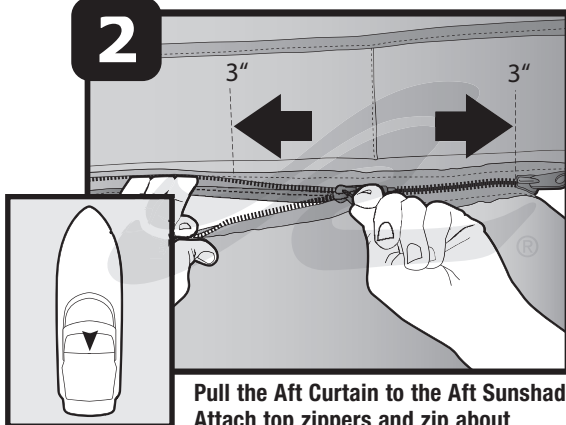
No Passageway

**1**



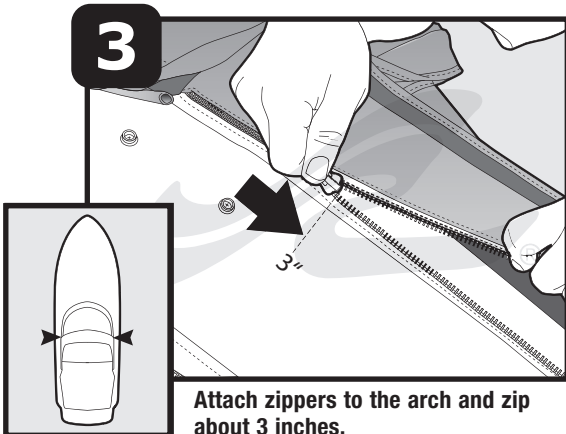
Position the Aft Curtain with bungee straps to the aft.

**2**



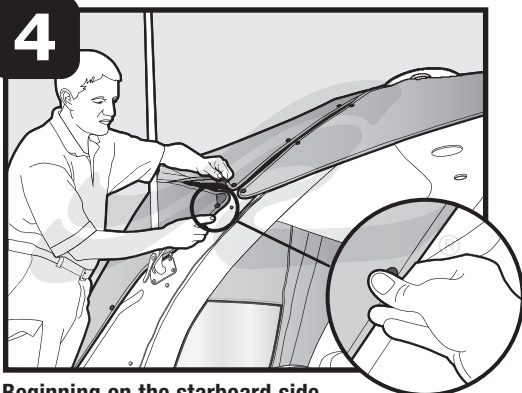
Pull the Aft Curtain to the Aft Sunshade. Attach top zippers and zip about 3 inches.

**3**

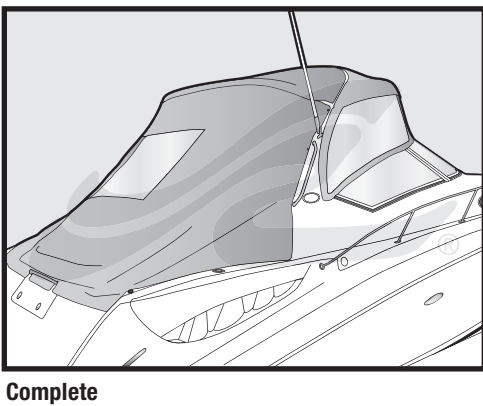
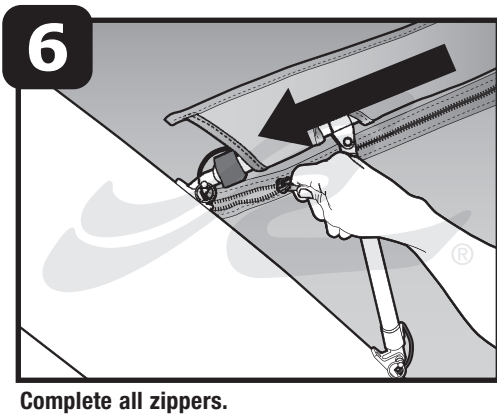
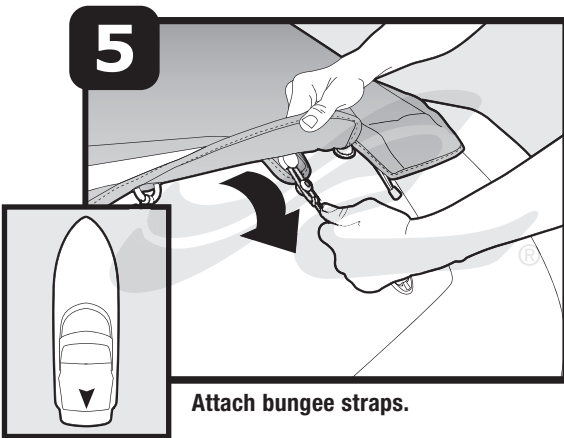


Attach zippers to the arch and zip about 3 inches.

**4**



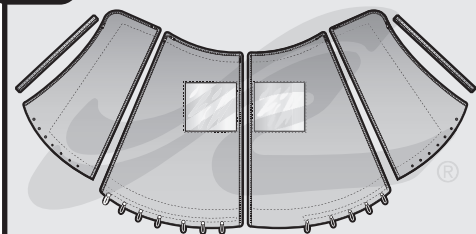
Beginning on the starboard side, fasten snaps to boat.



# Aft Curtain (4 Piece)

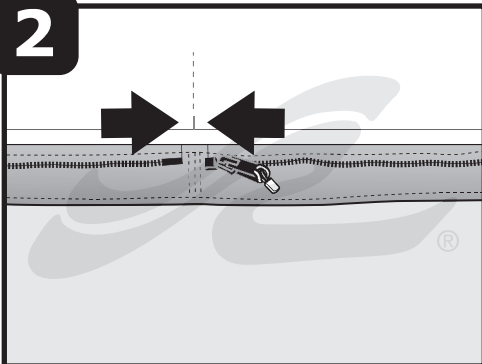


**1**



Identify the port and starboard aft curtains, and the port and starboard side panels with arch zipper valances.

**2**



Center the valance zipper with the seam in the track on top of the yacht.

**3**

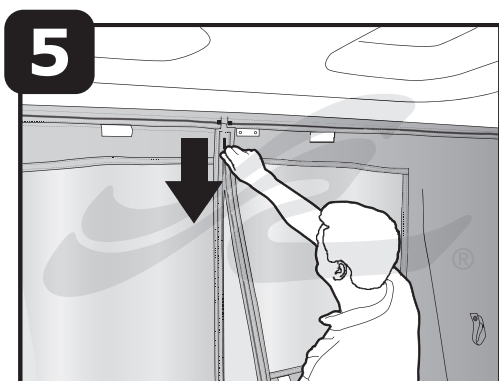


Attach top zipper of portside aft curtain and zip.

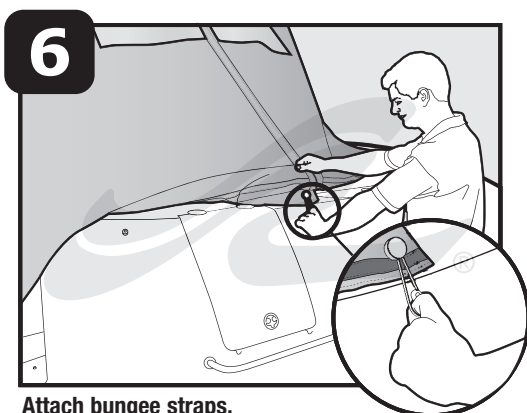
**4**



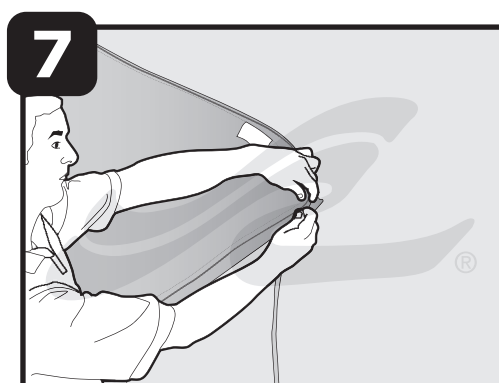
Attach top zipper of starboard aft curtain and zip.



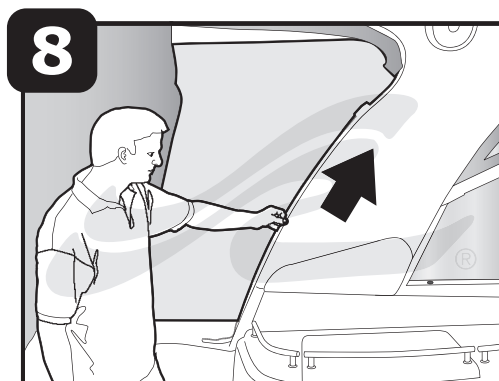
**Attach center zipper and zip to join the two curtains.**



**Attach bungee straps.**

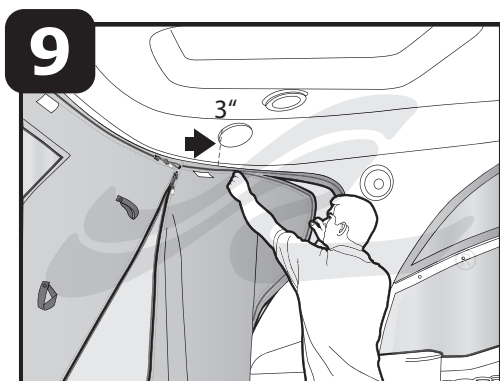


**Remove arch zipper valances from the side panels.**

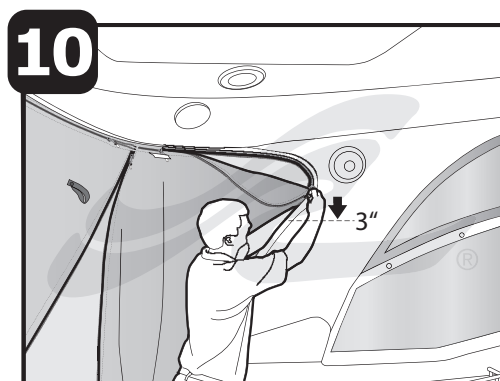


**Feed zipper valances into the tracks found on the arch.**

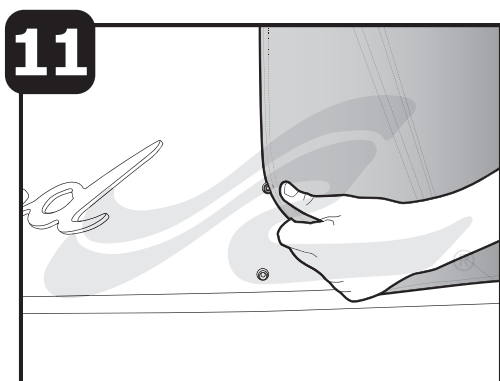




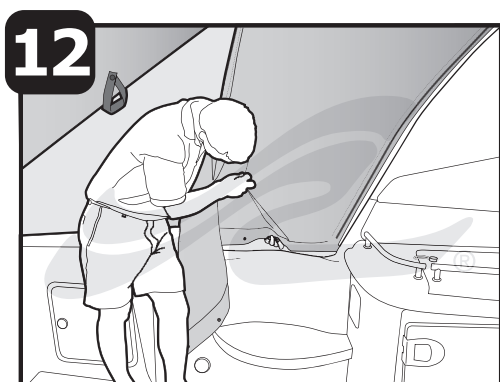
**Attach top zipper of each side panel and zip about 3 inches.**



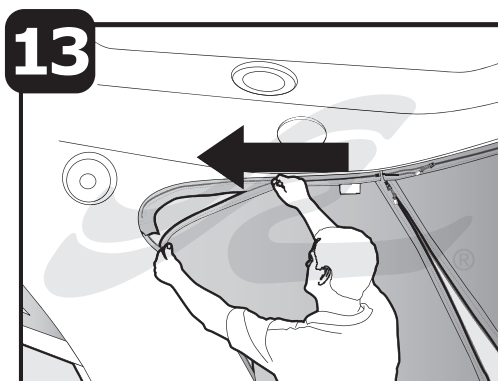
**Attach arch zipper of each side panel and zip about 3 inches.**



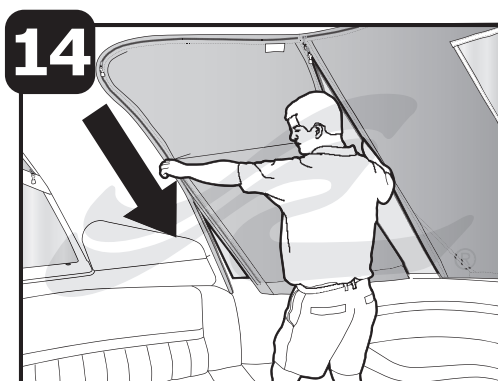
**Fasten the two exterior snaps at the base of the arch on both sides of the yacht.**



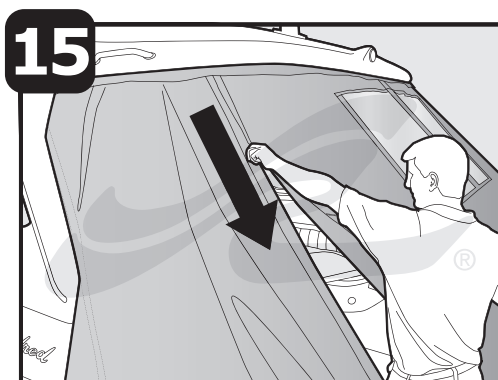
**Fasten all snaps.**



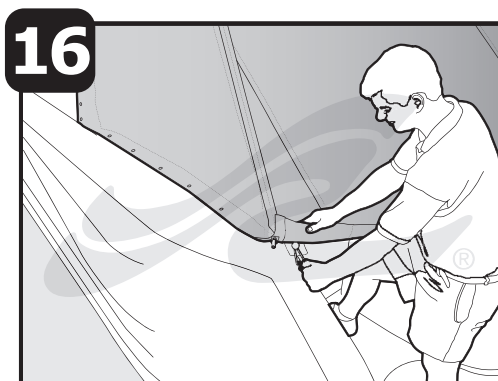
**Complete top zippers.**



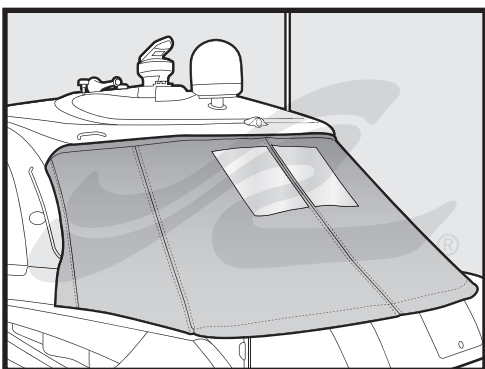
**Complete arch zippers.**



**Attach vertical zippers on both side curtains and zip.**

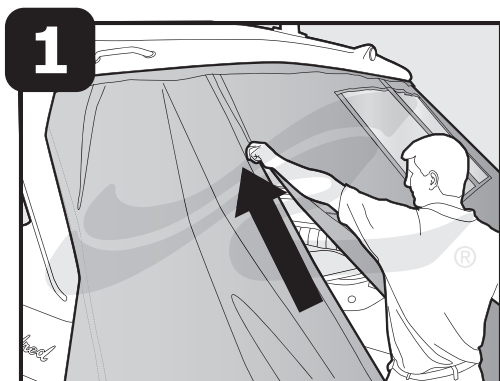


**Attach remaining bungee straps.**

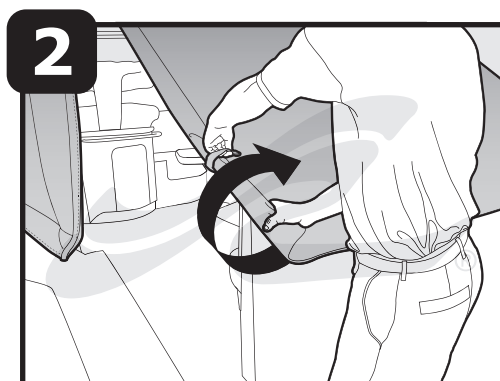


**Complete**

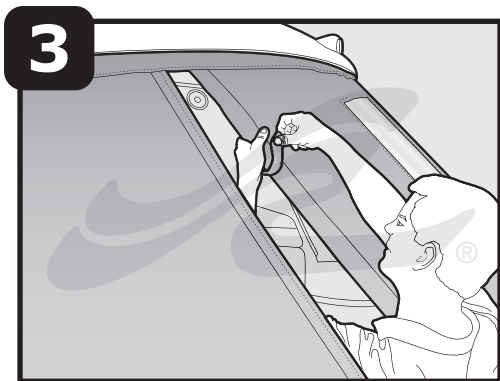
## **Aft Curtain Passageway**



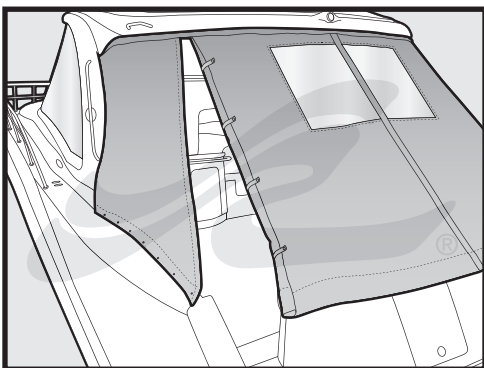
**Unzip the vertical zipper nearest to the rear passageway.**



**Roll aft curtain toward the center.**

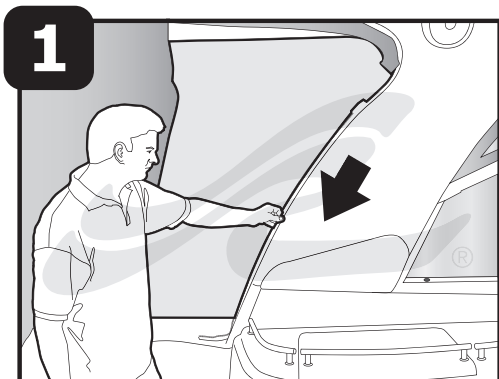


**Snap straps around the rolled canvas.**

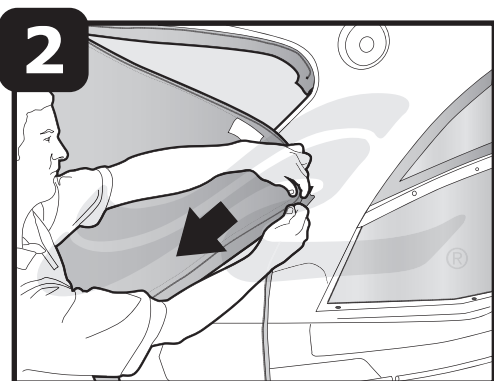


**Complete**

## Arch Valance Storage



**After removing the canvas from the arch, slide zipper valance from the track.**



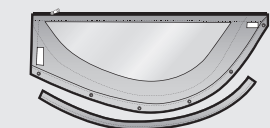
**Zip each valance to the correct side panel to prevent loss.**

**Note: Store zipper valances attached to the side panels until ready to re-install the Aft Curtain.**

# Motor Yacht



**1**

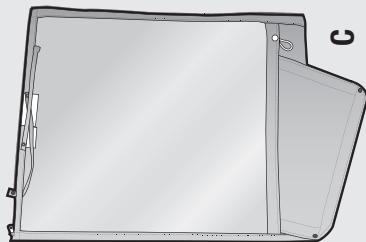


**A**

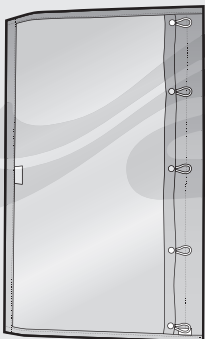
**Starboard**



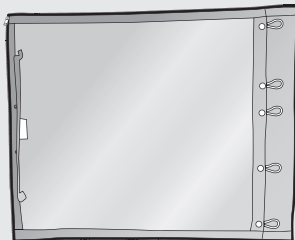
**B**



**C**



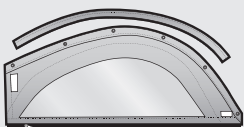
**D**



**E**

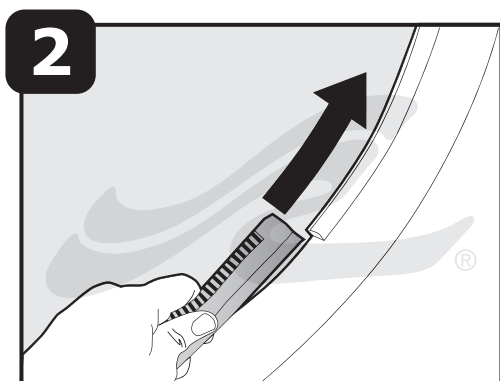


**F**

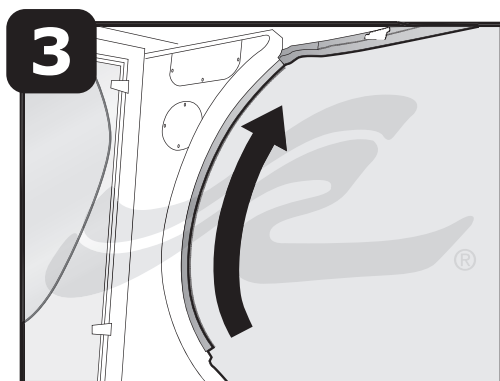


**G**

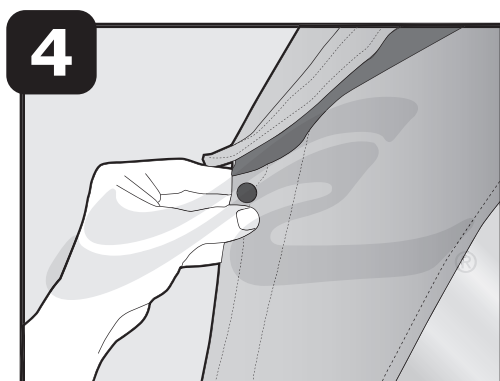
**Port**



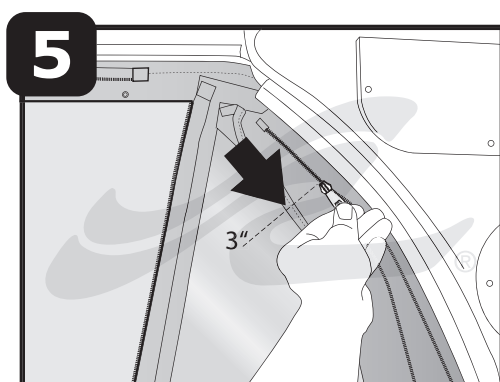
**Remove the zipper valance from G and insert into the track on the portside arch.**



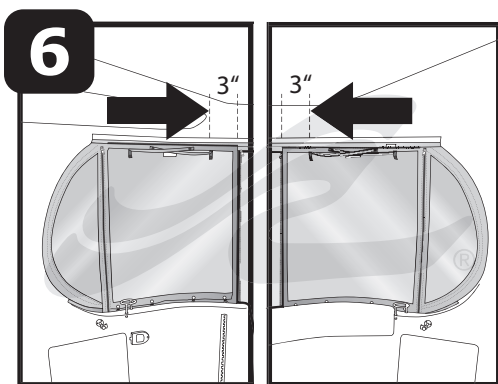
**Remove the zipper valance from A and insert into the track on the starboard side of the boat.**



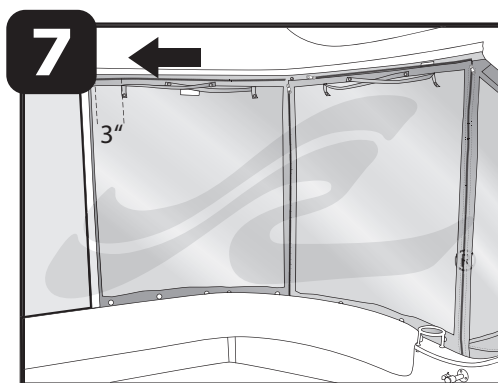
**Secure G and A to the boat by fastening the top snap on each piece.**



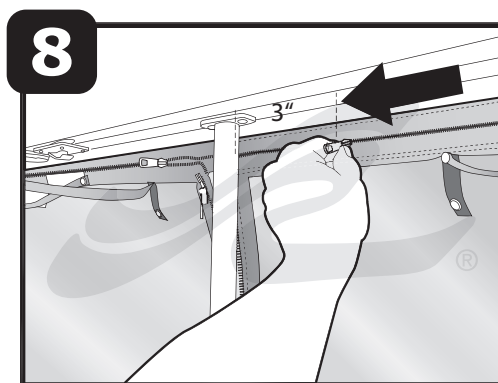
**Attach zippers and zip about 3" on both sides of the boat.**



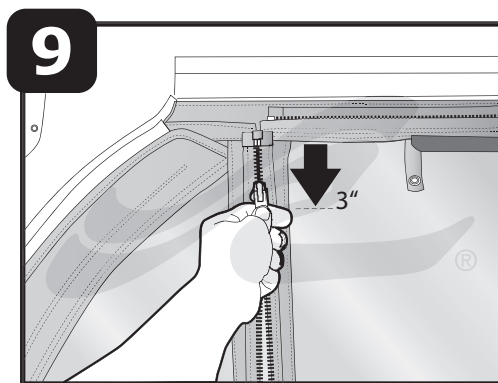
**Attach top zippers on F and B and zip all but 3".**



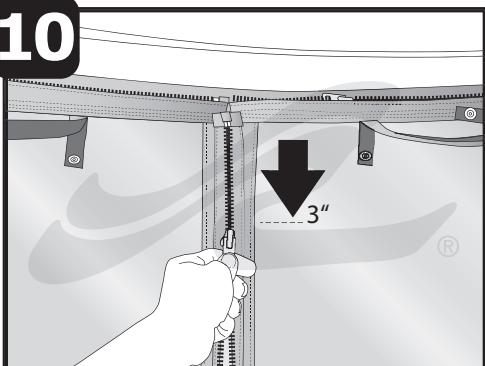
**Attach top zipper on E and C and zip all but 3".**



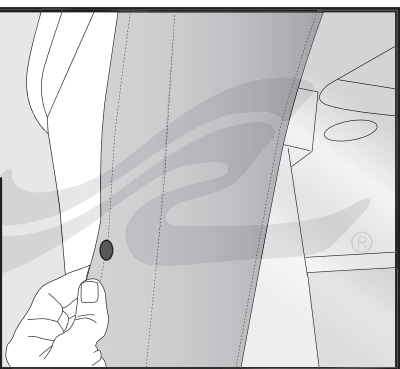
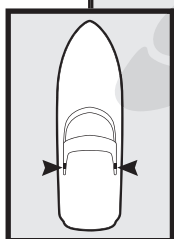
**Attach top zipper on center panel and zip all but 3".**



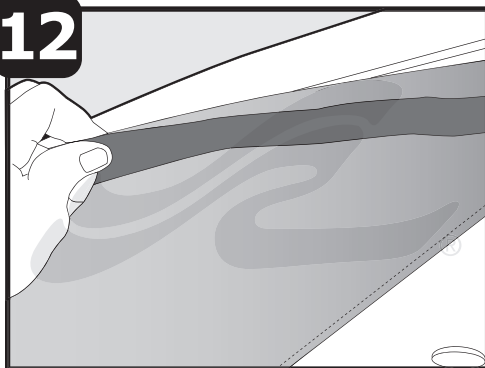
**Attach end vertical zippers (G and A) on both sides of the boat and zip about 3".**

**10**

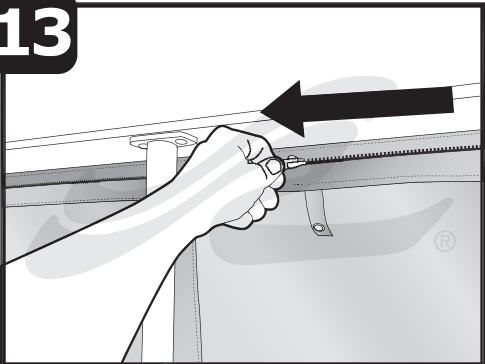
**Attach all vertical zippers. Zip about 3" beginning on the starboard side. If final zipper is difficult to close, loosen Velcro® strips on A and G and firmly pull visors together while zipping.**

**11**

**Complete snaps on A and G.**

**12**

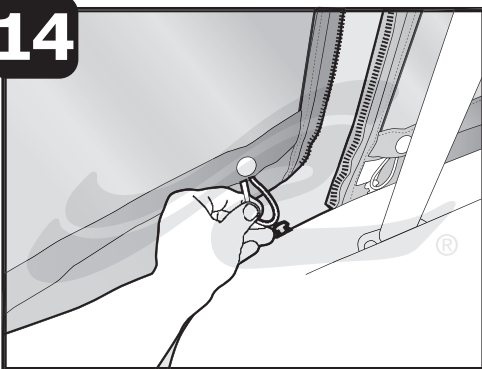
**Secure Velcro® strips on A and G outside the boat.**

**13**

**Complete all top zippers.**

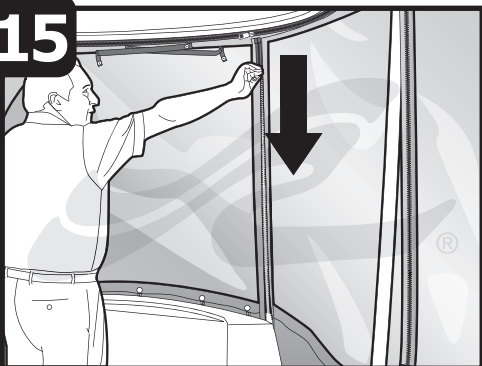


**14**



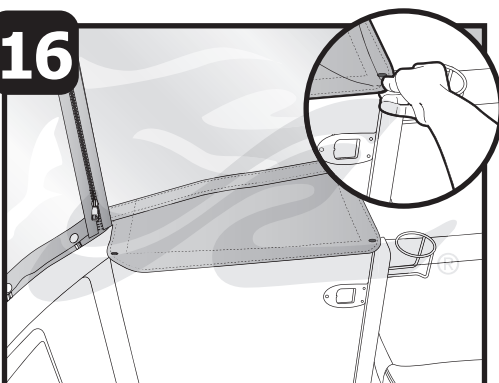
**Attach bungee straps.**

**15**

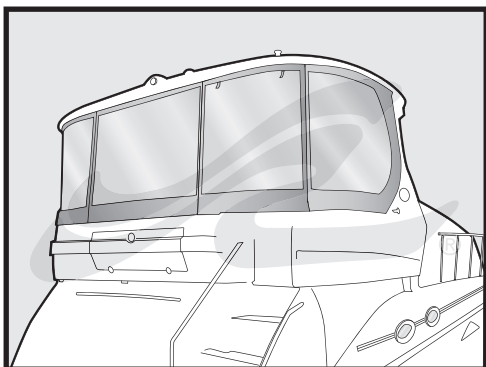


**Complete all vertical zippers.**

**16**



**Snap canvas over the passageway.**



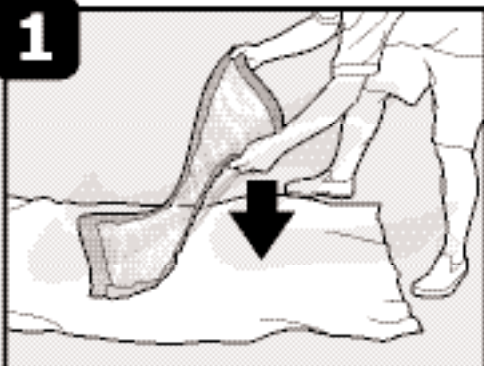
**Complete**

### **Using Your Seven-Piece Visor Package**

- 1. Visors B, C, D, E, and F may be used in an open position. Unhook bungee straps and unzip vertical zippers. Roll visors and secure with the straps provided.**
- 2. Visors B, D, and F may be replaced with the screened panels provided.**
- 3. When storing visors, remember to remove the zipper valances from the arches and zip onto visors A and G. See “Clear Vinyl Storage” for storage tips.**

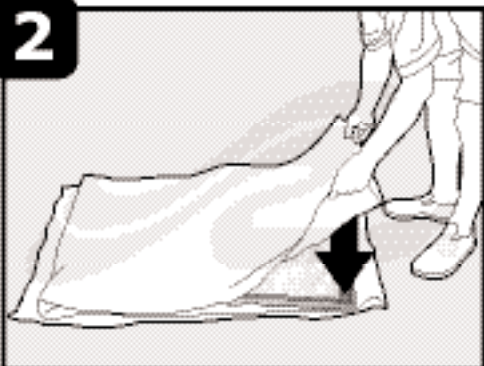
# Clear Vinyl Storage

**1**



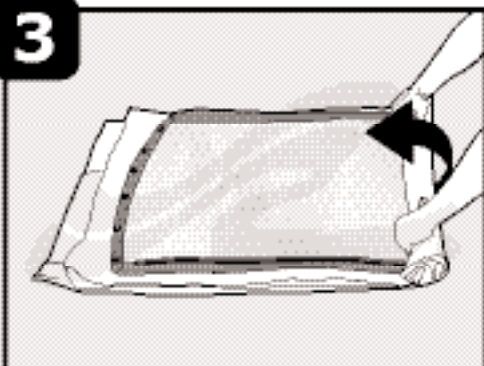
Lay vinyl on a soft material or towels (not provided).

**2**



Layer the clear vinyl panels so that vinyl does not touch other vinyl.

**3**



Roll, taking care not to place a zipper on vinyl.

**4**

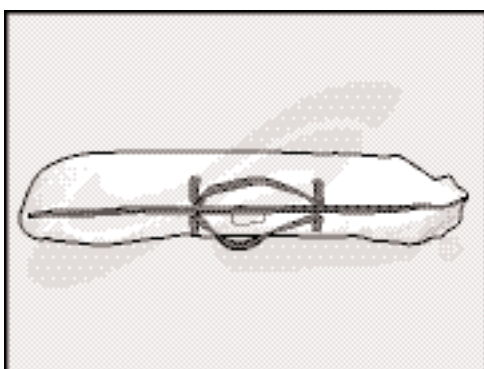


Place in storage bag.

**5**



**Stow in a dry place.**



**Complete**

**Note for Camper Tops and Aft Curtains: Fold canvas to cover the front and back of the clear vinyl. Roll so that no vinyl is stored next to vinyl.**