

THIS DOCUMENT IS THE PROPERTY OF BOSTON WHALER, INC. MFG. DEPT., EDGEWATER, FLORIDA. ALL RIGHTS ARE RESERVED. THIS DOCUMENT AND INFORMATION CONTAINED MUST NOT BE COPIED OR DISCLOSED TO OTHERS WITHOUT WRITTEN PERMISSION OF BOSTON WHALER, INC.

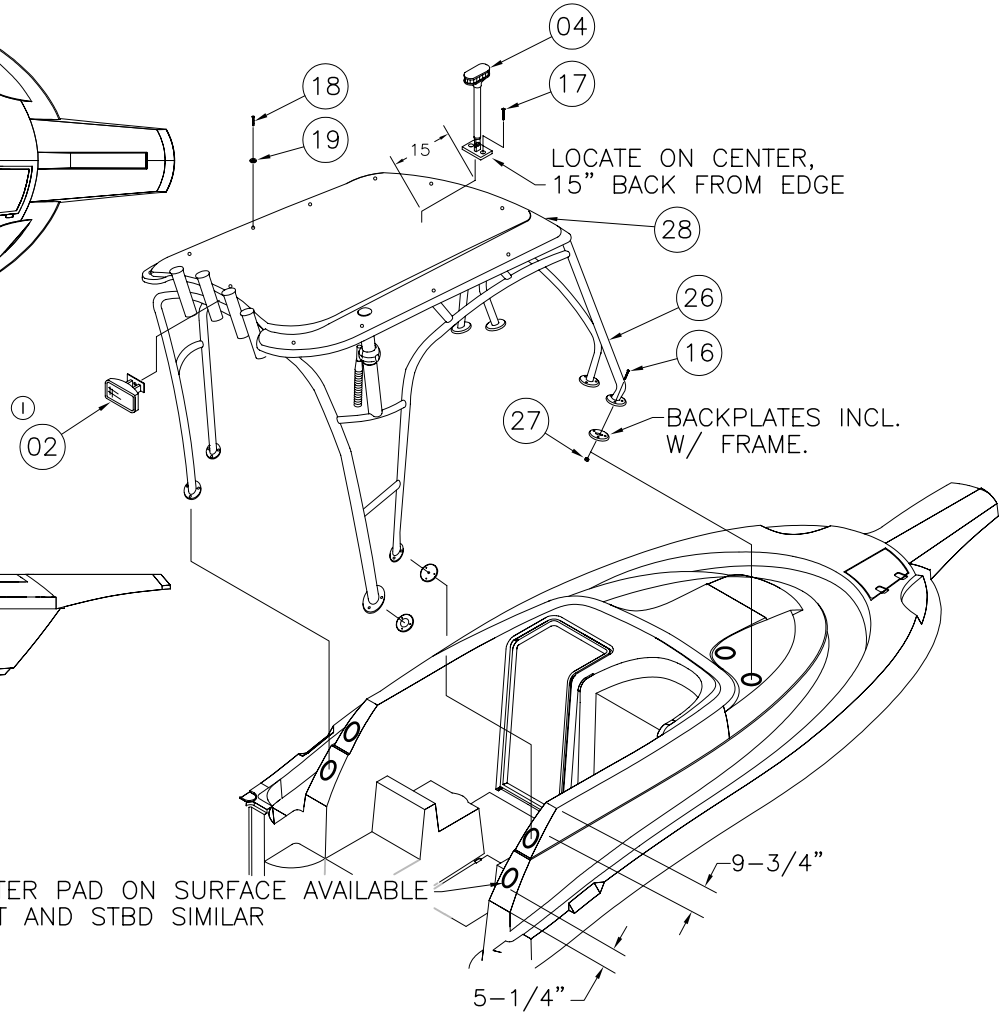
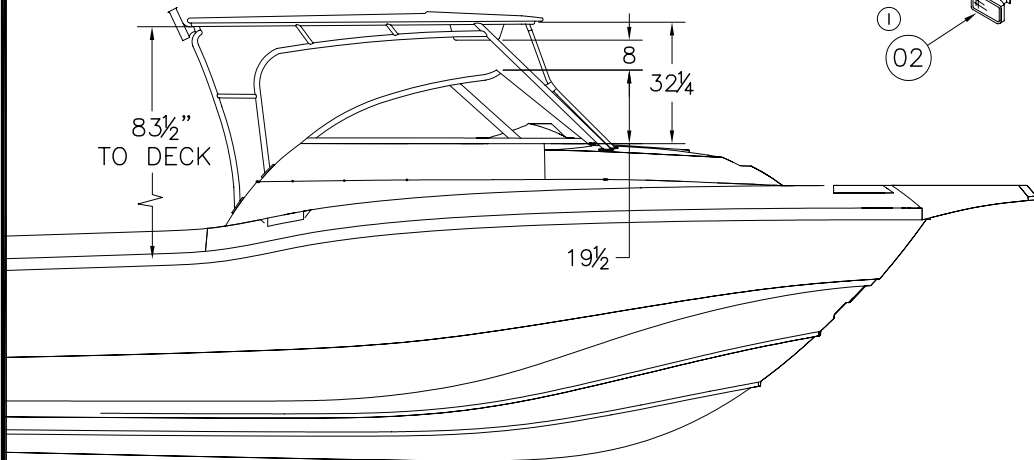
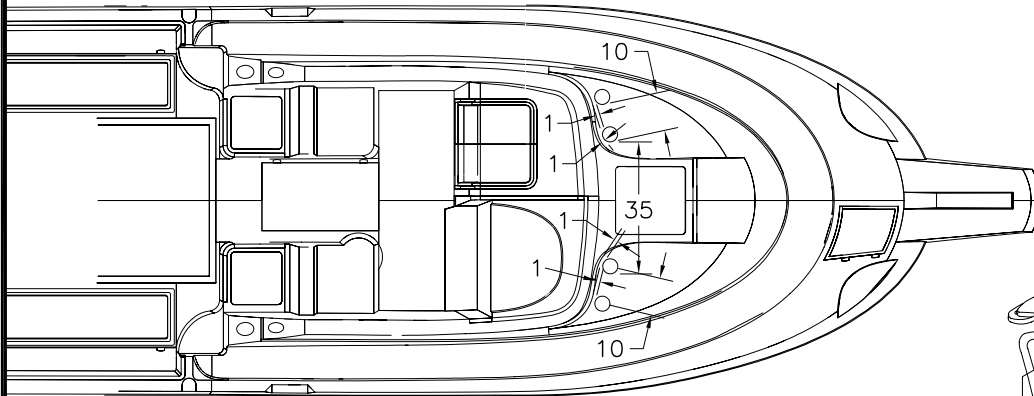
DWG. NO:
08401

REV.
K

CURRENT ECD
060228

NOTES:

REVISIONS					
REV.	DESCR.	BY	DATE	APPVD.	ECN NO.
G	2004 MODEL YEAR ENHANCEMENTS	HJR	05/05/03	-	030345
H	Changed Numbering System/Apply Att.Border.	AVM	05/14/03	ZAC	030319
I	MYE '05: #2 WAS 1040047, #3 WAS 1041268, #7 WAS 1617083, #24 WAS 1008796, #26 WAS 1617075 & ADDED ITEM #33	JM	04/20/04	SH	040148
J	CHANGE QTY ITEM # 29, SHEET 5, WAS 52 FT	SLJ	03/29/05	ME	050329
K	MODIFY DRAWING BORDER TO AN ATTRIBUTED BORDER	TS	03/01/06	AVM	060228



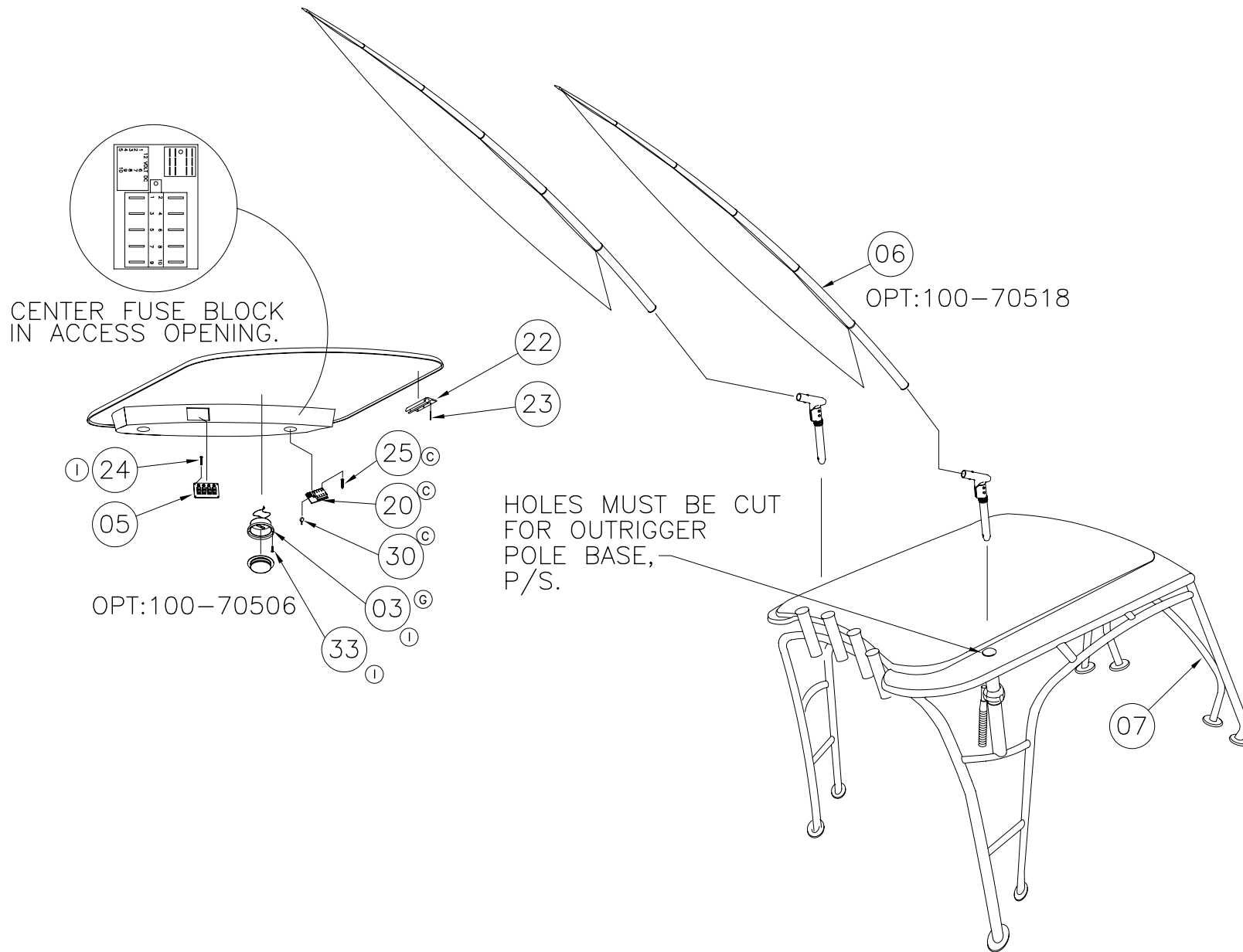
INTERPRET DIMENSIONS AND TOLERANCES PER ANSI Y 14.5 UNLESS OTHERWISE SPECIFIED DIMENSIONS ARE IN INCHES.
 TOLERANCES: ANGLES = ± .5° .XXX = ± .010
 .X = ± .1 .XX = ± .03 X = ± 1/16
 DO NOT SCALE DRAWING

CENTER PAD ON SURFACE AVAILABLE PORT AND STBD SIMILAR



CHECKED: RA	DATE: 7/04/01	DRAWN: H READ	DATE: 07/03/01	SCALE: NONE	BOAT MODEL 255CQ	MOLD NO.
APPD: LMS	DATE: 7/04/01	DWG. TITLE: HARDTOP CANVAS ASSEMBLY AND INSTALLATION			INIT. REL. ECN NO: 2276	DWG. NO: 08401
DESIGN: LMS	DATE: 7/04/01					SHT. NO. 1 of 5
INT. ENG: MG	DATE: 7/06/01					

NOTES:



THIS DOCUMENT IS THE PROPERTY OF BOSTON WHALER, INC. MFG. DEPT., EDGEWATER, FLORIDA. ALL RIGHTS ARE RESERVED. THIS DOCUMENT AND INFORMATION CONTAINED MUST NOT BE COPIED OR DISCLOSED TO OTHERS WITHOUT WRITTEN PERMISSION OF BOSTON WHALER, INC.

DWG. NO:
08401

REV.
K

CURRENT ECD
060228

NOTES:

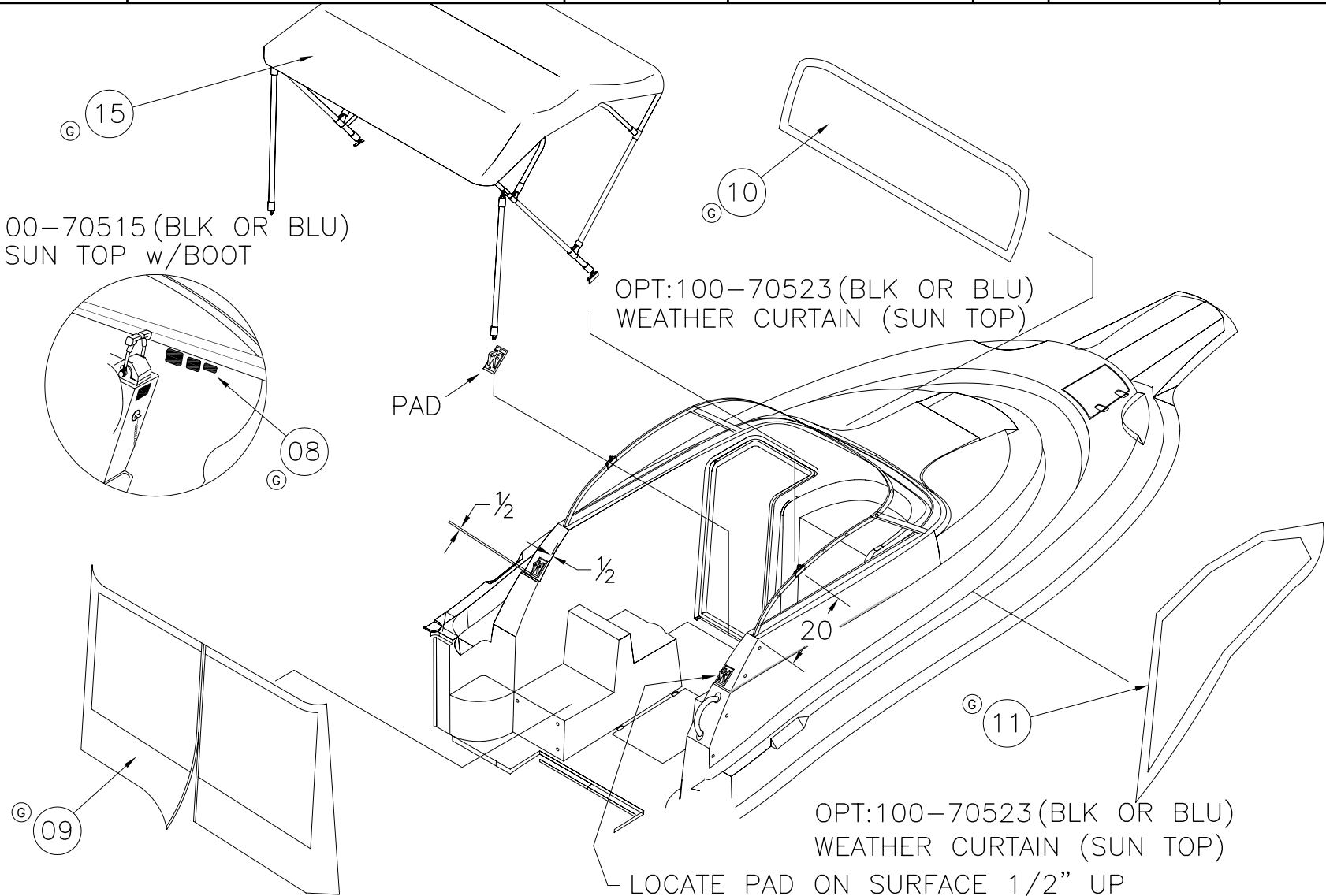
OPT:100-70515 (BLK OR BLU)
SUN TOP w/BOOT

OPT:100-70523 (BLK OR BLU)
WEATHER CURTAIN (SUN TOP)

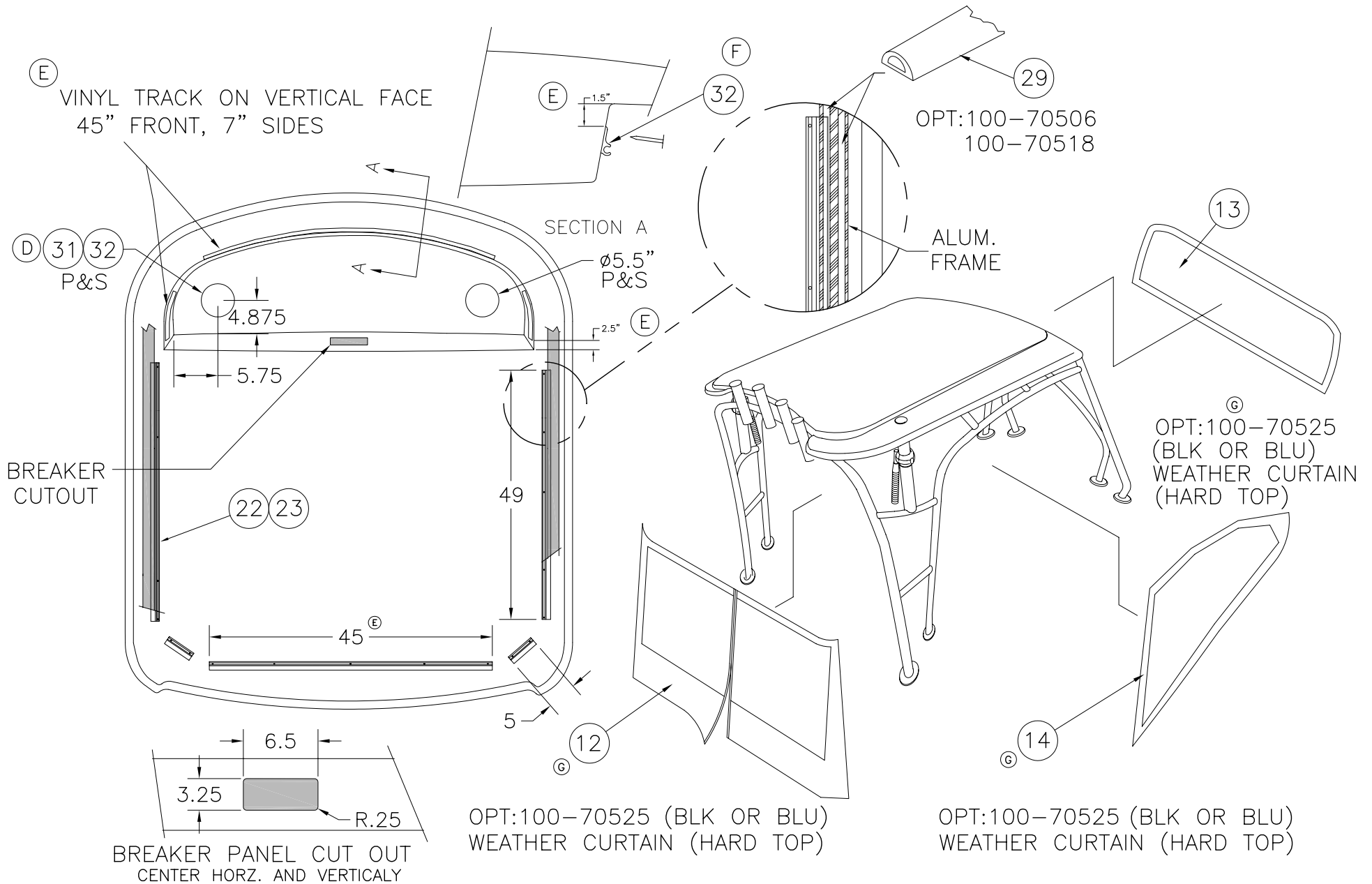
OPT:100-70523 (BLK OR BLU)
WEATHER CURTAIN (SUN TOP)

OPT:100-70523 (BLK OR BLU)
WEATHER CURTAIN (SUN TOP)

LOCATE PAD ON SURFACE 1/2" UP
FROM STYLE LINE AND 1/2" OUT
FROM INBOARD SURFACE, P/S.



NOTES:



THIS DOCUMENT IS THE PROPERTY OF BOSTON WHALER, INC. MFG. DEPT., EDGEWATER, FLORIDA. ALL RIGHTS ARE RESERVED. THIS DOCUMENT AND INFORMATION CONTAINED MUST NOT BE COPIED OR DISCLOSED TO OTHERS WITHOUT WRITTEN PERMISSION OF BOSTON WHALER, INC.

DWG. NO:
08401

REV.
K

CURRENT ECD
060228

NOTES:

Parts List					
	ITEM	QTY	U/M	DESCRIPTION	B.W.I. NO.
①	2	1	EA.	LIGHT HALOGEN 12V FLOOD 4"x 6" BLK	1690119
①	③	1	EA.	LIGHT, SGL DOME FLUSH MT SS WHT/RED	1761590
	4	1	EA.	LIGHT, NAV MASTHEAD COMBO VERT MT	1122563
③	5	1	EA.	PANEL, BW255CQ-04 SWITCH HARDTOP	1754877
	6	1	PR.	OUTRIGGER POLES 16'	1614270
①	7	1	EA.	FRAME, BW255CQ-05 H/TOP W/RADIAL OUTRIGGERS	1775382
	8	1	EA.	LABEL, BW WARNING CARBON MONOXIDE CANVAS ENCL.	1110675
③	9	1	EA.	CANVAS, BW255CQ-04 BIM TOP DROP CURT BLK	1753046
	9A	1	EA.	CANVAS, 255CQ-02 BIM TOP DROP CURT BLUE	1611771
③	10	1	EA.	CANVAS, BW255CQ-04 BIM TOP VISOR CURT BLK	1753047
	10A	1	EA.	CANVAS, BW255CQ-02 BIM TOP VISOR CURT BLUE	1611797
③	11	1	EA.	CANVAS, BW255CQ-04 BIM TOP SIDE CURT SET BLK	1753045
	11A	1	EA.	CANVAS, BW255CQ-04 BIM TOP SIDE CURT SET BLUE	1611813
③	12	1	EA.	CANVAS, BW255CQ-04 H/T DROP CURT BLK	1753048
	12A	1	EA.	CANVAS, BW255CQ-02 H/T DROP CURT BLUE	1611839
③	13	1	EA.	CANVAS, BW255CQ-04 H/T VISOR CURT BLK	1753050
	13A	1	EA.	BW255CQ-02 H/T VISOR CURT BLUE	1611854
③	14	1	EA.	CANVAS, BW255CQ-04 H/T SIDE CURT SET BLK	1753049
	14A	1	EA.	CANVAS, BW255CQ-02 H/T SIDE CURT SET BLUE	1611888
③	15	1	EA.	CANVAS, BW255CQ-04 BIM TOP W/BOOT BLK	1753044
③	15A	1	EA.	CANVAS, BW255CQ-04 BIM TOP W/BOOT BLUE	1753051
	16	24	EA.	SCREW, MACHINE 1/4"-20 x 1.5 PPH SC	1008598
	17	2	EA.	SCREW, TAPPING #10A x 3/4" PTH SC	1008762
	18	12	EA.	SCREW, CAP #1/4-20 x 2" HEX HD SC	1480102
	19	12	EA.	WASHER, FENDER 1/4" x 1.25" SC	1260678
③	20	1	EA.	FUSE BLOCK, 10-GNG BLADE-TYPE W/BLANK	1688102
	22	17.3	FT.	CANVAS, BW-00 SLIDE TRACK HARDTOP	1357730
③	23	26	EA.	SCREW, TAPPING #6 x 3/4" PFH SC	1010370
①	24	4	EA.	SCREW, TAPPING #6A x 1/2" PTH SC	1008796
③	25	4	EA.	SCREW, TAPPING #8A x 1" PTH SC	1008804
①	26	1	EA.	FRAME, BW255CQ-05 H/T BRUSHED FINISH	1770966
	27	24	EA.	NUT, HEX NYLON LOCK #1/4-20 SC	1007764
	28	1	EA.	FIBERGLASS HARDTOP	22-K036-00
③	29	25	FT.	TRIM-SEAL, #X1333BT SELF-ADH BLK	1232156
③	30	1	EA.	BOOT, PVC TERMINAL INSULATOR CAP RED	1689904
③	31	2	EA.	ACCESS PLATE, POLYPROP TWIST-OUT 5"	1016153
③	③	27	EA.	RIVET, POP/BLIND #3/16 X 5/8" ALUM	189415
①	33	2	EA.	SCREW, TAPPING #8 X 5/8" PTH SC	189415



INTERPRET DIMENSIONS AND TOLERANCES PER ANSI Y 14.5 UNLESS OTHERWISE SPECIFIED DIMENSIONS ARE IN INCHES.
 TOLERANCES: ANGLES = ± .5° .XXX = ± .010
 .X = ± .1 X = ± 1/16
 .XX = ± .03 X = ± 1/8
 DO NOT SCALE DRAWING

DRAWN: H READ

DATE: 07/03/01

SCALE: NONE

BOAT MODEL

MOLD NO.

255CQ

DWG. TITLE:

HARDTOP CANVAS ASSEMBLY AND INSTALLATION

INIT. REL. ECN NO:

DWG. NO:

SHT. NO.

2276

08401

5 of 5