

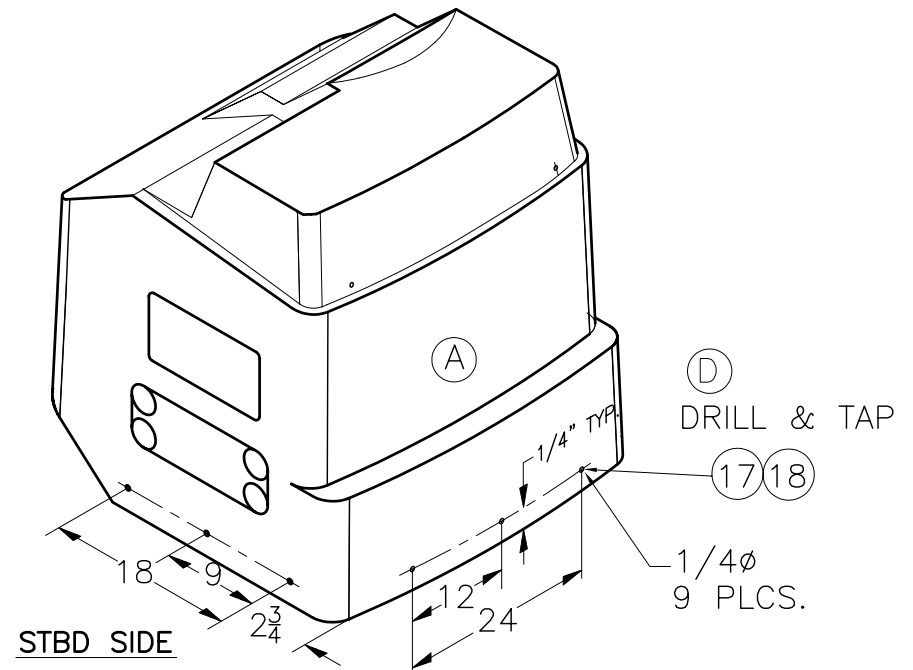
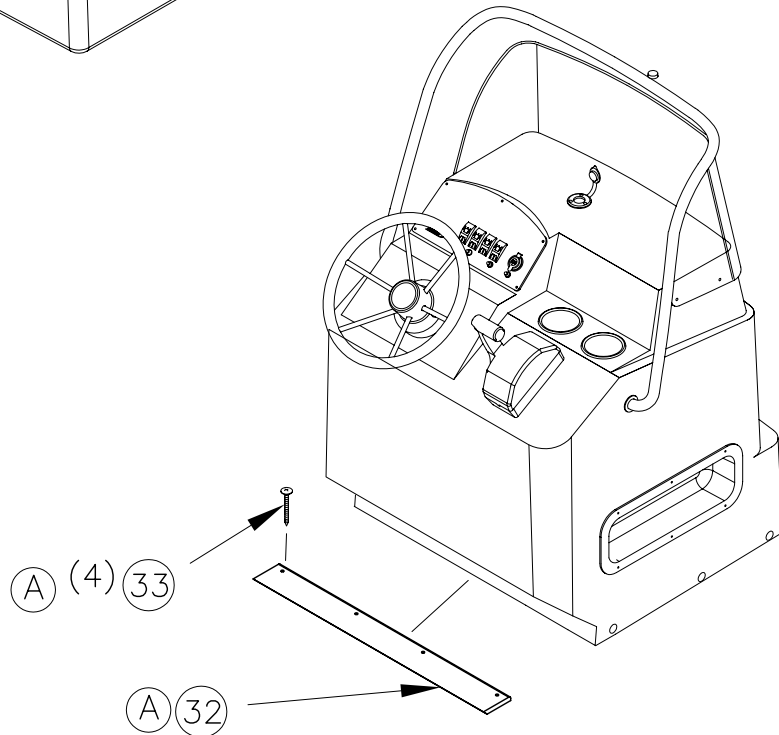
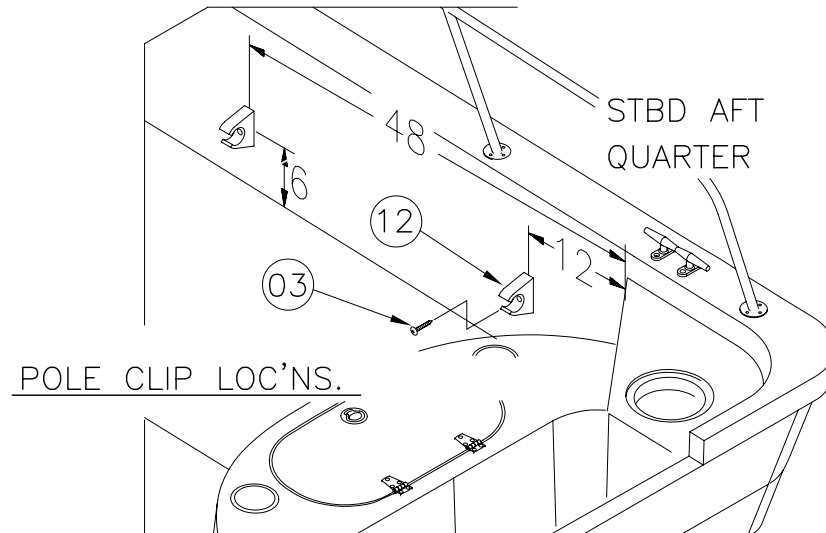
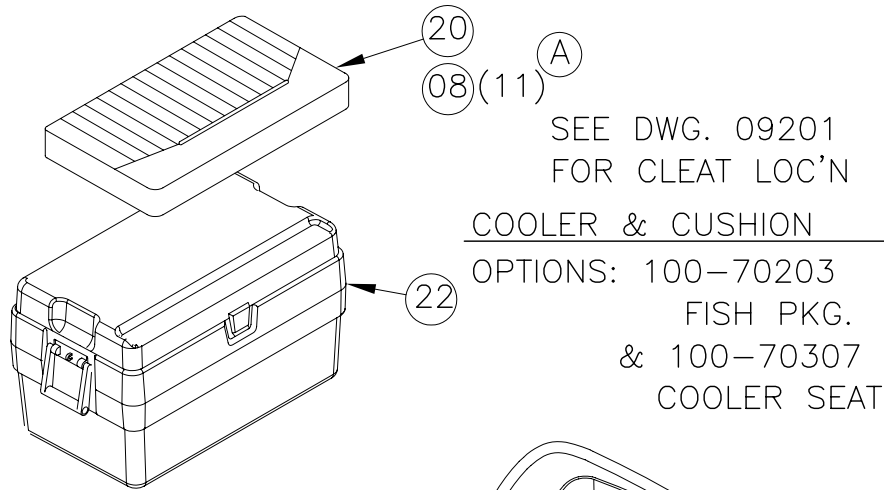


THIS DOCUMENT IS THE PROPERTY OF BOSTON WHALER, INC. MFG. DEPT., EDGEWATER, FLORIDA. ALL RIGHTS ARE RESERVED. THIS DOCUMENT AND INFORMATION CONTAINED MUST NOT BE COPIED OR DISCLOSED TO OTHERS WITHOUT WRITTEN PERMISSION OF BOSTON WHALER, INC.

DWG. NO:  
11201

REV.  
E

CURRENT ECD  
051148



INTERPRET DIMENSIONS AND TOLERANCES PER ANSI Y 14.5 UNLESS OTHERWISE SPECIFIED DIMENSIONS ARE IN INCHES.  
TOLERANCES: ANGLES =  $\pm .5^\circ$  .XXX =  $\pm .010$   
.X =  $\pm .1$  X =  $\pm 1/16$   
.XX =  $\pm .03$   
DO NOT SCALE DRAWING

DRAWN: M.ZAFFUTO

DATE: 08/31/05

SCALE: NONE

BOAT MODEL

MOLD NO.

150MT

DWG. TITLE:

FINAL ASSEMBLY

INIT. REL. ECN NO:

DWG. NO:

SHT. NO.

050577

11201

2 OF 3

## PARTS LIST

ITEM	QTY.	U/M	DESCRIPTION	B.W.I. NO.
1	2	EA.	RAIL, SIDE BW150MT-06 SS HI-PATT	1811610
2	2	EA.	RIVET, POP/BLIND #3/16 X 3/8" SS	0192120
3	2	EA.	SCREW, TAPPING #10A X 1" PTH SC	1008739
4	9	EA.	SCREW, MACHINE #1/4-20 X 1.5" PPH SC	1008598
5	36	EA.	SCREW, MACHINE #1/4-20 X 1" PPH SC	1008580
6	60	EA.	SCREW, TAP #10A X 1.5" W/STP EPXY ORNG PFH SC	1814515
Ⓔ	7	3	EA. SCREW, TAPPING #8A X 1" PTH SC	1008804
Ⓐ	8	21	EA. SNAP STUD, W/#8 X 3/8" PH BR/NI/SS	203786
9	1	EA.	EYE, STRAP EYE TIE-DOWN 5/16" CHR/ZINC	861120
10	1	EA.	RAIL, BOW BW150MT-06 SS	1807955
11	2	EA.	RAIL, SIDE BW150MT-06 SS	1807953
12	1	PR.	CLIP, POLE STRG BLK - MAST LIGHT	0590646
13	1	EA.	CAP, RUBRAIL BW150SP-03 TRNSM TRIM W/ NOTCH	1743356
14	1	EA.	CANVAS, BW17MTK-05 CNSL CVR BLK	1771130
15	1	EA.	INSERT, RUB RAIL CHAR FLEX 40'	1020817
16	1	EA.	RUBRAIL, PLASTIC CHAR 40'	1020858
Ⓓ	17	9	EA. SCREW, MACHINE #1/4-20 X 1.5" PFH SC	1215052
18	9	EA.	WASHER, FINISH #12 SS	0958868
19	1	EA.	CUSH, BW150SP-05 BOW	1781376
20	1	EA.	CUSH, BW150MT-06 COOLER SEAT 36QT	1808122
21	1	EA.	CANVAS, BW17MTK-05 CNSL CVR BLUE	1771131
22	1	EA.	COOLER, 36QT	0814012
23	1	EA.	CANVAS, BW170MT-05 REV'BL SEAT CVR BLK	1771128
24	1	EA.	CANVAS, BW170MT-05 REV'BL SEAT CVR BLUE	1771129
25	1	EA.	CANVAS, BW17MTK-05 CNSL CVR W/COOLRCUTOUT BLK	1776599
26	1	EA.	CANVAS, BW17MTK-05 CNSL CVR W/COOLRCUTOUT BLUE	1776601
27	1	EA.	CANVAS, BW150MT-06 BIM TOP W/BOOT BLK	1809651
28	1	EA.	CANVAS, BW150MT-06 BIM TOP W/BOOT BLUE	1809652
29	1	EA.	REV. PILOT SEAT SUB-ASSY.	09251
30	1	EA.	CAP, RUBRAIL BW150SP-02 TRNSM TRIM	1691318
31	2	EA.	SCREW, TAPPING #10A X 1.5" PTH SC	1008747
Ⓐ	32	1	EA. PANEL, HDPE BW150MT-06 CLSOUT CNSL BASE	1816852
Ⓐ	33	4	EA. SCREW, TAPPING #10A X 1" PPH SC	1213131
ⒸⒷ	34	2	EA. DRINKHOLDR, PLAS W/DRAIN DEEP XLG SZ BLK	1727419



INTERPRET DIMENSIONS AND TOLERANCES PER ANSI Y 14.5 UNLESS OTHERWISE SPECIFIED DIMENSIONS ARE IN INCHES.  
 TOLERANCES: ANGLES = ± .5° .XXX = ± .010  
 .X = ± .1 X = ± 1/16  
 .XX = ± .03 X = ± 1/16  
 DO NOT SCALE DRAWING

DRAWN: M.ZAFFUTO

DATE: 08/31/05

SCALE: NONE

BOAT MODEL

MOLD NO.

150MT

DWG. TITLE:

FINAL ASSEMBLY

INIT. REL. ECN NO:

DWG. NO:

SHT. NO.

050577

11201

3 OF 3