

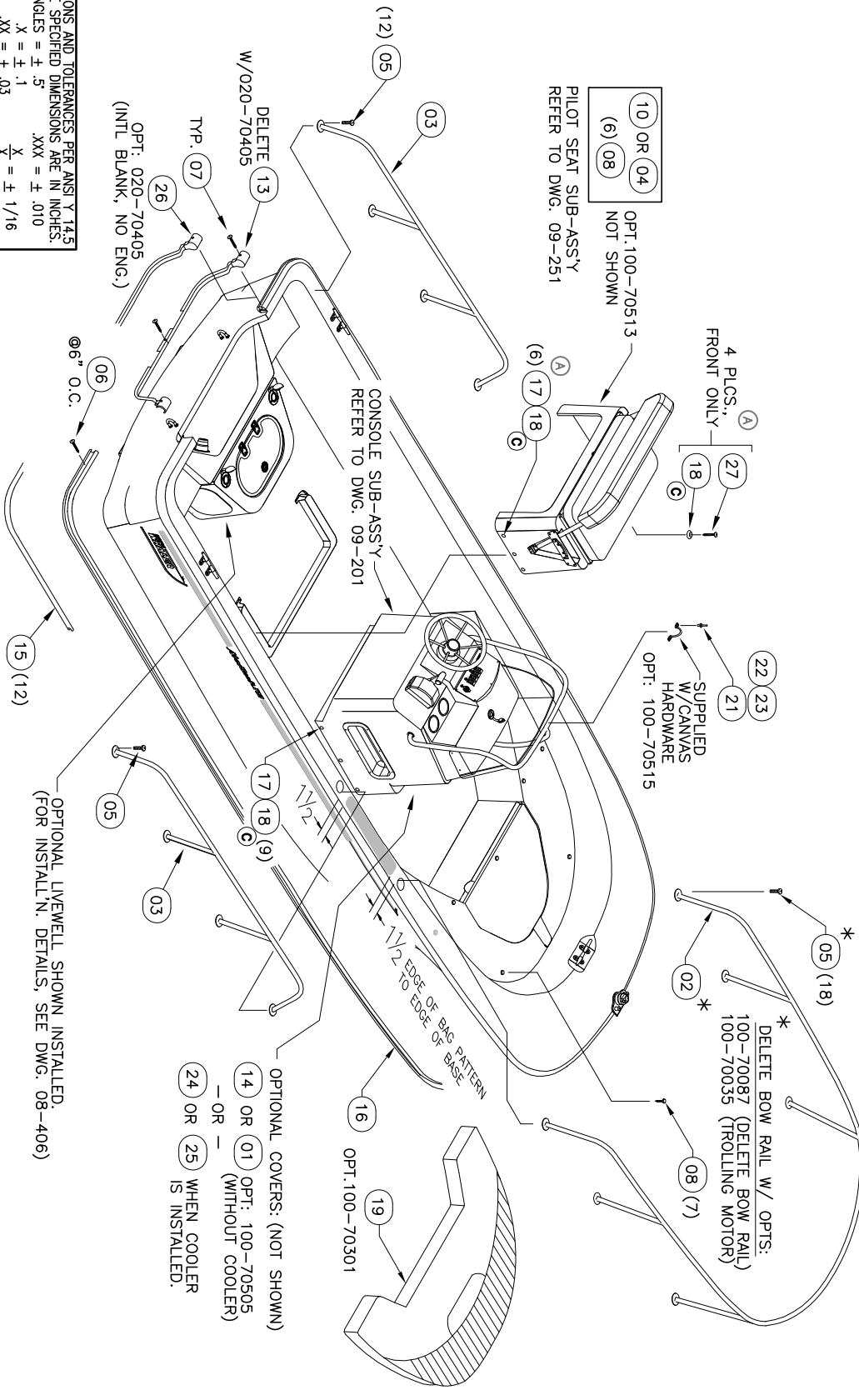
THIS DOCUMENT IS THE PROPERTY OF BOSTON WHALER, INC. MFG. DEPT., EDgewater, FLORIDA. ALL RIGHTS ARE RESERVED. THIS DOCUMENT AND INFORMATION CONTAINED MUST NOT BE COPIED OR DISCLOSED TO OTHERS WITHOUT WRITTEN PERMISSION OF BOSTON WHALER, INC.

DWG. NO: 11201  
 REV. H  
 CURRENT ECD 08115596

**NOTES:**

1. REFER TO DWG. 07-401, WIRING DIAGRAM" FOR CONSOLE TO HULL CONNECTIONS.
2. ALL DRILLED HOLES (FOR MOUNTING COMPONENTS & HARDWARE TO HULL SHALL BE SEALED W/ WHITE SILICONE SEALANT WHEN INSTALLED.
3. THE CANVAS MANUFACTURERS' INSTRUCTIONS (INCL. W/ CANVAS) SHALL BE USED WHEN OPTIONAL CANVAS IS INSTALLED.

REV.	DESCR.	BY	DATE	APPVD.	ECN NO.
A	#17 WAS QTY. 15; #27 ADDED.	RD	3/15/07	VPK	06093674
B	#19 WAS 1781378. ADDED SUN LOUNGE OPT. TO BOW. AND PG.2	JFH	5/02/07	VPK	06093674
C	#18 WAS 0958868	JFH	5/10/07	VPK	06093674
D	CHANGED PT FOR ITEM 1, 14, 24, TO 1897590, 1897389, 1898520, 1898519	TKJ	7/10/07	VPK	07074429
E	CHANGED POLE CLIP LOCATION DIMS, WERE 12" & 88", SHEET 2	SLJ	11/06/07	RA	07104653
F	ADDED ITEMS 28,29,30,31,32 ON SHT 3	TKJ	1/16/08	AF	07104607
G	CHANGED PT#1898520,1898519 TO 1951956,1951585	TKJ	9/16/08	AF	08085449
H	DELETED PT# 1909905,1742735,1009786,1260769,1008606	TKJ	11/5/08	AF	08115596



INTERPRET DIMENSIONS AND TOLERANCES PER ANSI Y 14.5 UNLESS OTHERWISE SPECIFIED DIMENSIONS ARE IN INCHES. TOLERANCES: ANGLES = ± .5°  
 .X = ± .1  
 .XX = ± .03  
 .XXX = ± .010  
 X = ± 1/16  
 XX = ± 1/16  
 XXX = ± 1/16  
 DO NOT SCALE DRAWING

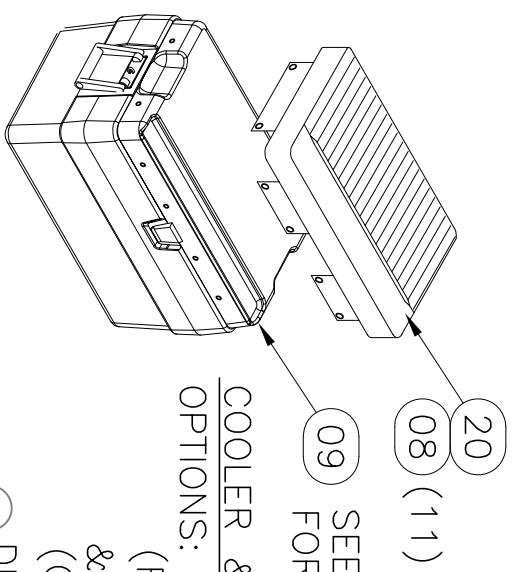
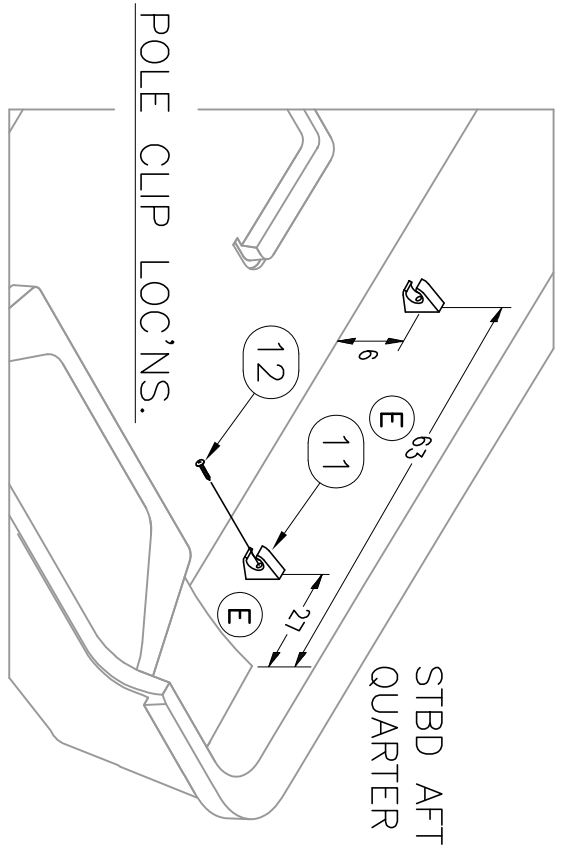
**BOSTON WHALER**  
 PRODUCT DEV. & MFG. ENGINEERING GROUP

CHECKED: R. AVILA	DATE: 2/14/07	DRAWN: R. DURHAM	DATE: 2/06/07	SCALE: NONE	BOAT MODEL: 170MT	MOLD NO.:
APPD: K. RANIERI	DATE: 2/14/07	DWG. TITLE: FINAL ASSEMBLY			INT. REL. ECN NO: 06093674	DWG. NO: 11201
DESIGN: V. KNIGHT	DATE: 2/21/07					SHT. NO. 1 OF 3
INT. ENG: M. GATICA	DATE: 2/22/07					

THIS DOCUMENT IS THE PROPERTY OF BOSTON WHALER, INC. MFG. DEPT., EDGEWATER, FLORIDA. ALL RIGHTS ARE RESERVED. THIS DOCUMENT AND INFORMATION CONTAINED MUST NOT BE COPIED OR DISCLOSED TO OTHERS WITHOUT WRITTEN PERMISSION OF BOSTON WHALER, INC.

DWG. NO:  
11201

REV. H  
CURRENT ECD  
08115596



SEE DWG. 09-201 FOR CLEAT LOC'N

COOLER & CUSHION  
OPTIONS: 100-70203 (FISHING PKG.) & 100-70307 (COOLER SEAT)

ⓑ DELETE W/SUN LOUNGE  
OPT: 100-70350



INTERPRET DIMENSIONS AND TOLERANCES PER ANSI Y 14.5 UNLESS OTHERWISE SPECIFIED DIMENSIONS ARE IN INCHES.  
TOLERANCES:  
ANGLES = ± .5°  
X = ± .1  
XX = ± .03  
XXX = ± .010  
X/ = ± 1/16  
DO NOT SCALE DRAWING

DRAWN: R. DURHAM  
DATE: 2/06/07  
SCALE: NONE  
DWG. TITLE:  
FINAL ASSEMBLY

BOAT MODEL: 170MT  
MOLD NO.:  
INIT. REL. ECN NO.: 06093674  
DWG. NO.: 11201  
SHT. NO.: 2 OF 3

THIS DOCUMENT IS THE PROPERTY OF BOSTON WHALER, INC., MFG. DEPT., EDgewater, FLORIDA. ALL RIGHTS ARE RESERVED. THIS DOCUMENT AND INFORMATION CONTAINED MUST NOT BE COPIED OR DISCLOSED TO OTHERS WITHOUT WRITTEN PERMISSION OF BOSTON WHALER, INC.

DWG. NO: 11201  
 REV: H  
 CURRENT ECD: 08115596

**PARTS LIST**

ITEM	STD.	QTY.	U/M	DESCRIPTION	B.W.I. NO.
①	-	-	-	EA. CANVAS, BW170MT-08 CNSL CVR BLUE	1897590
2	1	-1	-1	EA. RAIL, BOW BW170MT-06 SS	1817768
3	2	-	-	EA. RAIL, SIDE BW170MT-02 AFT	1689429
4	-	-	1	EA. CANVAS, BW170MT-05 REV'BL SEAT CVR BLUE	1771129
5	42	-18-18	-	EA. SCREW, MACHINE #1/4-20 X 1" PPH SC	1008580
6	90	-	-	EA. SCREW, TAP #10A X 1.5" W/STP EPHY ORNG PFH	1814515
7	5	-	6	EA. SCREW, TAPPING #8A X 1" PTH SC	1008804
8	-	-11	11	EA. SNAP STUD, W/#8 X 3/8" PH BR/NI/SS	0203786
9	-	-1	1	EA. COOLER, 72QT WHI	1016427
10	-	-	1	EA. CANVAS, BW170MT-05 REV'BL SEAT CVR BLK	1771128
11	1	-	-	PR. CLIP, POLE STRG BLK - MAST LIGHT	0590646
12	2	-	-	EA. SCREW, TAPPING #10A X 1" PTH SC	1008739
13	1	-	-1	EA. CAP, RUBRAIL BW170MT-03 TRNSM TRIM W/NOTCH	1743357
14	-	-	1	EA. CANVAS, BW170MT-08 CNSL CVR BLK	1897589
15	1	-	-	EA. INSERT, RUB RAIL CHAR FLEX 40'	1020817
16	1	-	-	EA. RUBRAIL, PLASTIC CHAR 40'	1020858
17	15	-	-	EA. SCREW, TAPPING #14A X 1.5" PFH SC	1008382
18	19	-	-	EA. WASHER, FLANGE #14 SC	1305762
19	-	1	-	EA. CUSH, BW170MT-08 BOW	1898228
20	-	-1	1	EA. CUSH, BW17MTK-05 COOLER SEAT 72QT	1781380
21	-	-	2	EA. RIVET, POP/BLIND #3/16 X 3/8" SS	0192120
22	-	-	1	EA. CANVAS, BW17MTK-04 BIM TOP W/BOOT BLK	1753197
23	-	-	1	EA. CANVAS, BW17MTK-04 BIM TOP W/BOOT BLUE	1756018
24	-	-	*	EA. CANVAS, 170MT CNSL CVR W/CLR BLUE	1951956
25	-	-	*	EA. CANVAS, 170MT-09 CNSL CVR W/COOLER BLK	1951585
26	-	-	1	EA. CAP, RUBRAIL BW170MT-02 TRNSM TRIM	1690126
27	4	-	-	EA. SCREW, TAPPING #14A X 1" PFH SC	1008366
28	2	-	-	EA. BRACKET, ALUM BW170MT-08	1909905
29	4	-	-	EA. SCREW, TAPPING #14A X 2"	1742735
30	4	-	-	EA. NUT, LOCK #1/4-20 SC STD	1009786
31	8	-	-	EA. WASHER, FLAT #1/4" SC	1260769
32	4	-	-	EA. SCREW, MACHINE #1/4-20 X 1.75" PPH SC	1008606



INTERPRET DIMENSIONS AND TOLERANCES PER ANSI Y 14.5 UNLESS OTHERWISE SPECIFIED DIMENSIONS ARE IN INCHES.  
 TOLERANCES: ANGLES = ± .5°  
 X = ± .1  
 XX = ± .03  
 XXX = ± .010  
 X/2 = ± 1/16  
 DO NOT SCALE DRAWING

DRAWN: R.DURHAM DATE: 2/06/07 SCALE: NONE  
 DWG. TITLE: FINAL ASSEMBLY

BOAT MODEL: 170MT  
 INT. REL. EGN NO.: 06093674  
 MOLD NO.: 11201  
 SH. NO.: 3 OF 3