

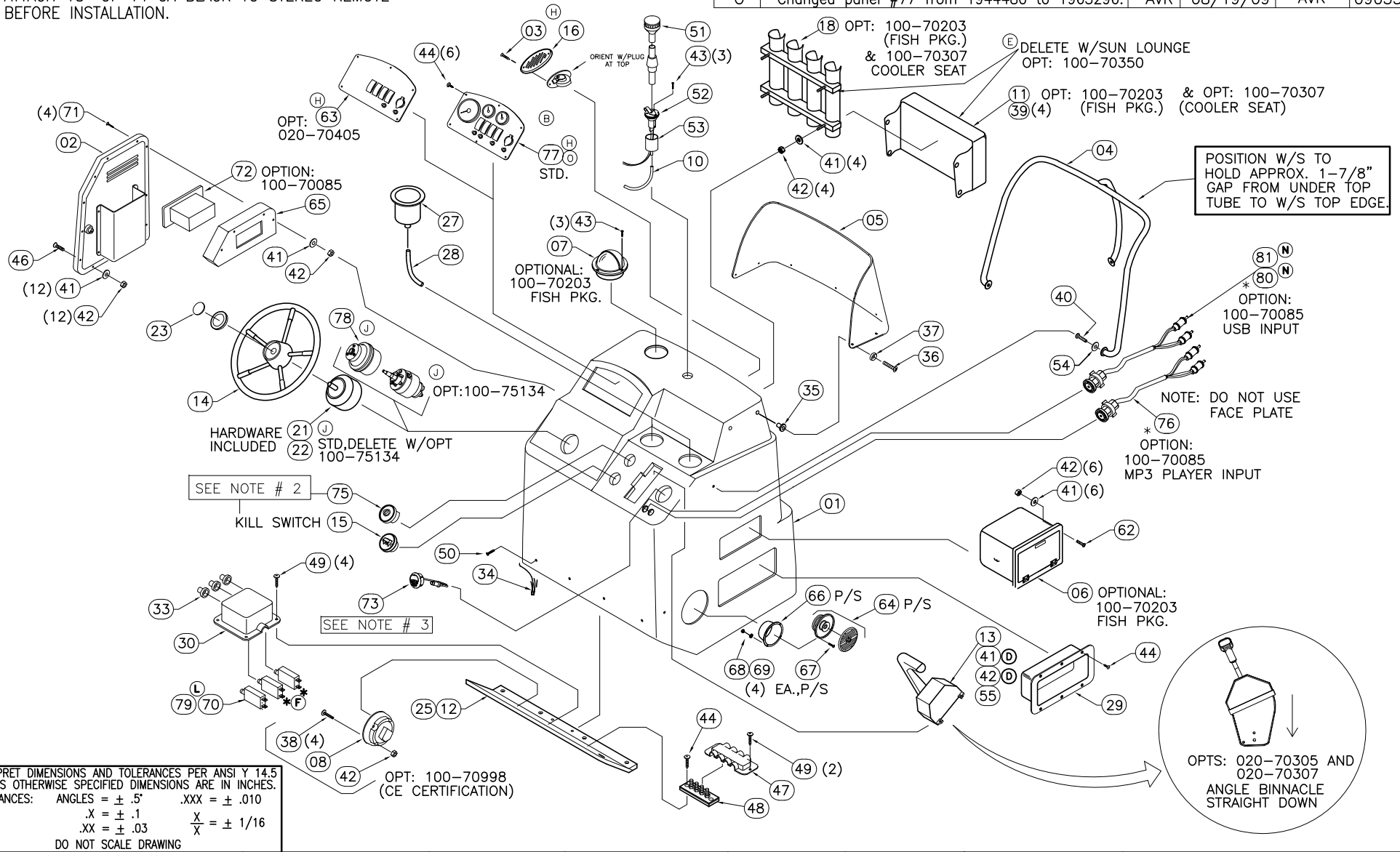
THIS DOCUMENT IS THE PROPERTY OF BOSTON WHALER, INC. MFG. DEPT., EDGEWATER, FLORIDA. ALL RIGHTS ARE RESERVED. THIS DOCUMENT AND INFORMATION CONTAINED MUST NOT BE COPIED OR DISCLOSED TO OTHERS WITHOUT WRITTEN PERMISSION OF BOSTON WHALER, INC.

DWG. NO: 09201  
 REV. 0  
 CURRENT ECD 09035790

NOTES:

1. REFER TO DWG. 01-251 FOR ALL HOSE CUT LENGTHS.
2. DELETE W/OPT 020-70405  
 DRILL WHEN OPT 020-70405 W/100-70005 IS ORDERED
3. ATTACH 18" OF 14 GA BLACK TO STEREO REMOTE BEFORE INSTALLATION.

REVISIONS					
REV.	DESCR.	BY	DATE	APPVD.	ECN NO.
L	ADDED ITEM 79 & CHANGED PT#1750593 TO 670497	TJ	8/26/08	AF	08085438
M	CHANGED PT#1010172,1326222,1009810 TO 1008713,1326297, 1260728	TJ	1/13/09	AF	08125661
N	WYE'10 ADDED #80, #1, #72 WAS 1854318, #73 WAS 1803894, #76 WAS 1849383	BH	7/14/09	RW	09066031
O	Changed panel #77 from 1944480 to 1963296.	AVR	08/19/09	AVR	09035790



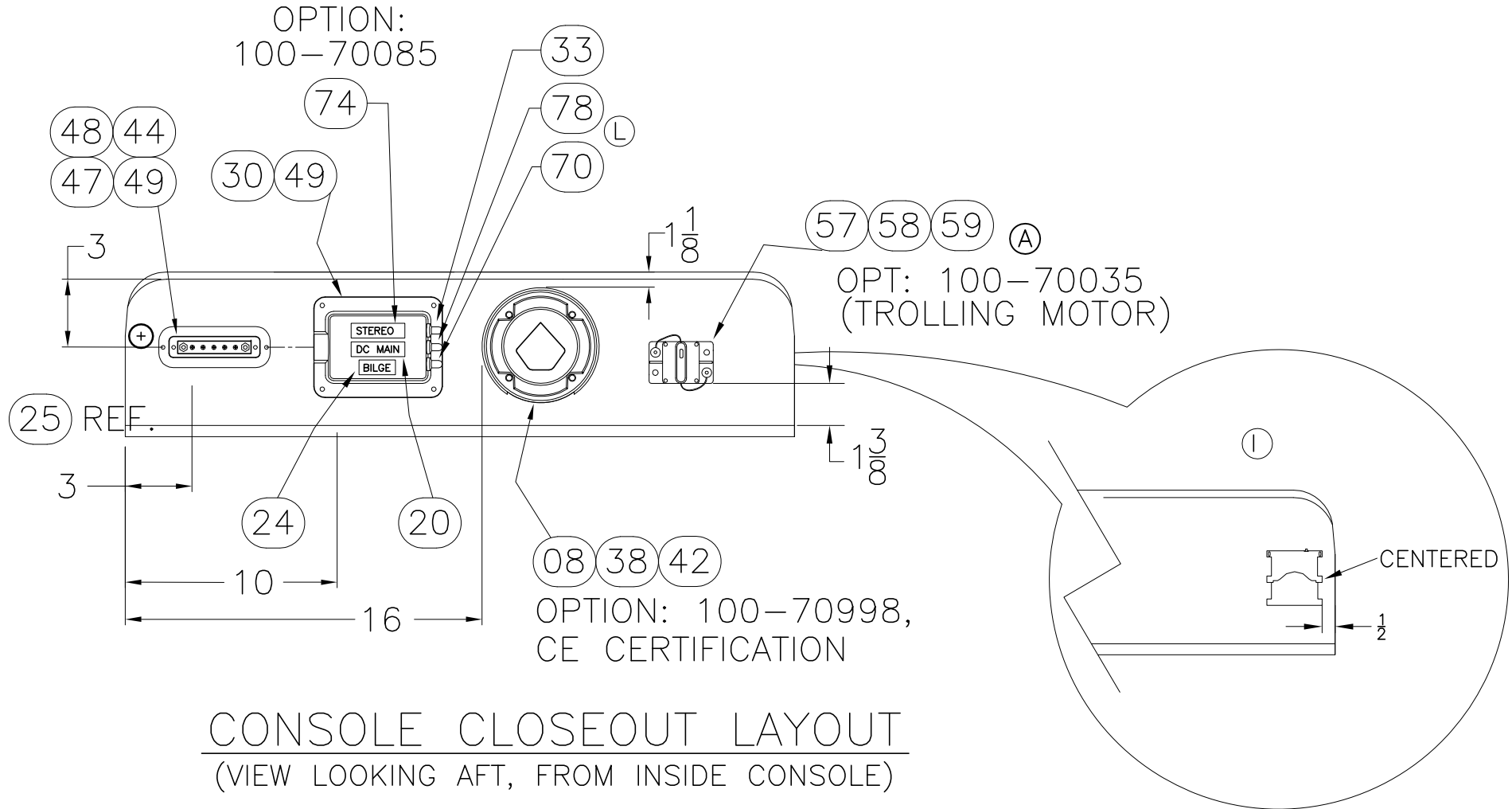
INTERPRET DIMENSIONS AND TOLERANCES PER ANSI Y 14.5 UNLESS OTHERWISE SPECIFIED DIMENSIONS ARE IN INCHES.  
 TOLERANCES: ANGLES = ± .5° .XXX = ± .010  
 .X = ± .1 .XX = ± .03  
 .XX = ± .03 X/X = ± 1/16  
 DO NOT SCALE DRAWING



CHECKED: B. GARZA	DATE: 1/30/07	DRAWN: R.DURHAM	DATE: 01/23/07	SCALE: NONE	BOAT MODEL	MOLD NO.
APPD: K. RANIERI	DATE: 1/31/07	DWG. TITLE:	CONSOLE ASSEMBLY		170MT	
DESIGN: V. KNIGHT	DATE: 2/1/07				INIT. REL. ECN NO:	DWG. NO:
INT. ENG: M. GATICA	DATE: 2/5/07				06093674	09201
					SHT. NO.	1 OF 4

NOTES:

①  
\*SHIFT 3 COMPONENTS TO THE LEFT



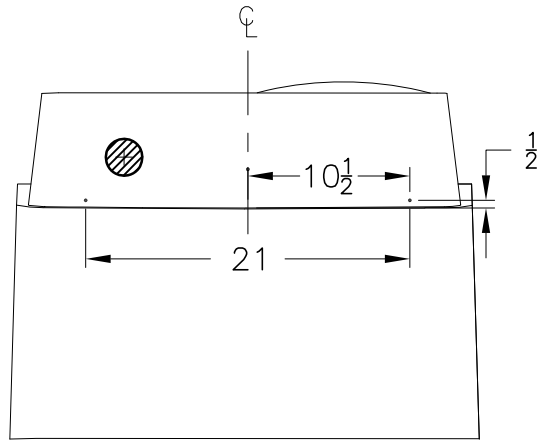
THIS DOCUMENT IS THE PROPERTY OF BOSTON WHALER, INC. MFG. DEPT., EDGEWATER, FLORIDA. ALL RIGHTS ARE RESERVED. THIS DOCUMENT AND INFORMATION CONTAINED MUST NOT BE COPIED OR DISCLOSED TO OTHERS WITHOUT WRITTEN PERMISSION OF BOSTON WHALER, INC.

DWG. NO:  
09201

REV.  
0

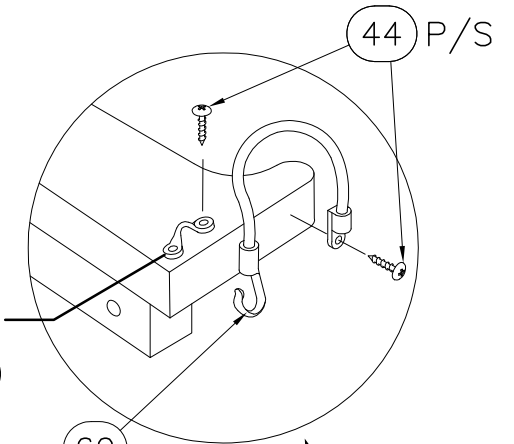
CURRENT ECD  
09035790

NOTES:



ROD HOLDER  
FASTENING  
LOCATION

FWD. FACE



(PAD EYE  
INCLUDED w/82)

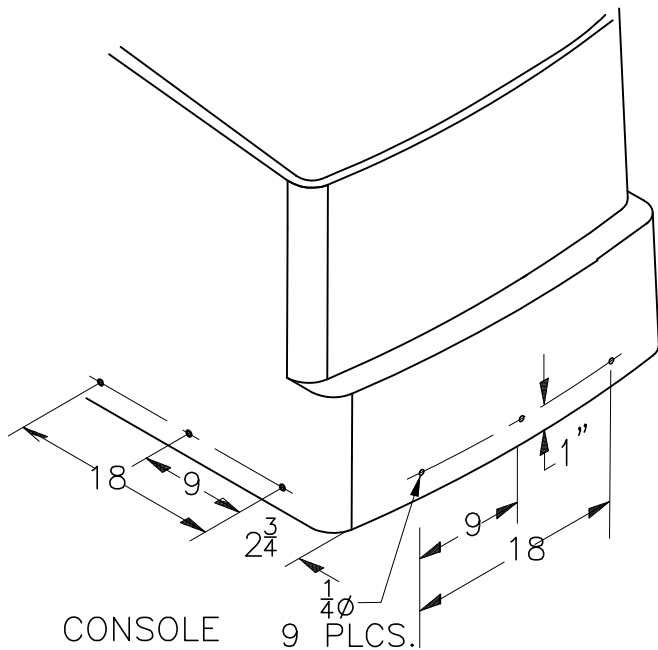
60 P/S

61

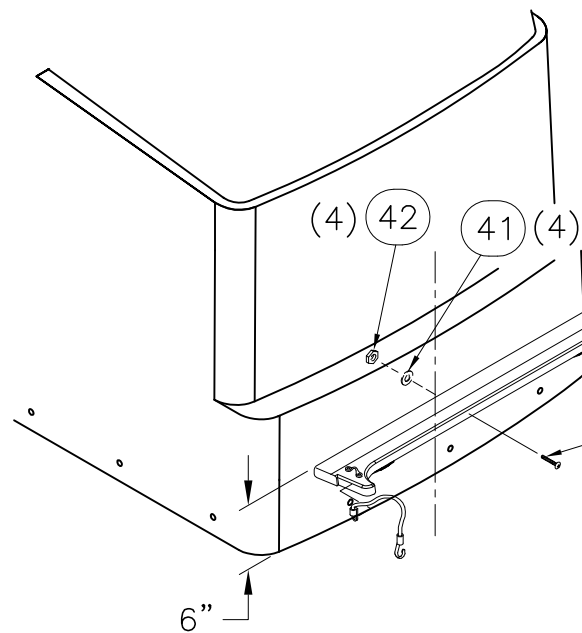
56 (4)

FISH PKG.  
OPT: 100-70203  
COOLER SEAT  
OPT: 100-70307

(E) DELETE W/SUN LOUNGE  
OPT: 100-70350



CONSOLE  
FASTENING  
LOCATIONS  
©



INTERPRET DIMENSIONS AND TOLERANCES PER ANSI Y 14.5 UNLESS OTHERWISE SPECIFIED DIMENSIONS ARE IN INCHES.  
TOLERANCES: ANGLES = ± .5° .XXX = ± .010  
.X = ± .1 .XX = ± .03  
DO NOT SCALE DRAWING

DRAWN: R.DURHAM DATE: 01/23/07 SCALE: NONE

DWG. TITLE:  
CONSOLE ASSEMBLY

BOAT MODEL  
170MT

MOLD NO.

INIT. REL. ECN NO: 06093674  
DWG. NO: 09201

SHT. NO.  
3 OF 4

THIS DOCUMENT IS THE PROPERTY OF BOSTON WHALER, INC. MFG. DEPT., EDgewater, FLORIDA. ALL RIGHTS ARE RESERVED. THIS DOCUMENT AND INFORMATION CONTAINED MUST NOT BE COPIED OR DISCLOSED TO OTHERS WITHOUT WRITTEN PERMISSION OF BOSTON WHALER, INC.

DWG. NO:  
09201

REV.  
0

CURRENT ECD  
09035790

BILL OF MATERIAL

ITEM	QTY.	U/M	DESCRIPTION	B.W.I. NO.
01	1	EA	FIBERGLASS PART, CONSOLE	22-K347-00
02	1	EA	DOOR, HDPE BW160DA/17MTK-06 CNSL	1803646
Ⓜ 03	2	EA	SCREW, TAPPING #10A X 1" POH SC	1008507
04	1	EA	RAIL, GRAB BW170MT-02 CNSL SS	1689427
05	1	EA	W/S, BW170MT-02 CNSL CLEAR	1689418
06	1	EA	BOX, PLAS BW-04 TACKLE 2-DRWR WHT	1761591
07	1	EA	COMPASS,FLSHMT 3 7/8" BLK WT HSE/GREEN LT	1791615
08	1	EA	SWITCH, BATTERY ON/OFF W/O LOCK W/O DISC	0162701
Ⓜ 09	1	EA	PANEL, BW170MT-07 MERC ANALOG W/SW 60 ELPT	1848340
10	0	FT	HOSE, PVC CLEAR DRAIN 7/16"	1041490
11	1	EA	CUSH, BW17MTK-05 CNSL ROD HLDR	1781379
12	1	EA	PANEL, HDPE BW170MT-02 CLSOUT CNSL BASE	1690180
13	1	EA	CONTROL, CNSL MNT SGL N/HARNESS GEN II	1752911
14	1	EA	STEERING WHEEL, 15" DIA SS 25DEG	1020197
15	1	EA	ACC PART, MERC SW (SAFETY ASSY)	0882605
Ⓜ 16	1	EA	HORN, SGL CONCEALED W/SS GRILL/CONN	1837054
Ⓜ 17	1	EA	HORN, GRILL SGL SS OVERLAY SERIES 84400-1	1781252
18	1	EA	ROD HOLDER, BW170MT-02 4-ROD ASSY	1690318
19	0	EA	X	X
20	1	EA	LABEL, BW DC MAIN BREAKER	1075282
21	1	EA	STEERING, HELM NFB SGL	0626143
22	1	EA	STEERING BEZEL 90 DEG SGL	626150
23	1	EA	EMBLEM, BW STEERING WHEEL CAP	1021054
24	1	EA	LABEL, BILGE (LEXAN)	1745123
25	1	EA	PANEL, HDPE BW170MT-08 CLSOUT CNSL LRG	1890729
26	0	EA	X	X
27	2	EA	DRINKHOLDR, PLAS W/DRAIN DEEP XLG SZ BLK	1727419
28	0	FT	HOSE, PVC CLEAR 3/8"	0124347
29	1	EA	BOX, ABS FIRE EXT SHORT WHT	1037555
30	1	EA	BOX, ABS HARNESS	1037530
Ⓜ 31	0	EA	X	X
Ⓜ 32	0	EA	X	X
33	3	EA	BOOT, RESET BRKR CLEAR	1066547
34	13	FT	TRIM, EDGE WHITE FLEX 'L'-TRIM	1020924
35	7	EA	NUT, WELL	1033422
36	7	EA	SCREW, MACHINE #10-32 x 1-1/4" PFH SC	1010107
37	7	EA	WASHER, FINISH #10 SS	0896258
38	4	EA	SCREW, MACHINE #10-24 X 1.75" PTH SC	1341973
39	4	EA	SNAP STUD, W/#8 X 3/8" PH BR/NI/SS	0203786
40	3	EA	SCREW, CAP #5/16-18 X 1.25" HEX HD SC	1742748

BILL OF MATERIAL

ITEM	QTY.	U/M	DESCRIPTION	B.W.I. NO.
Ⓜ 41	30	EA	WASHER, FLAT #10 SC	1260751
Ⓜ 42	34	EA	NUT, HEX NYLON LOCK #10-24 SC	1007772
43	6	EA	SCREW, TAPPING #6 x 3/4" POH SC	1008564
44	18	EA	SCREW, TAPPING #8 x 5/8" PTH SC	1010925
45	0	EA	X	X
46	12	EA	SCREW, MACHINE #10-24 x 1.25" POH SC	1008424
47	1	EA	COVER, ABS BW MINIBUSS BLK	1185016
48	1	EA	BUSS BAR, MINIBUSS BAR DC	1324334
49	6	EA	SCREW, TAPPING #8 x 1/2" PTH SC	1008812
50	4	EA	SCREW, TAPPING #8 x 3/4" PFH SC	1008408
Ⓜ 51	1	EA	LIGHT, NAV A/R STERN 54" N/BEND	1691343
52	1	EA	LIGHT, NAV STERN BASE RND CHR.	331751
53	1	EA	CAP, DRAINBOOT STERN LIGHT MAST BLK	1042761
54	3	EA	WASHER, LOCK/SPLIT 5/16" SC	1260611
Ⓜ 55	4	EA	SCREW, MACHINE #10-24 X 1.25" PPH SC	1008630
56	4	EA	SCREW, MACHINE #10-24 X 1.75" PTH SC	1341973
Ⓜ 57	1	EA	BRKR, SURF MNT THERMAL 40AMP SWITCHABLE	1475433
Ⓜ 58	2	EA	BOOT, PVC TERM INSUL CAP RED	1689904
Ⓜ 59	2	EA	SCREW, TAPPING #10A X 3/4" PTH SC	1008762
60	2	EA	STRAP, COOLER TAMER 7" CNSL MNT	1741035
61	1	EA	HOLDER, HDPE BW17MTK-04 COOLER	1756620
62	6	EA	SCREW, MACHINE #10-24 X 3/4" PTH SC	1008705
Ⓜ 63	1	EA	PANEL, BLANK:BW170MT-09 W/SW	1944479
64	2	EA	SPEAKER, COAXIAL 6.5" W/WHT CVR	1690555
65	1	EA	PANEL, HDPE BW160DA/17MTK-06 CLOSEOUT STEREO	1803648
66	2	EA	COVER, ABS BW-97 SPKR 7 1/8" RAD	1047836
Ⓜ 67	8	EA	SCREW, MACHINE #8-32 X 1" PTH SC	1008713
Ⓜ 68	8	EA	WASHER, FLAT #8 SC	1326297
Ⓜ 69	8	EA	NUT, HEX NYLON LOCK #8-32 SC	1260728
Ⓜ 70	1	EA	BRKR, MANUAL RESET 5A	670497
71	4	EA	SCREW, MACHINE #10-24 X 4" POH SC	1812435
Ⓜ 72	1	EA	STEREO, CLARION AM/FM CD/SIR/XM SAT CMD6	1970760
Ⓜ 73	1	EA	STEREO, REMOTE CNTRL W/DIG DSPLY F/CMD6 BLK	1970759
74	1	EA	LABEL, BW STEREO	1075266
75	1	EA	SWITCH, IGN ASSY 4-POSITION W/HOUSING	1801954
Ⓜ 76	1	EA	VIDEO EQUIPMENT, AUX INPUT MP3 W/FEMALE ENDS	1975651
Ⓜ 77	1	EA	PANEL, BW170MT-09 MERC ANA W/SW	1963296
Ⓜ 78	1	EA	STEERING, HELM BAYSTAR (RV10/07)	1935734
Ⓜ 79	1	EA	BRKR/SWITCH, PUSH BUTTON 25A ETA	182477
Ⓜ 80	1	EA	CABLE, CLARION USB INPUT 3'	1973247
Ⓜ 81	1	EA	CABLE, JUMPER STEREO ILLUMINATION	1974014



INTERPRET DIMENSIONS AND TOLERANCES PER ANSI Y 14.5 UNLESS OTHERWISE SPECIFIED DIMENSIONS ARE IN INCHES.  
 TOLERANCES: ANGLES = ± .5' .XXX = ± .010  
 .X = ± .1 X = ± 1/16  
 .XX = ± .03 X = ± 1/16  
 DO NOT SCALE DRAWING

DRAWN: R.DURHAM

DATE: 01/23/07

SCALE: NONE

BOAT MODEL

MOLD NO.

DWG. TITLE:

CONSOLE ASSEMBLY

170MT

INIT. REL. ECN NO:

DWG. NO:

06093674

09201

SHT. NO.

4 OF 4