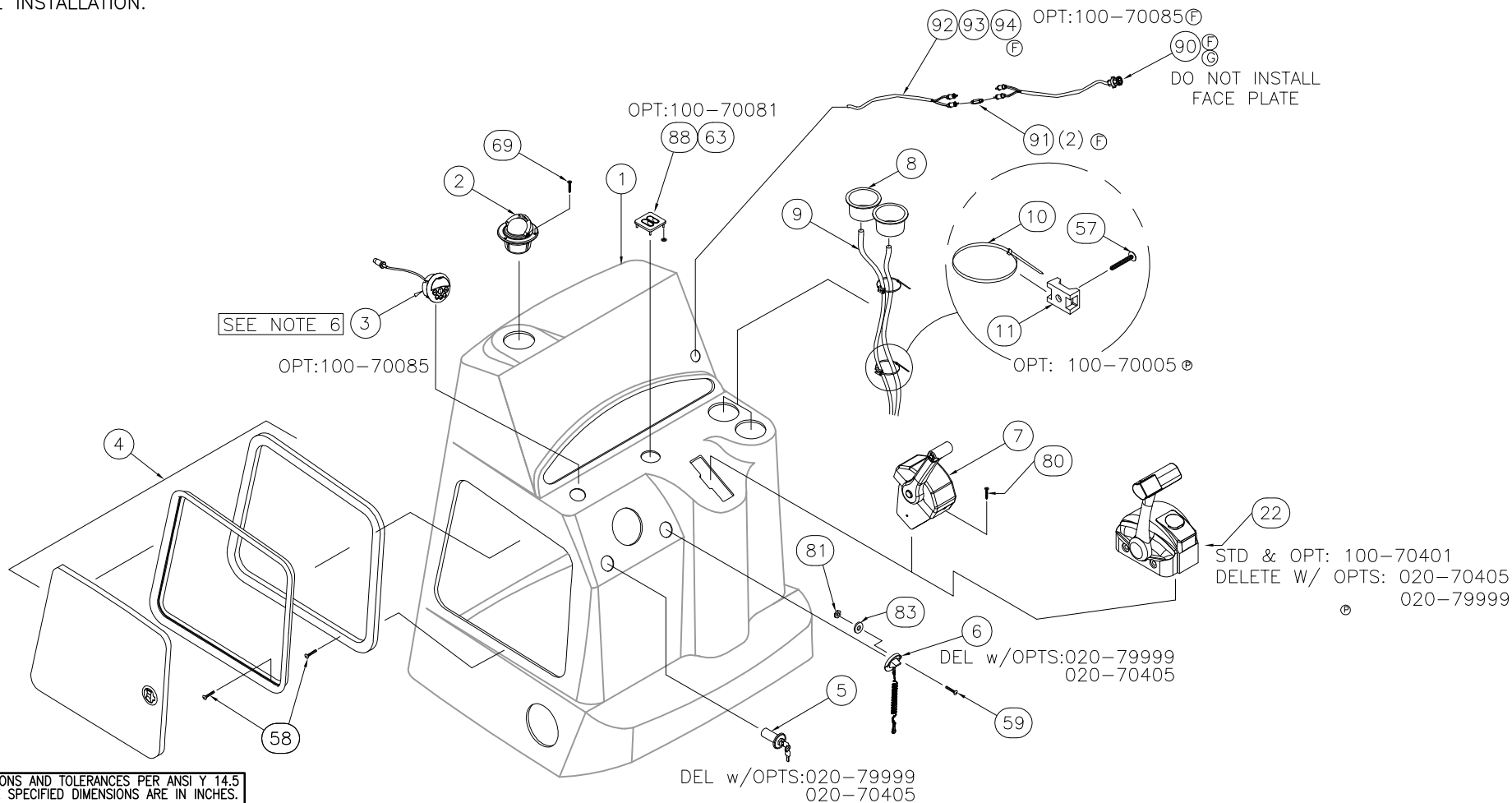


THIS DOCUMENT IS THE PROPERTY OF BOSTON WHALER, INC. MFG. DEPT., EDGEWATER, FLORIDA. ALL RIGHTS ARE RESERVED. THIS DOCUMENT AND INFORMATION CONTAINED MUST NOT BE COPIED OR DISCLOSED TO OTHERS WITHOUT WRITTEN PERMISSION OF BOSTON WHALER, INC.

DWG. NO: 09201	REV. P	CURRENT ECD 07054320
-------------------	-----------	-------------------------

REVISIONS					
REV.	DESCR.	BY	DATE	APPVD.	ECN NO.
N	MYE '08: CHANGED PN# & ITEM 12, WAS 1854318	SDT	04/13/07	RA	07044142
O	DELETED OPTIONS 020-70303 AND 020-70304	RJW	05/14/07	RA	07054321
P	DELETED OPTION 020-70100, MADE OPTION 020-70277 STANDARD	RJW	05/14/07	RA	07054320

1. USE CONSOLE FIXTURE FOR ALL CUTOUTS.
2. REFER TO DWG. 16-109 FOR CONSOLE CUTOUTS.
3. REFER TO HOSE CUT LIST DWG. 01-251
4. SEAL ALL COMPONENTS & FASTER (EXCEPT WINDSHIELD) USING WHITE SILICONE, WHEN INSTALLED.
5. WIRING/ HOSE SUPPORTS SHALL NOT EXCEED 14" CTRS.
6. ATTACH 18" OF 14GA BLK WIRE TO STEREO REMOTE BEFORE INSTALLATION.



INTERPRET DIMENSIONS AND TOLERANCES PER ANSI Y 14.5 UNLESS OTHERWISE SPECIFIED DIMENSIONS ARE IN INCHES.  
 TOLERANCES: ANGLES = ± .5° .XXX = ± .010  
 .X = ± .1 .XX = ± .03 X = ± 1/16  
 DO NOT SCALE DRAWING

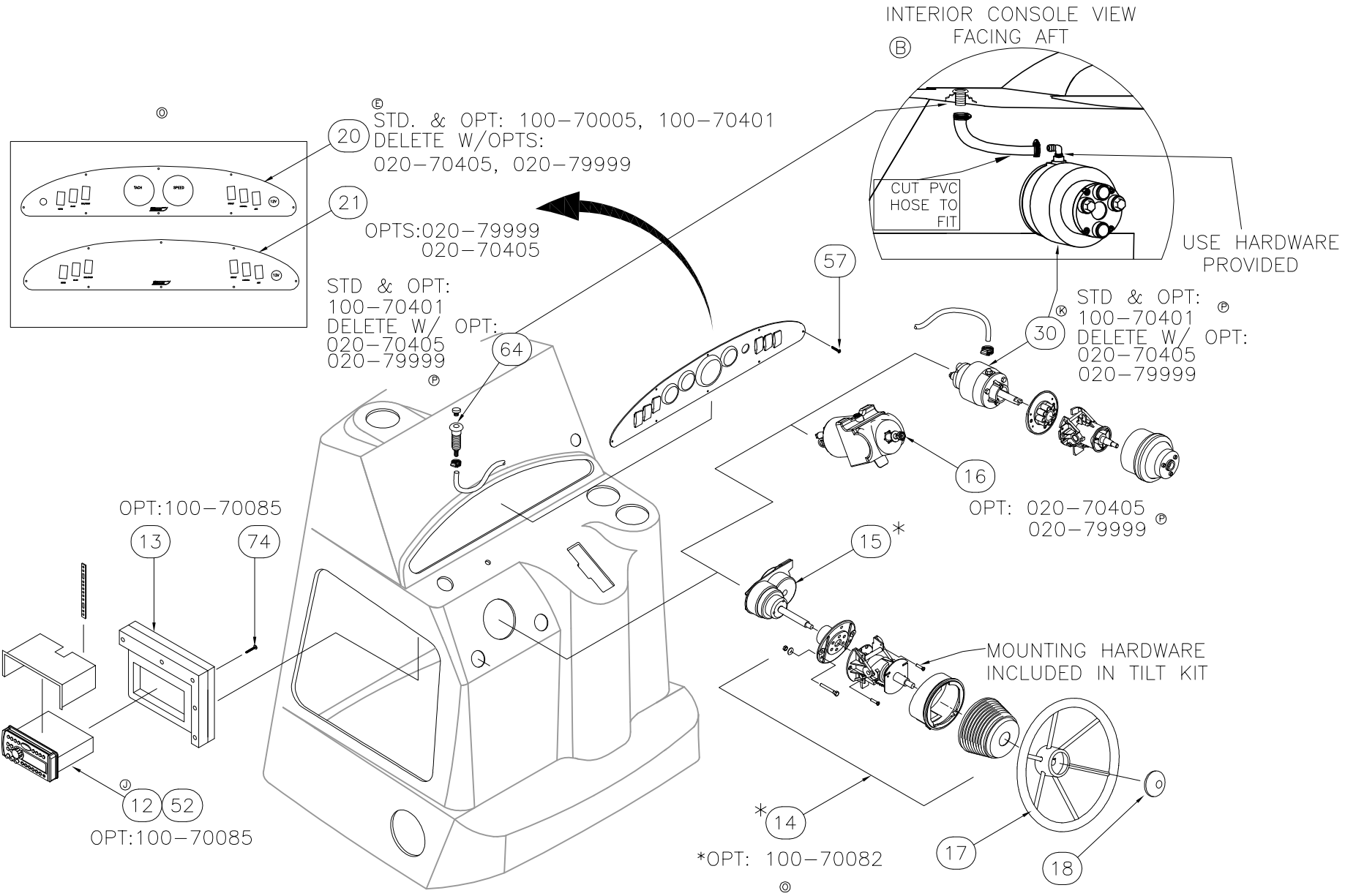
 <p><b>BOSTON WHALER</b> PRODUCT DEV. &amp; MFG. ENGINEERING GROUP</p>	CHECKED: AD	DATE: 06/14/05	DRAWN: M.ZAFFUTO	DATE: 06/06/05	SCALE: NONE	BOAT MODEL	MOLD NO.
	APPD: KR	DATE: 06/15/05	DWG. TITLE:		1900R		
	DESIGN: VPK	DATE: 06/15/05	Console Assembly		INIT. REL. ECN NO:	DWG. NO:	SHT. NO.
	INT. ENG: MG	DATE: 06/15/05			0505102	09201	1 of 9

THIS DOCUMENT IS THE PROPERTY OF BOSTON WHALER, INC. MFG. DEPT., EDGEWATER, FLORIDA. ALL RIGHTS ARE RESERVED. THIS DOCUMENT AND INFORMATION CONTAINED MUST NOT BE COPIED OR DISCLOSED TO OTHERS WITHOUT WRITTEN PERMISSION OF BOSTON WHALER, INC.

DWG. NO:  
09201

REV.  
P

CURRENT ECD  
07054320



INTERPRET DIMENSIONS AND TOLERANCES PER ANSI Y 14.5 UNLESS OTHERWISE SPECIFIED DIMENSIONS ARE IN INCHES.  
 TOLERANCES: ANGLES = ± .5° .XXX = ± .010  
 .X = ± .1 .XX = ± .03 X/X = ± 1/16  
 DO NOT SCALE DRAWING

DRAWN: M.ZAFFUTO DATE: 06/06/05 SCALE: NONE  
 DWG. TITLE: Console Assembly

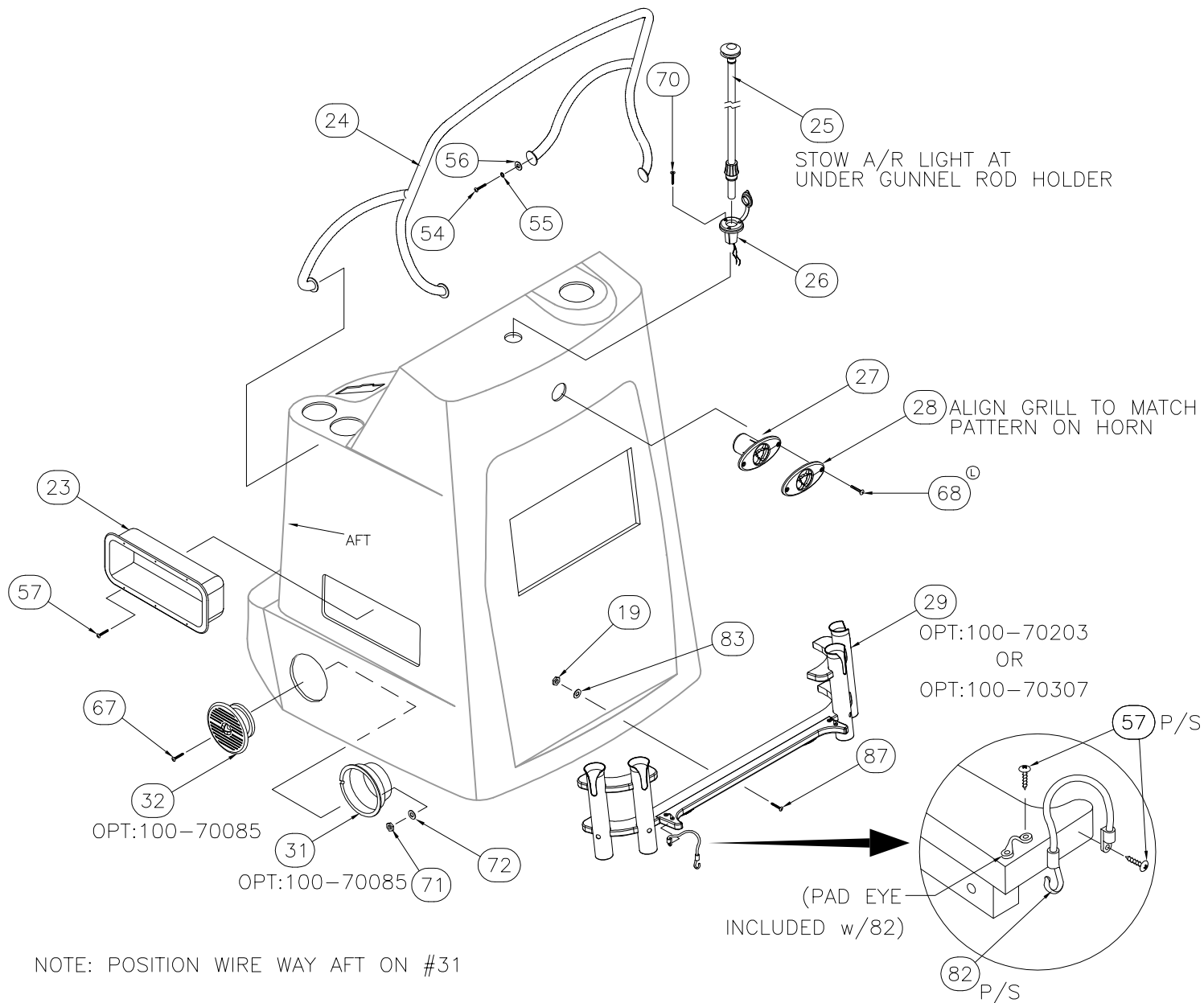
BOAT MODEL 1900R		MOLD NO.	
INIT. REL. ECN NO: 0505102	DWG. NO: 09201	SHT. NO. 2 of 9	

THIS DOCUMENT IS THE PROPERTY OF BOSTON WHALER, INC. MFG. DEPT., EDGEWATER, FLORIDA. ALL RIGHTS ARE RESERVED. THIS DOCUMENT AND INFORMATION CONTAINED MUST NOT BE COPIED OR DISCLOSED TO OTHERS WITHOUT WRITTEN PERMISSION OF BOSTON WHALER, INC.

DWG. NO:  
09201

REV.  
P

CURRENT ECD  
07054320

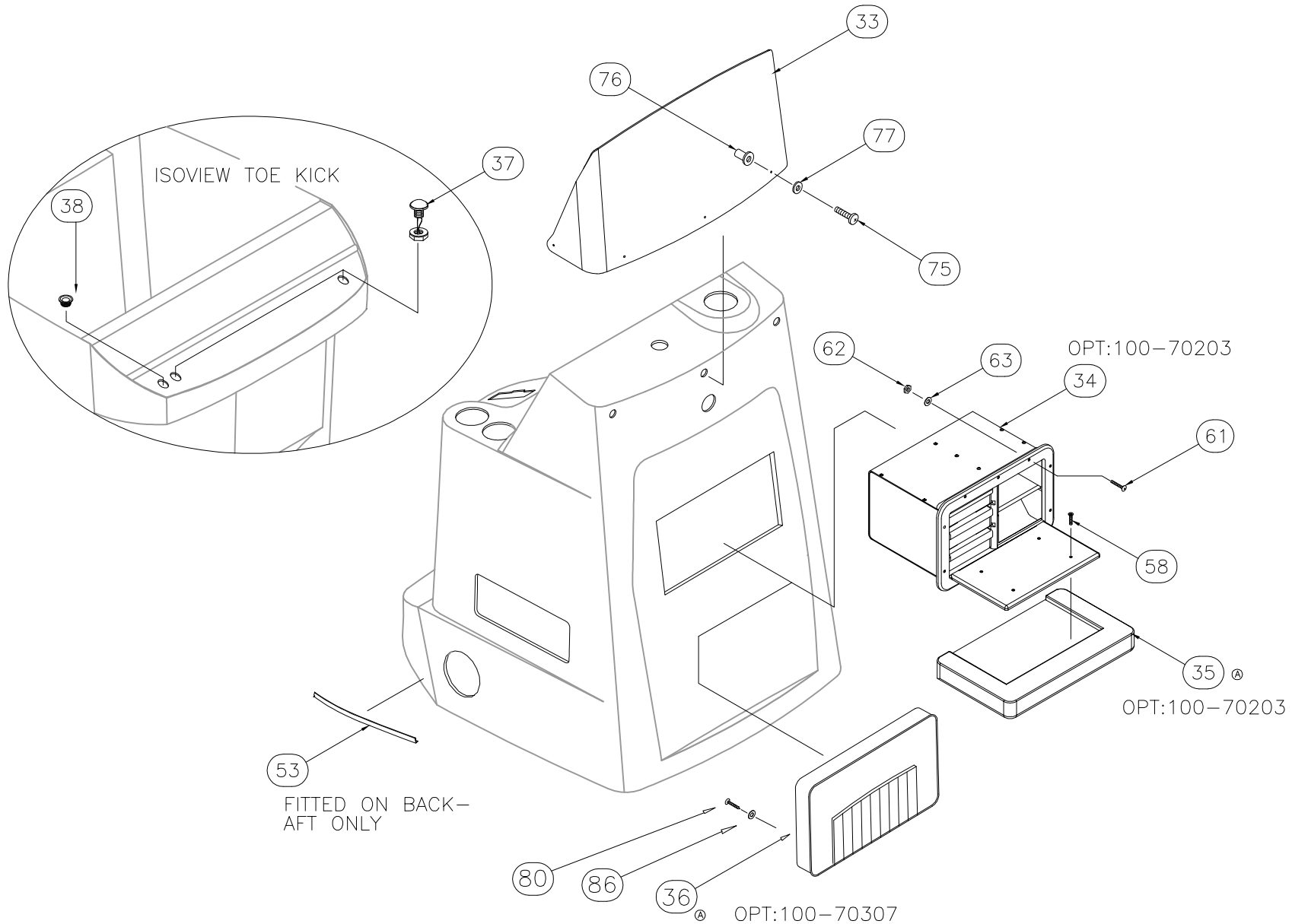


THIS DOCUMENT IS THE PROPERTY OF BOSTON WHALER, INC. MFG. DEPT., EDGEWATER, FLORIDA. ALL RIGHTS ARE RESERVED. THIS DOCUMENT AND INFORMATION CONTAINED MUST NOT BE COPIED OR DISCLOSED TO OTHERS WITHOUT WRITTEN PERMISSION OF BOSTON WHALER, INC.

DWG. NO:  
09201

REV.  
P

CURRENT ECD  
07054320



INTERPRET DIMENSIONS AND TOLERANCES PER ANSI Y 14.5 UNLESS OTHERWISE SPECIFIED DIMENSIONS ARE IN INCHES.  
 TOLERANCES: ANGLES = ± .5° .XXX = ± .010  
 .X = ± .1 .XX = ± .03 X = ± 1/16  
 DO NOT SCALE DRAWING

DRAWN: M.ZAFFUTO

DATE:06/06/05

SCALE: NONE

BOAT MODEL

MOLD NO.

1900R

DWG. TITLE:

Console Assembly

INIT. REL. ECN NO:

DWG. NO:

0505102

09201

SHT. NO.

4 of 9

©STD. & 100-70005, 100-70401

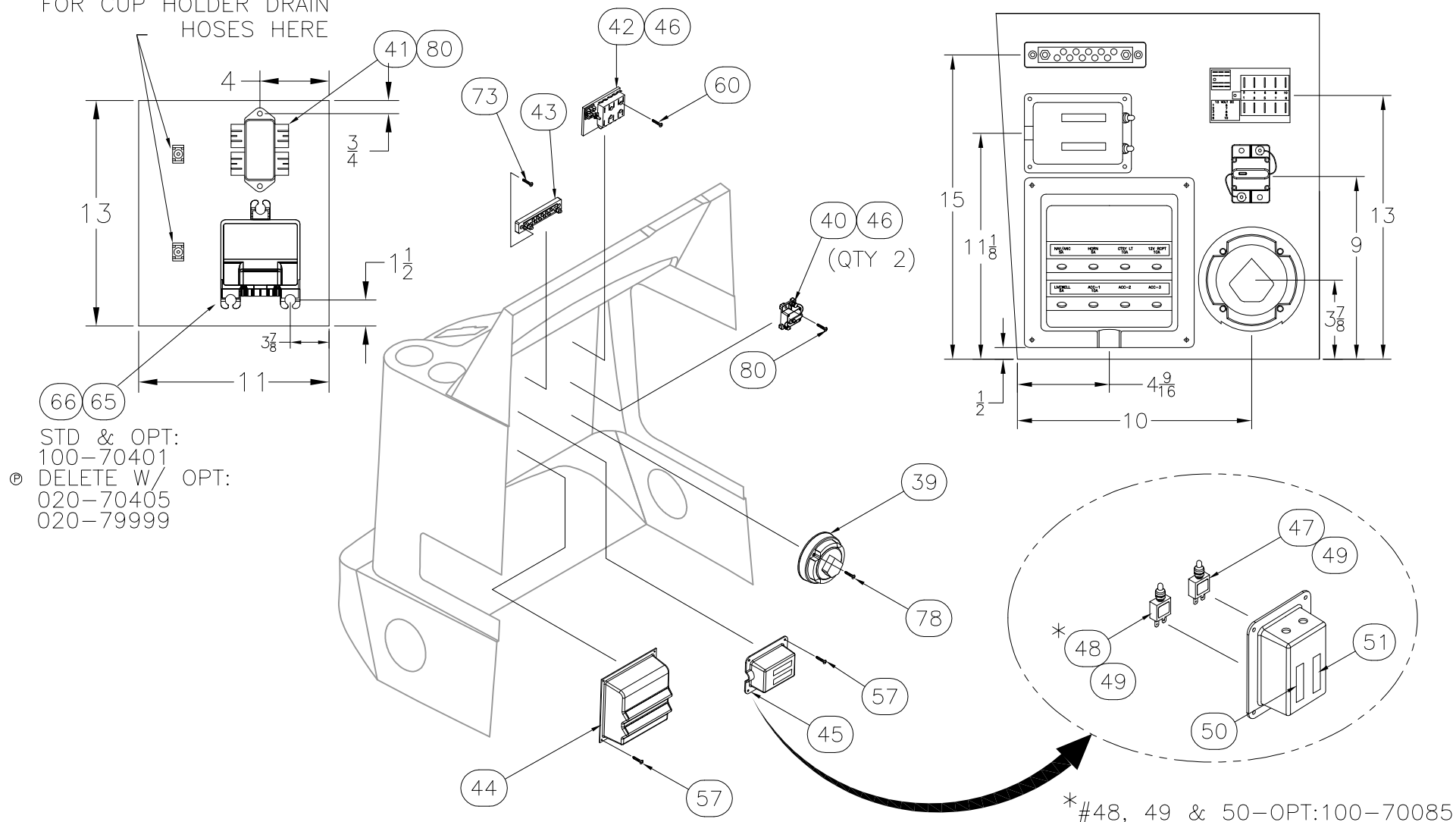
DELETE W/OPTS:

020-70405

020-79999

©

MOUNT TIE BLOCKS FOR CUP HOLDER DRAIN HOSES HERE



STD & OPT:  
100-70401  
© DELETE W/ OPT:  
020-70405  
020-79999

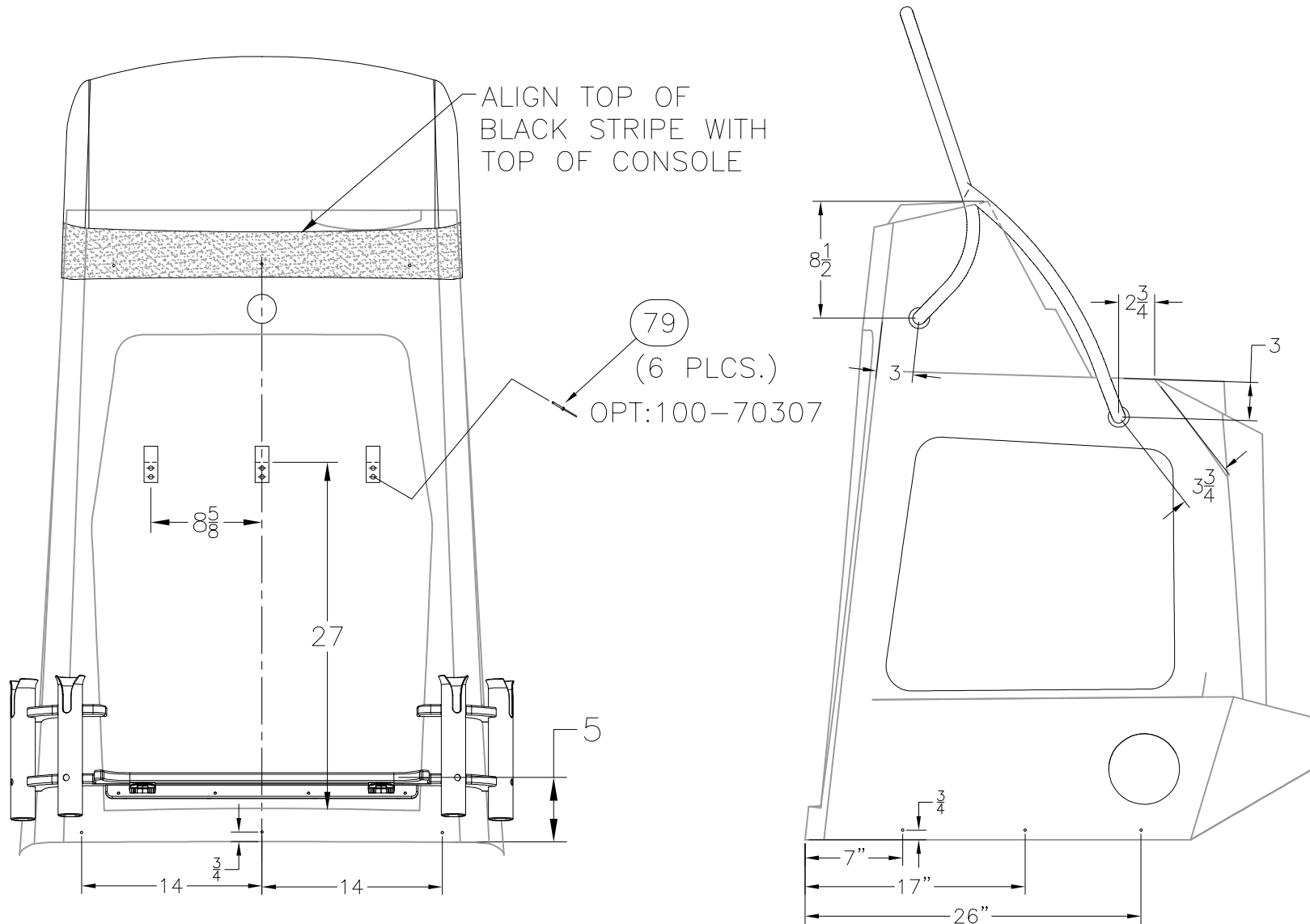
\*#48, 49 & 50-OPT:100-70085

THIS DOCUMENT IS THE PROPERTY OF BOSTON WHALER, INC. MFG. DEPT., EDGEWATER, FLORIDA. ALL RIGHTS ARE RESERVED. THIS DOCUMENT AND INFORMATION CONTAINED MUST NOT BE COPIED OR DISCLOSED TO OTHERS WITHOUT WRITTEN PERMISSION OF BOSTON WHALER, INC.

DWG. NO:  
09201

REV.  
P

CURRENT ECD  
07054320



DRILL 1/4" PILOT (X9)



INTERPRET DIMENSIONS AND TOLERANCES PER ANSI Y 14.5 UNLESS OTHERWISE SPECIFIED DIMENSIONS ARE IN INCHES.  
TOLERANCES: ANGLES = ± .5° .XXX = ± .010  
.X = ± .1 .X = ± 1/16  
.XX = ± .03 X = ± 1/16  
DO NOT SCALE DRAWING

DRAWN: M.ZAFFUTO

DATE:06/06/05

SCALE: NONE

BOAT MODEL

MOLD NO.

1900R

DWG. TITLE:

Console Assembly

INIT. REL. ECD NO:

DWG. NO:

0505102

09201

SHT. NO.

6 of 9

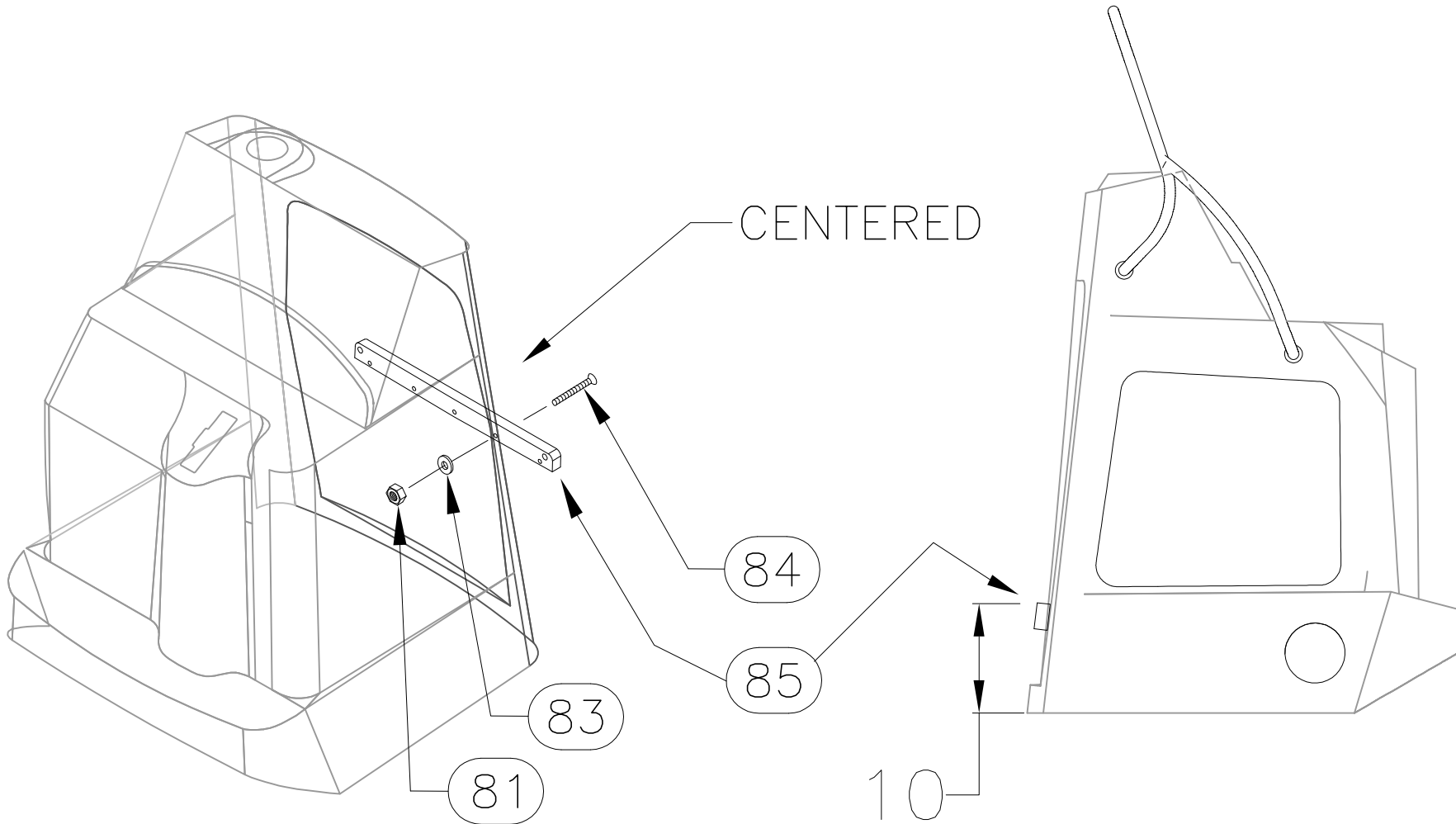
THIS DOCUMENT IS THE PROPERTY OF BOSTON WHALER, INC. MFG. DEPT., EDGEWATER, FLORIDA. ALL RIGHTS ARE RESERVED. THIS DOCUMENT AND INFORMATION CONTAINED MUST NOT BE COPIED OR DISCLOSED TO OTHERS WITHOUT WRITTEN PERMISSION OF BOSTON WHALER, INC.

DWG. NO:  
09201

REV.  
P

CURRENT ECD  
07054320

OPT:100-70350



INTERPRET DIMENSIONS AND TOLERANCES PER ANSI Y 14.5 UNLESS OTHERWISE SPECIFIED DIMENSIONS ARE IN INCHES.  
 TOLERANCES: ANGLES = ± .5° .XXX = ± .010  
 .X = ± .1 X = ± 1/16  
 .XX = ± .03  
 DO NOT SCALE DRAWING

DRAWN: M.ZAFFUTO DATE:06/06/05 SCALE: NONE  
 DWG. TITLE:  
 Console Assembly

BOAT MODEL  
1900R  
 INIT. REL. ECN NO:  
0505102

MOLD NO.  
 DWG. NO:  
09201

SHT. NO.  
7 of 9

THIS DOCUMENT IS THE PROPERTY OF BOSTON WHALER, INC. MFG. DEPT., EDGEWATER, FLORIDA. ALL RIGHTS ARE RESERVED. THIS DOCUMENT AND INFORMATION CONTAINED MUST NOT BE COPIED OR DISCLOSED TO OTHERS WITHOUT WRITTEN PERMISSION OF BOSTON WHALER, INC.

DWG. NO:  
09201

REV.  
P

CURRENT ECD  
07054320

Parts List				
ITEM	QTY	U/M	DESCRIPTION	B.W.I. NO.
1	1	EA.	FIBERGLASS PART, CONSOLE	22-K164-00
2	1	EA.	COMPASS,FLSHMT 3 7/8" BLK WT HSE/GREEN LT	1791615
3	1	EA.	STEREO, REMOTE CNTRL W/DIG DSPLY FOR CMD4 BLK	1803894
4	1	EA.	DOOR, HDPE BW190NT/2100R-05 CNSL SEAFM	1771579
5	1	EA.	SWITCH, IGN ASSY 4-POSITION W/HOUSING	1801954
6	1	EA.	ACC PART, MERC SWITCH (SAFETY ASSY)	0882605
7	1	EA.	CONTROL, CNSL MNT SGL N/HARNESS 4000 GEN II	1752911
8	2	EA.	DRINKHOLDR, PLAS W/DRAIN DEEP XLG SZ BLK	1727419
9	0	FT.	HOSE, PVC CLEAR 3/8"	0124347
10	3	EA.	TIE, CABLE 6" LG NYLON BLK	0999672
11	3	EA.	TIE, CLIP BLK	1031764
(N) 12	1	EA.	STEREO, AM/FM CD/CHNGR/SIR/XM SAT CMD5	1894055
13	1	EA.	PANEL, HDPE BW190NT/2100R-06 CLOSEOUT STEREO	1803892
14	1	EA.	STEERING, PERFORMANCE TILT MECHANISM	0662510
15	1	EA.	STEERING, HELM PERFORMANCE NFB TILT	0997213
16	1	EA.	STEERING, HELM PUMP SEA STAR I TILT	0317032
17	1	EA.	STEERING WHEEL, 15" DIA SS 25DEG	1020197
18	1	EA.	EMBLEM, BW STEERING WHL CAP	1021054
19	4	EA.	NUT, HEX NYLON LOCK #10-24 SC	1007772
20	1	EA.	PANEL, BW190NT-05 INST MERC SC-1000 W/SW	1772719
21	1	EA.	PANEL, BLANK:BW190NT-05 INST W/SW	1772726
22	1	EA.	CONTROL, CNSL MNT SLIM DTS N/HARNESS '06	1802837
23	1	EA.	BOX, ABS BW-97 FIRE EXT SHORT WHT	1037555
24	1	EA.	RAIL, GRAB BW190NT-03 CNSL SS	1747424
25	1	EA.	LIGHT, NAV A/R STERN 52"N/BEND	0574400
26	1	EA.	LIGHT, NAV STERN BASE RND CHR	0331751
27	1	EA.	HORN, SGL BLK NO CONN SERIES 84400-1	1780938
28	1	EA.	HORN, GRILL SGL SS OVERLAY SERIES 84400-1	1781252
29	1	EA.	HOLDER, HDPE BW190NT-03 ROD CNSL W/CLEAT	1747420
(K) 30	1	EA.	STEERING, HELM PUMP MERC 25 CM3 TILT	1882335
31	2	EA.	COVER, ABS BW-97 SPKR 7 1/8"RAD WHT	1047836
32	2	EA.	SPEAKER, COAXIAL 6.5" W/WHT CVR & WHT TWEETER	1690555
33	1	EA.	W/S, BW190NT-03 CNSL CLEAR PLEX	1748933
34	1	EA.	BOX, HDPE BW190NT-03 TACKLE 3-DRWR	1747419
(A) 35	1	EA.	CUSH, BW190NT-05 B/R CNSL W/FISHING PKG	1781388
(A) 36	1	EA.	CUSH, BW190NT-05 B/R CNSL W/COOLER	1781387
37	2	EA.	LIGHT, COURTESY WATERPROOF FRONT MNT W/NUT	1078625
38	1	EA.	DRAIN, 1" IMPACT W/O BARB BLK	1041953
39	1	EA.	SWITCH, BATTERY ON/OFF W/O LOCK W/O DISC	0162701
40	1	EA.	BRKR, SURF MNT THERMAL 50AMP SWITCHABLE	1475441
41	1	EA.	ACC PART, MERC S-CRFT JUNC BOX 4-WAY	1507326
42	1	EA.	FUSE BLOCK, 10-GNG BLADE-TYPE W/BLANK LABELS	1688102
43	1	EA.	BUSS BAR, DC GROUND 10-POSITION	1013614
44	1	EA.	BOX, V/F BRKR BW190NT-03 WIRED W/PLUG	1745167

 <b>BOSTON WHALER</b> PRODUCT DEV. & MFG. ENGINEERING GROUP	DRAWN: M.ZAFFUTO DWG. TITLE: Console Assembly	DATE: 06/06/05 SCALE: NONE	BOAT MODEL: 1900R INIT. REL. EGN NO: 0505102	MOLD NO. DWG. NO: 09201	SHT. NO. 8 of 9
	INTERPRET DIMENSIONS AND TOLERANCES PER ANSI Y 14.5 UNLESS OTHERWISE SPECIFIED DIMENSIONS ARE IN INCHES. TOLERANCES: ANGLES = ± .5° .XX = ± .010 .X = ± .1 X = ± 1/16 .XX = ± .03 X = ± 1/16 DO NOT SCALE DRAWING				



THIS DOCUMENT IS THE PROPERTY OF BOSTON WHALER, INC. MFG. DEPT. EDGEWATER, FLORIDA. ALL RIGHTS ARE RESERVED. THIS DOCUMENT AND INFORMATION CONTAINED MUST NOT BE COPIED OR DISCLOSED TO OTHERS WITHOUT WRITTEN PERMISSION OF BOSTON WHALER, INC.

DWG. NO. 09201  
 REV. P  
 CURRENT ECD 07054320

(O) (H) (D)  
 (M) (G) (F)  
 (F)  
 (F)  
 (F)

(L)  
 (L)

Parts List				
ITEM	QTY	U/M	DESCRIPTION	B.W.I. NO.
45	1	EA.	BOX, ABS BW-97 HARNESS	1037530
46	3	EA	BOOT, PVC TERMINAL INSULATOR CAP RED	1689904
47	1	EA.	BRKR, MANUAL RESET 5A	0670497
48	1	EA.	BRKR, MANUAL RESET 15A	1750593
49	2	EA.	BOOT, RESET BRKR CLR	1066547
50	1	EA.	LABEL, BW STEREO	1075266
51	1	EA.	LABEL, BILGE (LEXAN)	0756866
52	1	EA.	ANTENNA LEAD, STEREO SOFT WIRE 30"	0875484
53	5	FT.	MOLDING, VINYL "L" OFF-WHT W/ADH	1020924
54	4	EA.	SCREW, MACHINE #1/4-20 X 1" PPH SC	1008580
55	4	EA.	WASHER, LOCK/SPLIT 1/4" SC	1260595
56	4	EA.	WASHER, FENDER 1/4"X 1.25" SC	1260678
57	33	EA.	SCREW, TAPPING #8A X 5/8" PTH SC	1010925
58	23	EA.	SCREW, TAPPING #8A X 3/4" PFH SC	1008408
59	2	EA.	SCREW, MACHINE #10-24 X 2" POH SC	1010479
60	4	EA.	SCREW, TAPPING #8A X 1.25" PPH SC	1010644
61	9	EA.	SCREW, MACHINE #8-32 X 1.25" PTH SC	1008721
62	9	EA.	NUT, HEX NYLON LOCK #8-32 SC	1260728
63	13	EA.	WASHER, FLAT #8 SC	1326297
64	1	EA.	STEERING, KIT REMOTE FILL MERC	1805452
65	1	EA.	ACC PART, MERC SLIM CNSL CMM KIT GEN I	1849604
66	1	EA.	PVC BOARD, 1/2"X 11"X 13"FOAMED	1805451
67	8	EA.	SCREW, MACHINE #6-32 X 1" PFH SC	1010172
68	2	EA.	SCREW, TAPPING #8A X 1" PTH SC	1008804
69	3	EA.	SCREW, TAPPING #6A X 1" PFH SC	1010354
70	3	EA.	SCREW, TAPPING #6A X 1.25" POH SC	1008556
71	8	EA.	NUT, LOCK 6-32 SC	1009810
72	8	EA.	WASHER, FLAT #6 SC	1326222
73	2	EA.	SCREW, TAPPING #10A X 3/4" PTH SC	1008762
74	5	EA.	SCREW, TAPPING #10A X 2" POH SC	1261163
75	5	EA.	SCREW, MACHINE #10-32 X 1.25" PFH SC	1010107
76	5	EA.	NUT, WELL 10-32	1033422
77	5	EA.	WASHER, FINISH #10 SS	0896258
78	4	EA.	SCREW, TAPPING #10A X 1.5" PTH SC	1008747
79	6	EA.	RIVET, POP/BLIND #3/16 X 5/8" ALUM	0189415
80	10	EA.	SCREW, TAPPING #10A X 1" PTH SC	1008739
81	7	EA.	NUT, HEX NYLON LOCK #10-24 SC	1007772
82	2	EA.	STRAP, COOLER TAMER 7" CNSL MNT	1741035
83	11	EA.	WASHER, FLAT #10 SC	1260751
84	5	EA.	SCREW, MACHINE #10 X 24 X 1.5" POH SC	1305788
85	5	EA.	CLEAT, HDPE BW19NT-03 SUN LNG	1751616
86	2	EA.	WASHER, FENDER #10 X 1" SC	1260454
87	4	EA.	SCREW, MACHINE #10-24 X 1.75" PTH SC	1341973
88	1	EA.	TRIM TAB, ASSY 9X9 W/POTTED SW BW-05	1782251
89	1	EA.	PANEL, BW1900R-07 INST MERC ANALOG W/SW	1838311
90	1	EA.	VIDEO EQUIPMENT, AUXILIARY INPUT MA-AUX2	1850253
91	2	EA.	ADAPTER, STEREO FEMALE/FEMALE	0956078
92	1	EA.	CABLE, RCA AUDIO 6' W/EFX-2 CONN W/NOISE SUPP	1750880
93	1	EA.	HEAT SHRINK, TUBING RED 3/4"X 6"	1042274
94	1	EA.	HEAT SHRINK, TUBING BLK 3/4"X 6"	0999839

MOLD NO. \_\_\_\_\_

BOAT MODEL 1900R

INIT. REL. ECN NO. 0505102

DWG. NO. 09201

SHT. NO. 9 of 9

---

DRAWN: M.ZAFFUTO

DATE: 06/06/05

SCALE: NONE

DWG. TITLE: Console Assembly

---

INTERPRET DIMENSIONS AND TOLERANCES PER ANSI Y 14.5 UNLESS OTHERWISE SPECIFIED DIMENSIONS ARE IN INCHES.

TOLERANCES: ANGLES = ± .5° .XXX = ± .010  
 .X = ± .1 X = ± 1/16  
 .XX = ± .03 Y = ± .015

DO NOT SCALE DRAWING

---



**BOSTON WHALER**  
 PRODUCT DEV. & MFG. ENGINEERING GROUP