

THIS DOCUMENT IS THE PROPERTY OF BOSTON WHALER, INC. MFG. DEPT., EDGEWATER, FLORIDA. ALL RIGHTS ARE RESERVED. THIS DOCUMENT AND INFORMATION CONTAINED MUST NOT BE COPIED OR DISCLOSED TO OTHERS WITHOUT WRITTEN PERMISSION OF BOSTON WHALER, INC.

DWG. NO:
08401

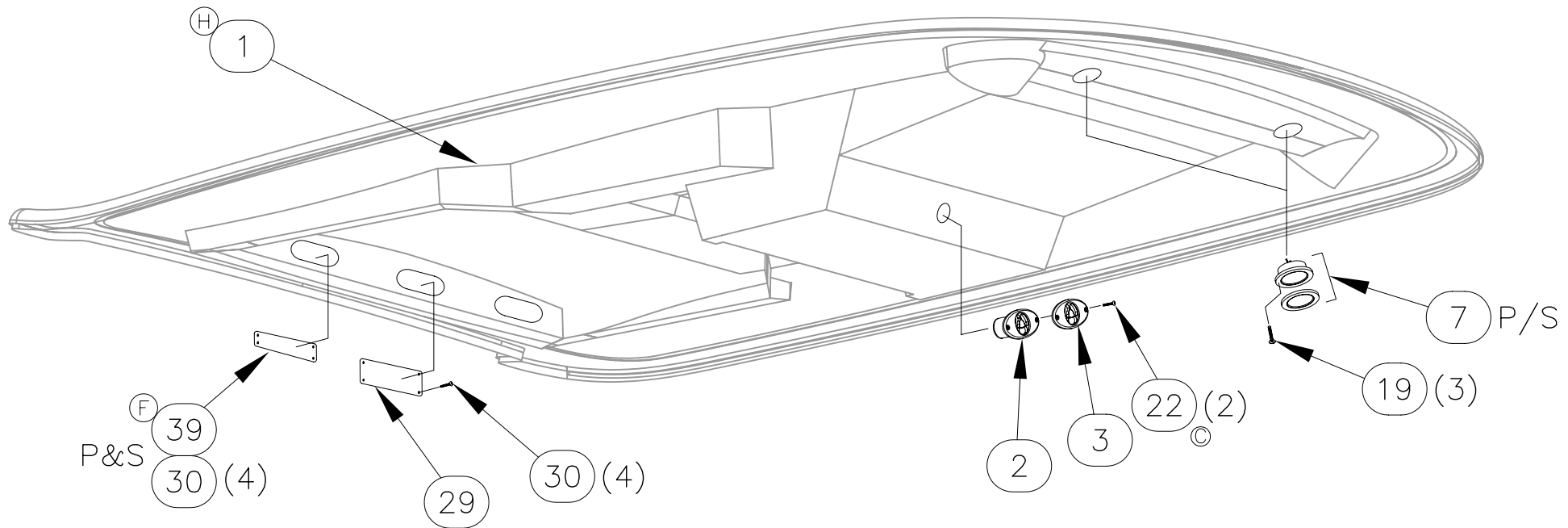
REV.
1

CURRENT ECD
060208

NOTES:

1. SEAL ALL SCREW HOLES w/URETHANE WHEN INSTALLING PARTS.
2. REF. DWG. 07-401 FOR WIRING DIAGRAM.
3. REF. DWG. 05-121 FOR LAMINATION DETAILS.
4. REF. DWG. 16-121 FOR CUTOUTS, TRIM & GRIND.
5. ROUTE WIRES TO AVOID, TWIST OR KINKING AND SECURE ALL WIRING EVERY 14" (MAX.).

REVISIONS					
REV.	DESCR.	BY	DATE	APPVD.	ECN NO.
A	SPREADER LIGHT WAS AT 4" PG 3	HJR	03/20/03	RA	040914
B	#35 WAS 1357730 AND 4OFT.	JM	04/05/03	VK	040914
C	UPDATED FRAME;ADDED STRG BAG TRACK,#36 & 37; #22 WS1213065;LIGHT WAS 4" SHT 2;LIGHT WAS AT 1 -7/8"	MRZ	04/25/05	RA	040914
D	#25 WAS 1091784, #19 WAS QTY 12, UPDATED FRAME, #26&27 WAS QTY 24, #35 WAS 1783352	HJR	05/03/05	MG	040914
E	MYE 2006: ITEM #12 P/N WAS 1683926	MRZ	06/15/05	-	05-06-63
F	ADDED ITEM #'S 38 & 39, SHEETS 1,4 & 6; #29 QTY 1 WAS 3, SHEETS 1 & 6.	SL	06/16/05	ME	05-06-23
G	ADDED ITEM #'S 40, 41 & 42, SHEETS 4 & 6.	SL	06/27/05	ME	05-06-45
H	HARDTOP ITEM #1 P/N 1806430 WAS 22-K213-00, SHEETS 1 & 6.	SL	07/05/05	ME	05-06-77
I	ADDED NOTE IN PAGE 2 FOR E-BOX FRAME PROCESS	AVM	2/20/06	ME	060208



INTERPRET DIMENSIONS AND TOLERANCES PER ANSI Y 14.5 UNLESS OTHERWISE SPECIFIED DIMENSIONS ARE IN INCHES.
 TOLERANCES: ANGLES = ± .5° .XXX = ± .010
 .X = ± .1 X = ± 1/16
 .XX = ± .03 X

DO NOT SCALE DRAWING

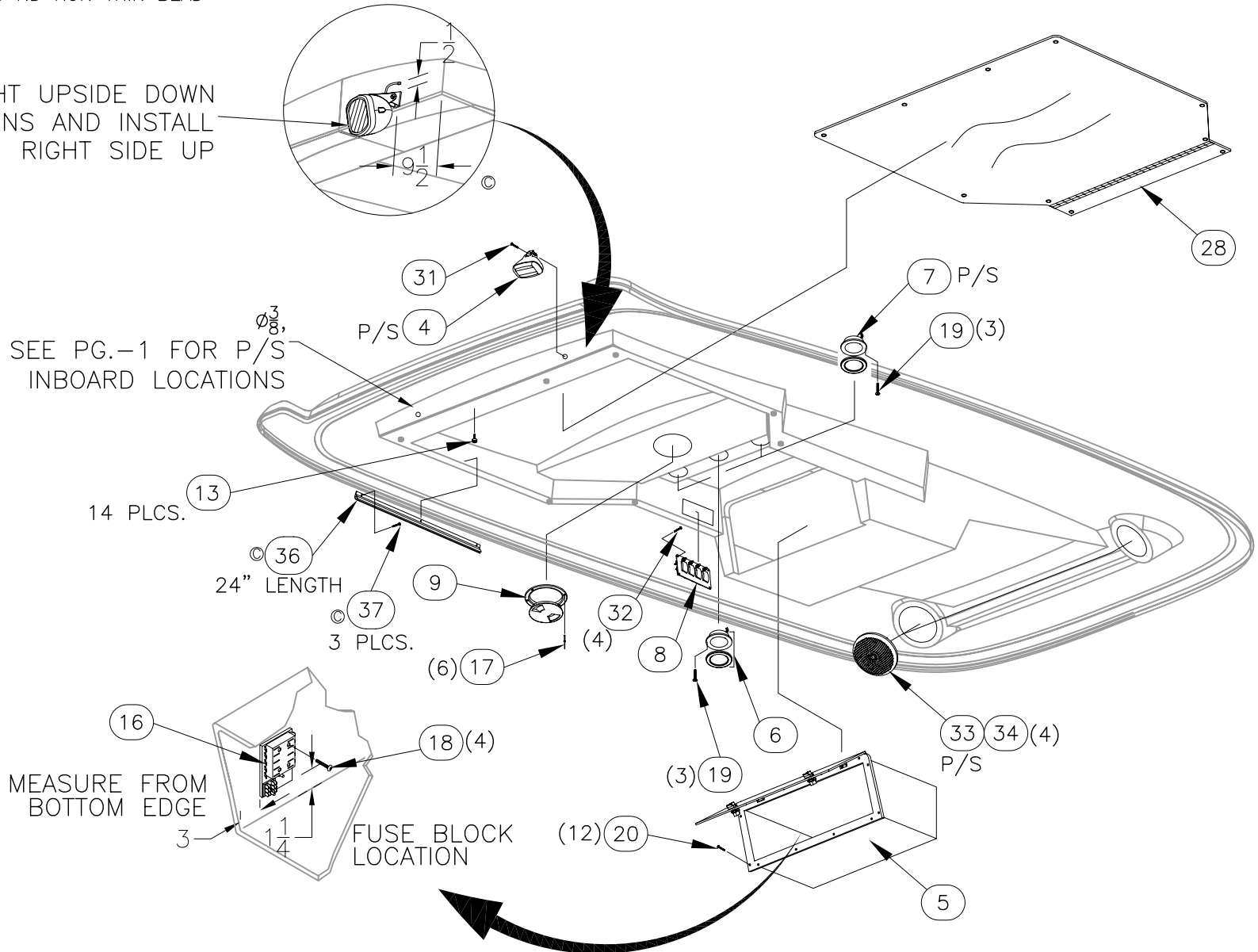


CHECKED: RA	DATE: 3/17/05	DRAWN: JMANAS	DATE: 03/02/05	SCALE: NONE	BOAT MODEL 320CD	MOLD NO.
APPD: KR	DATE: 3/17/05	DWG. TITLE: HARDTOP ASSEMBLY			INIT. REL. ECN NO: 040914	DWG. NO: 08401
DESIGN: VPK	DATE: 3/17/05				SHT. NO. 1 of 6	
INT. ENG: MG	DATE: 05/17/05					

NOTES:

1. DO NOT CAULK GAP AT E-BOX TO FRAME.
2. SEAL MOUNTING HOLES AND RUN THIN BEAD ON E-BOX FRAME

INSTALL LIGHT UPSIDE DOWN
5. REMOVE LENS AND INSTALL RIGHT SIDE UP



SEE PG.-1 FOR P/S INBOARD LOCATIONS

14 PLCS.

24" LENGTH

3 PLCS.

MEASURE FROM BOTTOM EDGE

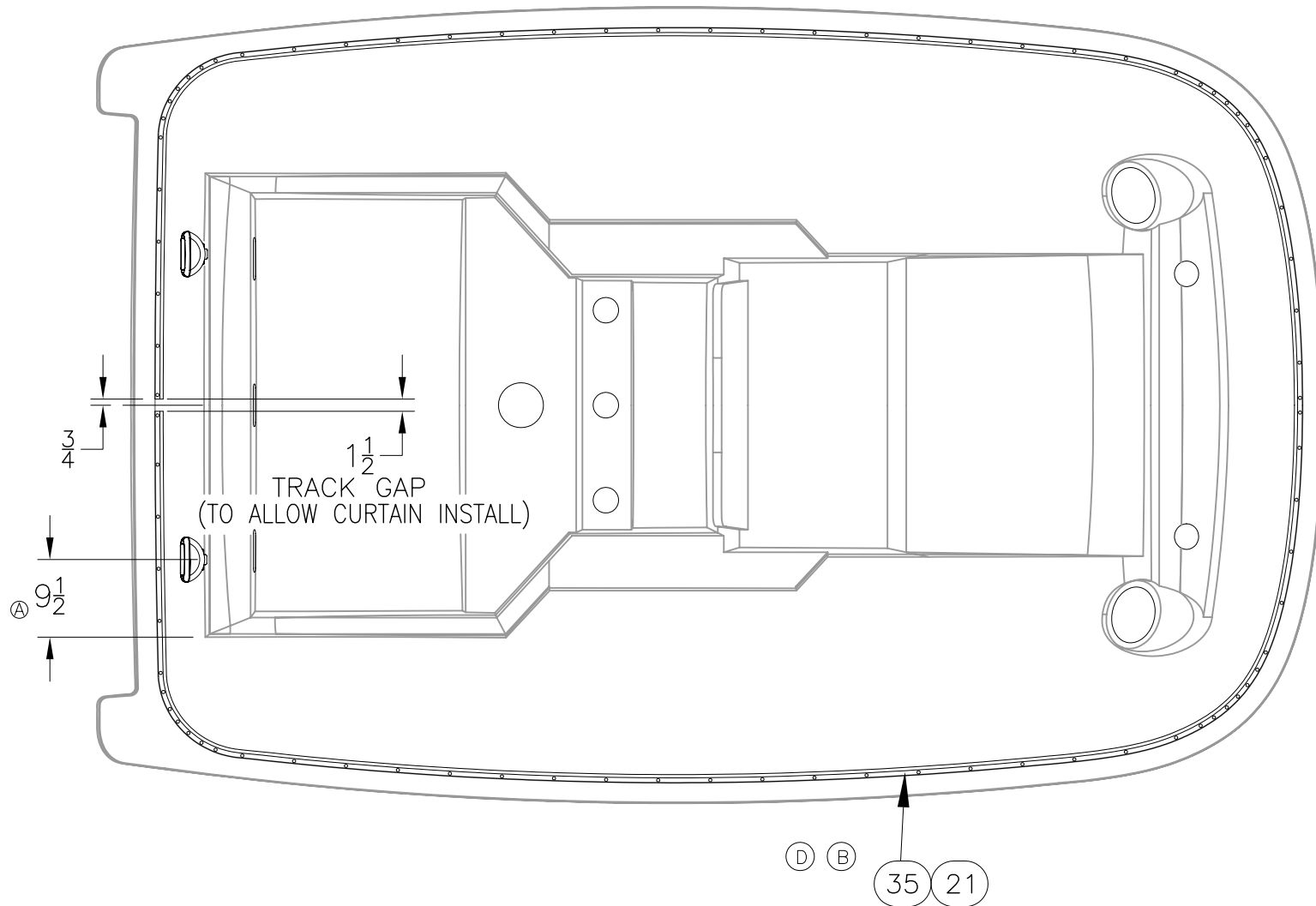
FUSE BLOCK LOCATION

THIS DOCUMENT IS THE PROPERTY OF BOSTON WHALER, INC. MFG. DEPT., EDGEWATER, FLORIDA. ALL RIGHTS ARE RESERVED. THIS DOCUMENT AND INFORMATION CONTAINED MUST NOT BE COPIED OR DISCLOSED TO OTHERS WITHOUT WRITTEN PERMISSION OF BOSTON WHALER, INC.

DWG. NO:
08401

REV.
1

CURRENT ECD
060208

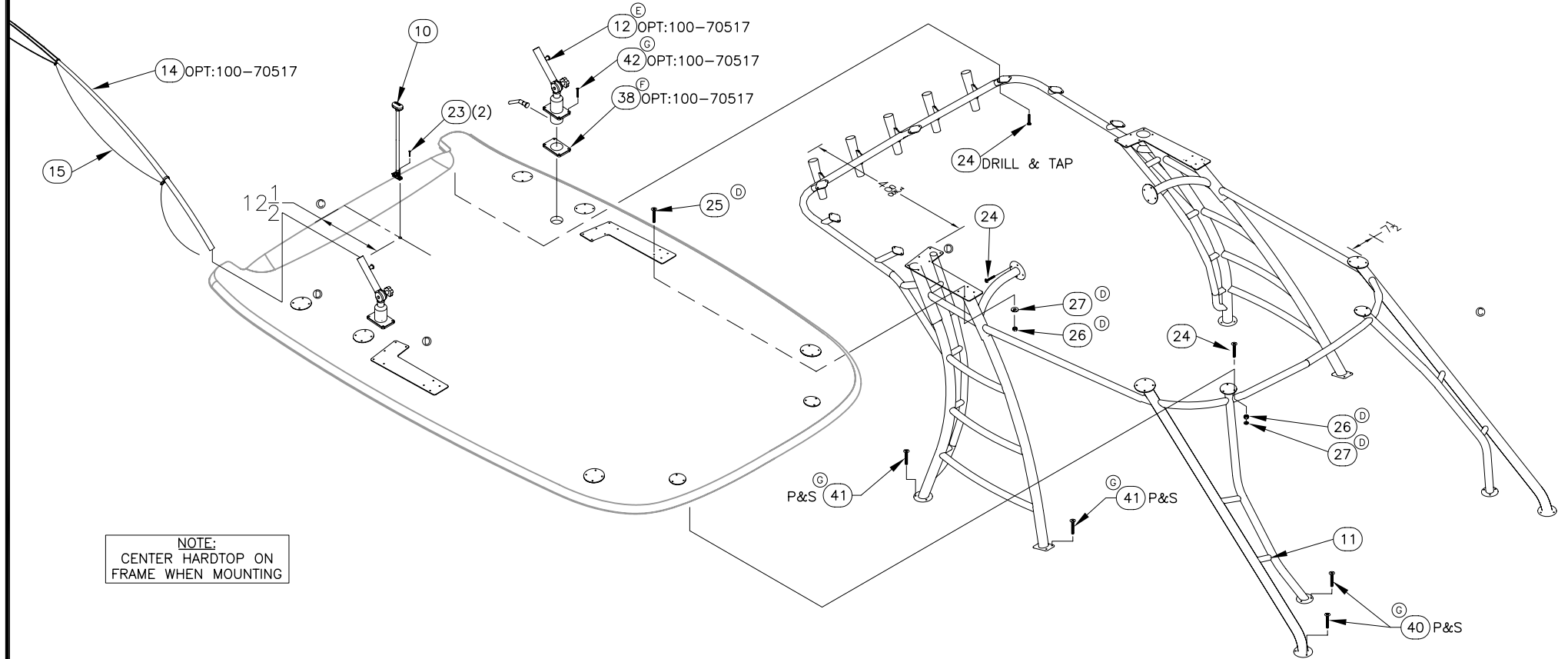


THIS DOCUMENT IS THE PROPERTY OF BOSTON WHALER, INC. MFG. DEPT., EDGEWATER, FLORIDA. ALL RIGHTS ARE RESERVED. THIS DOCUMENT AND INFORMATION CONTAINED MUST NOT BE COPIED OR DISCLOSED TO OTHERS WITHOUT WRITTEN PERMISSION OF BOSTON WHALER, INC.

DWG. NO:
08401

REV.
1

CURRENT ECD
060208



NOTE:
CENTER HARDTOP ON
FRAME WHEN MOUNTING



INTERPRET DIMENSIONS AND TOLERANCES PER ANSI Y 14.5 UNLESS OTHERWISE SPECIFIED DIMENSIONS ARE IN INCHES.
TOLERANCES: ANGLES = ± .5° .XXX = ± .010
.X = ± .1 .XX = ± .03 X = ± 1/16
DO NOT SCALE DRAWING

DRAWN: JMANAS

DATE: 03/02/05

SCALE: NONE

BOAT MODEL

MOLD NO.

320CD

DWG. TITLE:

HARDTOP ASSEMBLY

INIT. REL. ECN NO:

DWG. NO:

SHT. NO.

040914

08401

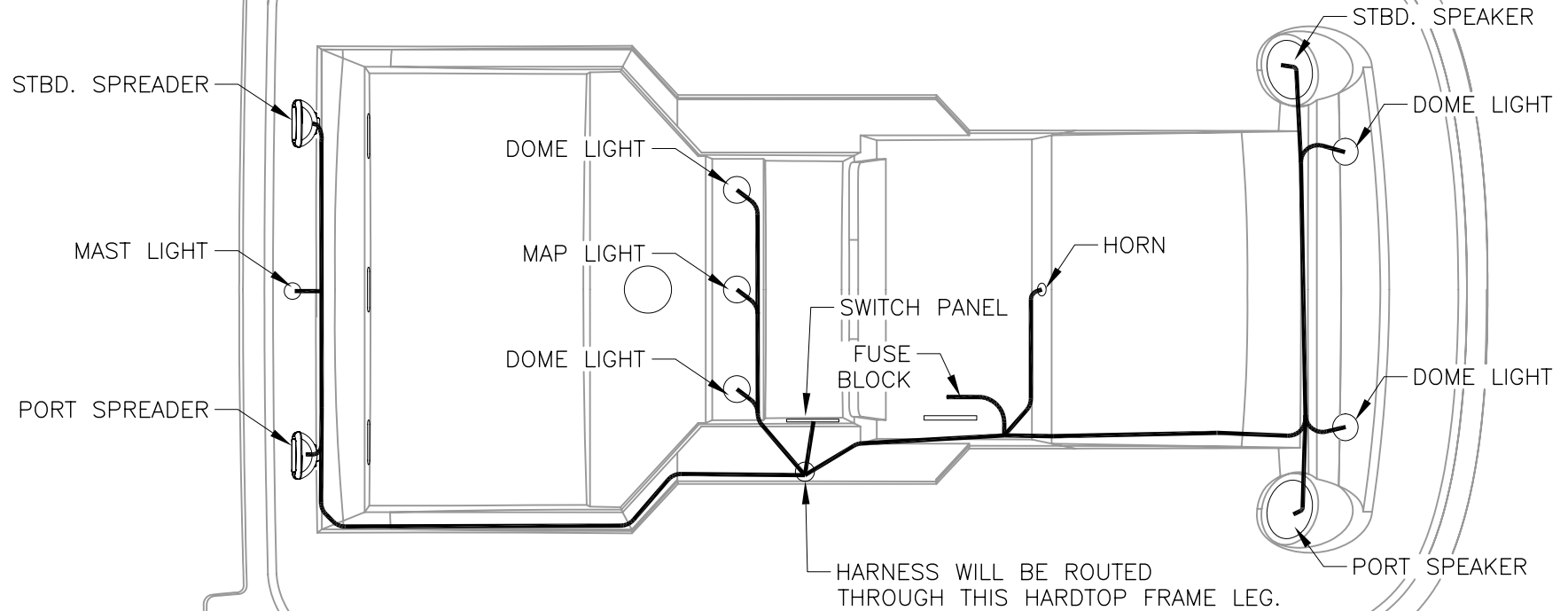
4 OF 6

THIS DOCUMENT IS THE PROPERTY OF BOSTON WHALER, INC. MFG. DEPT., EDGEWATER, FLORIDA. ALL RIGHTS ARE RESERVED. THIS DOCUMENT AND INFORMATION CONTAINED MUST NOT BE COPIED OR DISCLOSED TO OTHERS WITHOUT WRITTEN PERMISSION OF BOSTON WHALER, INC.

DWG. NO:
08401

REV.
1

CURRENT ECD
060208



VIEW ON UNDERSIDE

T-TOP HARNESS ROUTING DIAGRAM



INTERPRET DIMENSIONS AND TOLERANCES PER ANSI Y 14.5 UNLESS OTHERWISE SPECIFIED DIMENSIONS ARE IN INCHES.
 TOLERANCES: ANGLES = ± .5° .XXX = ± .010
 .X = ± .1 X = ± 1/16
 .XX = ± .03
 DO NOT SCALE DRAWING

DRAWN: JMANAS

DATE: 03/02/05

SCALE: NONE

BOAT MODEL

MOLD NO.

320CD

DWG. TITLE:

HARDTOP ASSEMBLY

INIT. REL. ECN NO:

040914

DWG. NO:

08401

SHT. NO.

5 of 6

THIS DOCUMENT IS THE PROPERTY OF BOSTON WHALER, INC. MFG. DEPT.
 EDGEWATER, FLORIDA. ALL RIGHTS ARE RESERVED. THIS DOCUMENT AND
 INFORMATION CONTAINED MUST NOT BE COPIED OR DISCLOSED TO OTHERS
 WITHOUT WRITTEN PERMISSION OF BOSTON WHALER, INC.

DWG. NO:
 08401

REV.
 I

CURRENT ECD
 060208

PARTS LIST

ITEM	QTY.	U/M	DESCRIPTION	B.W.I. NO.
①	1	EA.	FBRGLS PART, BW320CD-06 HARDTOP CMLPT	1806430
2	1	EA.	HORN, SGL BLK NO CONN SERIES 84400-1	1780938
3	1	EA.	HORN, GRILL SGL SS OVERLAY SERIES 84400-1	1781252
4	2	EA.	LIGHT, HALOGEN 12V FLOOD 55W BLK	1690119
5	1	EA.	COVER, HDPE BW3200R-03 ELEC W/BOX	1746111
6	1	EA.	LIGHT, DIANA 105 ROUND W/RED SOFT LENS CHR	1471762
7	4	EA.	LIGHT, DIANA 105 ROUND W/FRSTD LENS	1488261
8	1	EA.	PANEL, BW3200R-04 SW H/T	1754927
9	1	EA.	ACCESS PLATE, POLYPROP TWIST-OUT 5" WHT BWI	1016153
10	1	EA.	LIGHT, NAV A/R 24"VERT MNT FOLDING	1751342
11	1	EA.	FRAME, BW320CD-05 H/T BRUSHED FINISH	1797590
②	1	EA.	OUTRIGGERS, GRAND SLAM - TOP MNT ADJ '06	1806617
13	10	EA.	SNAP STUD, W/#8 X 3/8" PH BR/NI/SS	0203786
14	1	EA.	OUTRIGGERS, TELESCOPING 15'SILV/SILV W/BAG	1775383
15	1	EA.	OUTRIGGERS, RIGGING KIT PREMIUM BLK CORD	1683760
16	1	EA.	FUSE BLOCK, 10-GNG BLADE-TYPE W/BLANK LABELS	1688102
17	6	EA.	RIVET, POP/BLIND #3/16 X 5/8" ALUM	0189415
18	4	EA.	SCREW, TAPPING #8A X 1.25" PTH SC	1130053
③	19	EA.	SCREW, TAPPING #4A X 1/2" PFH SC	1010347
20	12	EA.	SCREW, TAPPING #8A X 1.5" POH SC	1255462
21	86	EA.	SCREW, TAPPING #6A X 3/4" PFH SC	1010370
④	22	EA.	SCREW, TAPPING #10A X 3/4" PPH SC	1172030
23	2	EA.	SCREW, TAPPING #10A X 3/4" PTH SC	1008762
24	18	EA.	SCREW, MACHINE #1/4-20 X 1" PPH SC	1008580
⑤	25	EA.	SCREW, MACHINE #1/4-20 X 2.5" PPH SC	1010594
⑥	26	EA.	NUT, ACORN #1/4-20 SC	1357813
⑦	27	EA.	WASHER, LOCK/SPLIT 1/4" SC	1260595
28	1	EA.	CANVAS, BW3200R-03 H/T STRG BAG BLK	1747571
29	3	EA.	COVER, ABS BW-03 2.25"X 6.25" WHT	1754487
30	12	EA.	SCREW, TAPPING #6A X 1/2" PTH SC	1008796
31	2	EA.	BOLT, CARRIAGE #5/16 X 1.5" SC	1755436
32	4	EA.	SCREW, TAPPING #8A X 1/2" PTH SC	1008812
33	2	EA.	SPEAKER, COAXIAL 6.5" W/WHT CVR	1690555
34	8	EA.	SCREW, TAPPING #10A X 1" PTH SC	1008739
⑧	35	EA.	TRACK, PVC RIGID 10' WHT	1617398
⑨	36	FT	CANVAS, BW-00 SLIDE TRACK HARDTOP VINYL WHT	1357730
⑩	37	EA.	SCREW, TAPPING #8A X 5/8" PTH SC	1010925
⑪	38	EA.	PLATE, BACKING GRAND SLAM OUTRIGGER ALUM PR	1773916
⑫	39	EA.	COVER, ABS BW-05 TAPERED WHT	1804201
⑬	40	EA.	SCREW, MACHINE #5/16-18 X 3" PPH SC	1806803
⑭	41	EA.	SCREW, MACHINE #5/16-18 X 3.5" PPH SC	1809734
⑮	42	EA.	SCREW, MACHINE #1/4-20 X 3" PPH SC	1008622

MOLD NO.

BOAT MODEL
 320CD

SCALE: NONE

DATE: 03/02/05

DRAWN: JMANAS
 DWG. TITLE:
 HARDTOP ASSEMBLY

INTERPRET DIMENSIONS AND TOLERANCES PER ANSI Y 14.5
 UNLESS OTHERWISE SPECIFIED DIMENSIONS ARE IN INCHES.
 TOLERANCES: ANGLES = ± .5°
 .X = ± .1
 .XX = ± .03
 X = ± 1/16
 X = ± .010

DO NOT SCALE DRAWING

SHT. NO.
 6 of 6

DWG. NO.
 08401

INIT. REL. ECD NO.
 040914

